

ROBER TWO ARRIVAL

NE-2, 11 JUL 2024 to 08 AUG 2024

ARRIVAL ROUTE DESCRIPTION

KENNEBUNK TRANSITION (ENE.ROBER2): From over ENE VORTAC, via ENE R-217 to ASPEN INT, then via PVD R-033 direct PVD VOR/DME, then via PVD R-234 and HTO R-052 to TRAIT INT, then via HTO R-052 to PARCH INT. Thence....

SANDY POINT TRANSITION (SEY.ROBER2): From over SEY VOR/DME via SEY R-276 to PARCH INT. Thence....

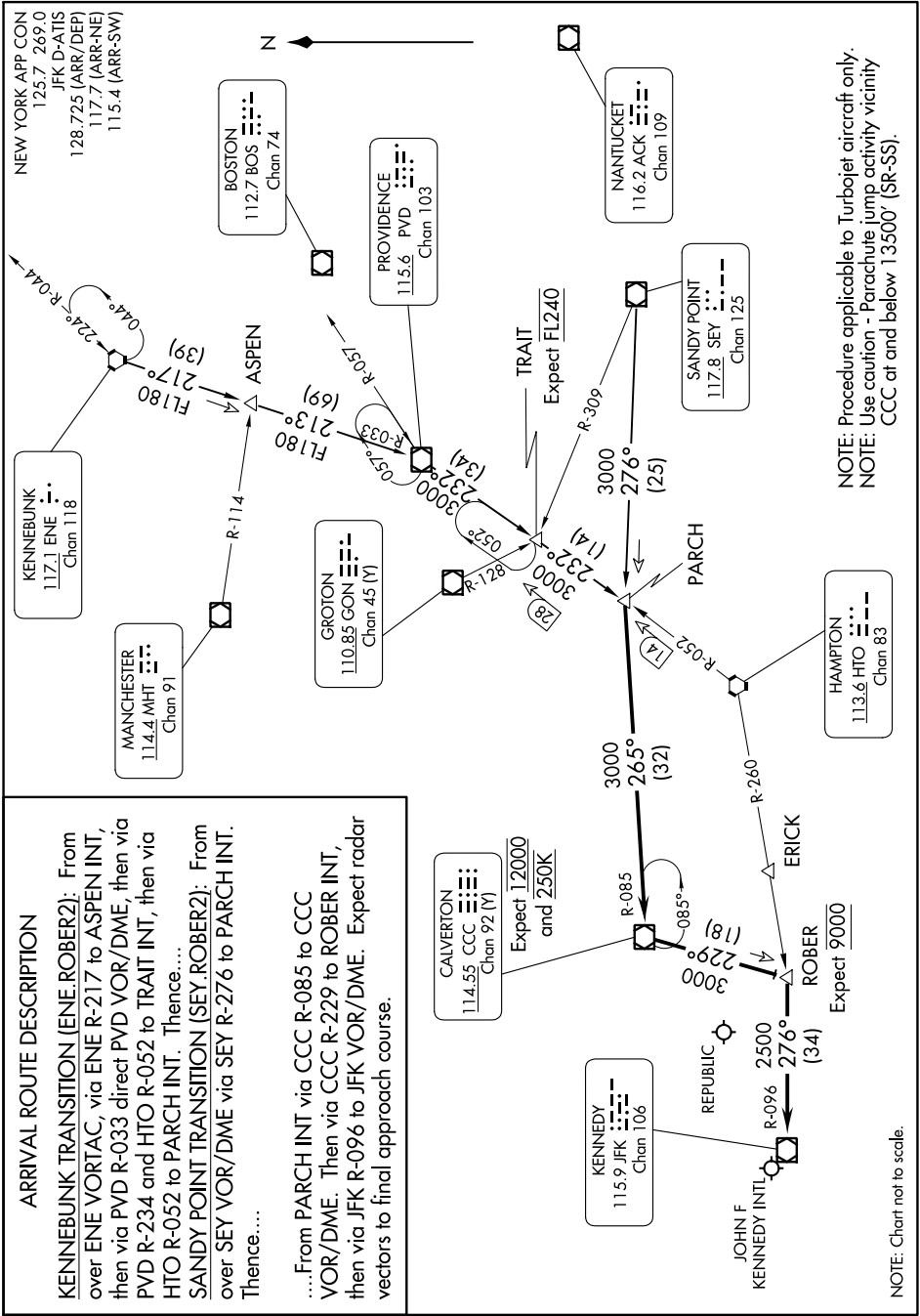
....From PARCH INT via CCC R-085 to CCC VOR/DME. Then via CCC R-229 to ROBER INT, then via JFK R-096 to JFK VOR/DME. Expect radar vectors to final approach course.

CALVERTON
114.55 CCC
Chan 92 (Y)
Expect 12000
and 250K

KENNEBUNK
115.9 JFK
Chan 106

JOHN F
KENNEDY INTL
R-096
2500
276°
(34)

ROBER
Expect 9000



NOTE: Procedure applicable to Turbojet aircraft only.
NOTE: Use caution - Parachute jump activity vicinity CCC at and below 13500' (SR-SS).

NOTE: Chart not to scale.

NE-2, 11 JUL 2024 to 08 AUG 2024

ROBER TWO ARRIVAL