


LOM IA	APP CRS	Rwy ldg	9129
329	280°	TDZE	588
		Apt Elev	592

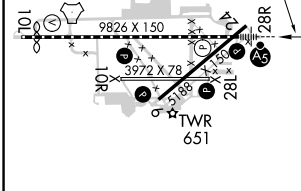
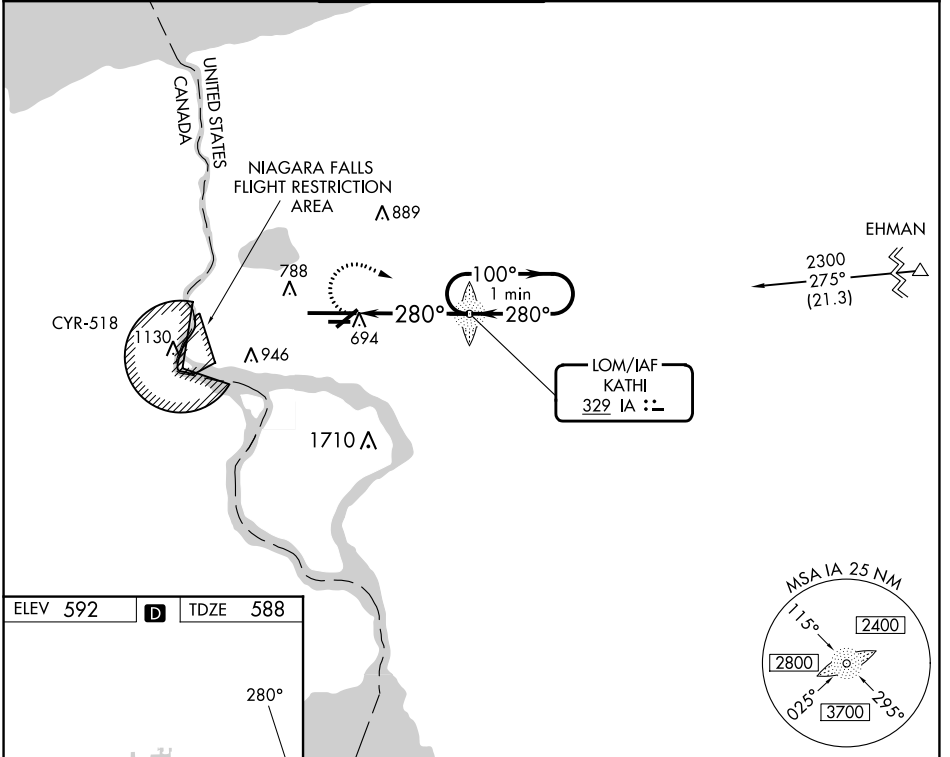
# NDB RWY 28R

NIAGARA FALLS INTL (IAG)

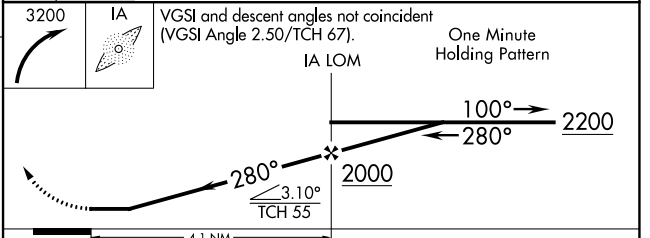
**⚠** When local altimeter setting not received, use Buffalo Niagara Intl altimeter setting and increase all MDA 60 feet, increase S-28R Cat C and D visibility 1/4 SM and Circling Cat C and D 1/4 SM. For inop MALSRR, increase S-28R Cats A/B visibility to RVR 5500 and Cats C/D visibility to 1 1/2. For inop MALSRR when using Buffalo Niagara Intl altimeter setting, increase S-28R Cats C/D visibility to 1 1/2. Rwy 28R helicopter visibility reduction below 1/4 SM NA. Circling Rwy 6, 10R, 24, 28L NA at night.

**MALSRR**  
  
**MISSED APPROACH:**  
 Climbing right turn to 3200 direct KATHI LOM and hold, continue climb-in-hold to 3200.

ATIS	BUFFALO APP CON	NIAGARA TOWER★	GND CON	CLNC DEL	UNICOM
120.8 269.4	126.5 317.6	118.5 (CTAF) 349.0	125.3 275.8	119.25 251.1	122.95



ELEV	592	TDZE	588
<b>D</b>			
TDZ/CL Rwy 28R REIL Rws 6, 10R, 24, and 28L HIRL Rwy 10L-28R MIRL Rws 6-24 and 10R-28L			
FAF to MAP 4.1 NM			
Knots	60	90	120 150 180
Min:Sec	4:06	2:44	2:03 1:38 1:22



CATEGORY	A	B	C	D
S-28R	1200/40	612 (700-3/4)	1200-1 3/8	612 (700-1 3/8)
<b>C</b> CIRCLING	1200-1	608 (700-1)	1280-2 688 (700-2)	1280-2 1/4 688 (700-2 1/4)

NE-2, 11 JUL 2024 to 08 AUG 2024

NE-2, 11 JUL 2024 to 08 AUG 2024