

LOC/DME I-BDR 110.7 Chan 44	APP CRS 060°	Rwy Idg 4677
		TDZE 7
		Apt Elev 9

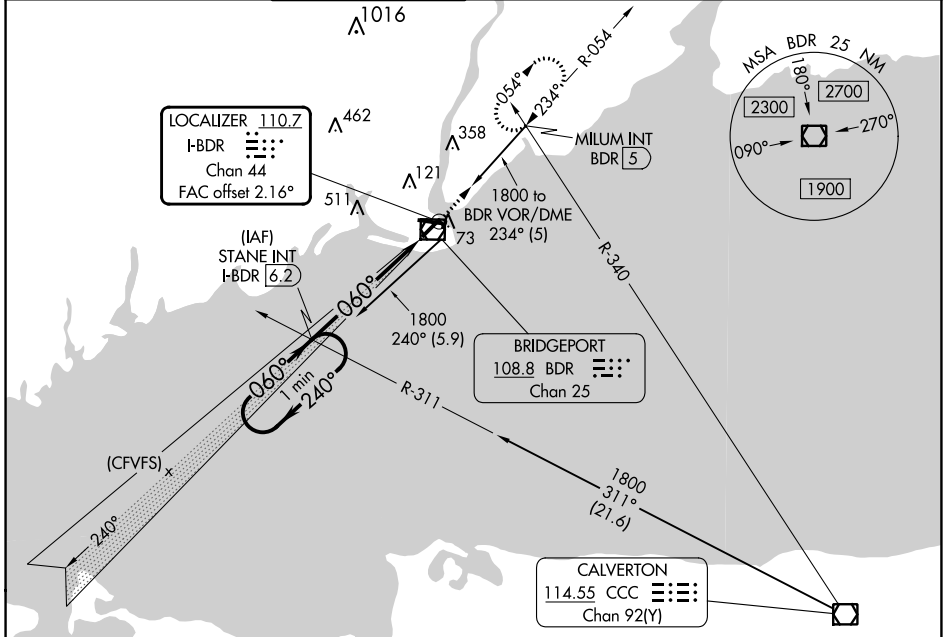
ILS or LOC RWY 6

BRIDGEPORT/SIKORSKY (BDR)

Autopilot coupled approach NA below 350.
⚠ Circling Rwy 11, 29 NA at night.
Rwy 6 helicopter visibility reduction below ¾ SM NA.

MISSED APPROACH: Climb to 1800 on the BDR VOR/DME R-054 to MILUM INT and hold.

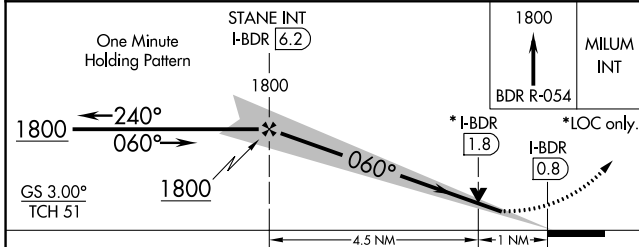
ATIS 119.15	NEW YORK APP CON 124.075 343.65	BRIDGEPORT TOWER* 120.9 (CTAF) 257.8	GND CON 121.75 257.8	CLNC DEL 121.75	CLNC DEL 124.075 (When twr closed)	UNICOM 123.0
-----------------------	---	---	--------------------------------	---------------------------	---	------------------------



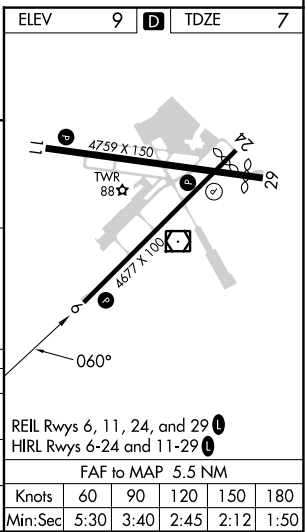
NE-1, 11 JUL 2024 to 08 AUG 2024

NE-1, 11 JUL 2024 to 08 AUG 2024

ELEV	9	TDZE	7
------	---	------	---



CATEGORY	A	B	C	D
S-ILS 6		257-¾	250 (300-¾)	
S-LOC 6		380-1	373 (400-1)	
CIRCLING	480-1 471 (500-1)	620-1 611 (700-1)	820-2½ 811 (900-2½)	820-2¾ 811 (900-2¾)



REIL Rwys 6, 11, 24, and 29
 HIRL Rwys 6-24 and 11-29

FAF to MAP 5.5 NM

Knots	60	90	120	150	180
Min:Sec	5:30	3:40	2:45	2:12	1:50