

WAAS CH 42807 W31B	APP CRS 309°	Rwy Idg 7202 TDZE 593 Apt Elev 612
--	------------------------	---

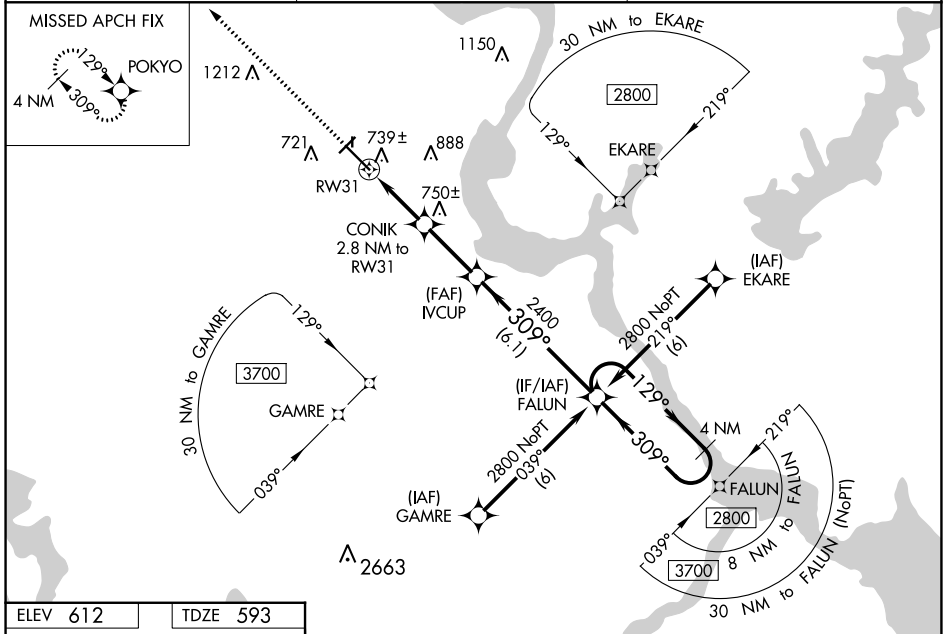
RNAV (GPS) RWY 31

MUSKOGEE-DAVIS RGNL (MKO)

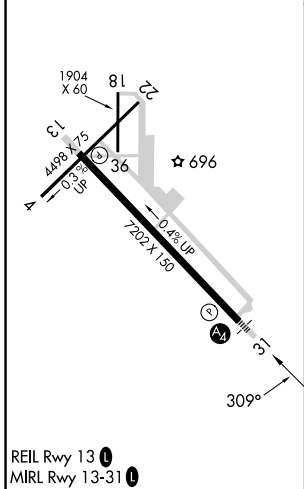
⚠ For uncompensated Baro-VNAV systems, procedure NA below -16°C (4°F) or above 47°C (116°F). Baro-VNAV and VDP NA when using Tahlequah altimeter setting. When local altimeter setting not received, use Tahlequah altimeter setting: increase LPV DA to 934, LNAV/VNAV DA to 1230, and visibility LPV and LNAV/VNAV all Cats ¼ SM; increase all MDA 100 feet and visibility LNAV Cat C/D/E and Circling Cat C ¼ SM, and Circling Cat D ½ SM. Inop table does not apply to LNAV/VNAV Cat A/B/C and LNAV Cat C. Circling Rwy 4, 18, 22, 36 NA at night. Rwy 4, 18, 22, 36 helicopter visibility reduction below 1 SM NA.

MALS MISSED APPROACH: Climb to 2900 direct POKYO and hold.

ASOS 135.025	FORT WORTH CENTER 132.2 338.35	UNICOM 122.8 (CTAF) 0
------------------------	--	---------------------------------



ELEV 612	TDZE 593
-----------------	-----------------



2900 POKYO					
*LNAV only.					
CONIK 2.8 NM to RW31					
IVCUP					
FALUN					
4 NM Holding Pattern					
2800					
GP 3.00° TCH 53					
1.2	1.6 NM	2.7 NM	6.1 NM		
CATEGORY	A	B	C	D	E
LPV DA	843-1		250 (300-1)		
LNAV/VNAV DA	1139-2		546 (600-2)		
LNAV MDA	1000-¾	407 (400-¾)	1000-¼	407 (400-¼)	1000-½
	528 (600-1)	568 (600-1)	708 (800-2)	788 (800-2½)	968 (1000-3)
CIRCLING	1140-1	1180-1	1320-2	1400-2½	1580-3
	528 (600-1)	568 (600-1)	708 (800-2)	788 (800-2½)	968 (1000-3)

SC-1, 11 JUL 2024 to 08 AUG 2024

SC-1, 11 JUL 2024 to 08 AUG 2024