

NEW ORLEANS, LOUISIANA

RNAV (GPS) RWY 14

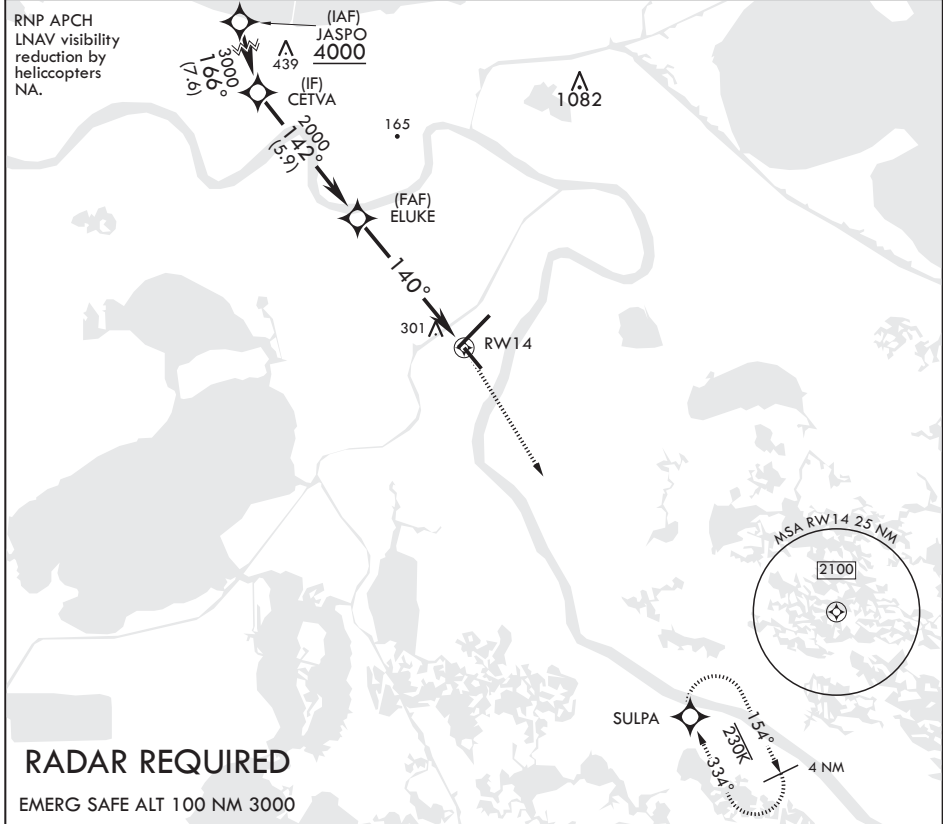
APCH CRS	Rwy Idg	6000
140°	TDZE	2
	Arprt Elev	2

AL-630 (USN)

NEW ORLEANS NAS JRB (ALVIN CALLENDER FLD) (KNBG)

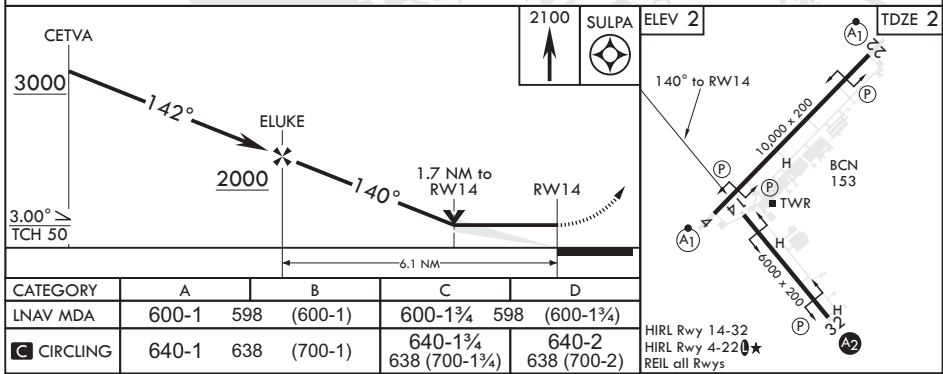
		MISSED APPROACH: Climbing right turn to 2100 direct SULPA and hold.			
--	--	---	--	--	--

ATIS*	APP CON/DEP CON	NAVY NEW ORLEANS TOWER*	GND CON	CLNC DEL	ASR/PAR
279.55	123.85 256.9	123.8 0* 340.2 (CTAF)	121.6 270.35	128.35 263.0	



SC-4, 11 JUL 2024 to 08 AUG 2024

SC-4, 11 JUL 2024 to 08 AUG 2024



CATEGORY	A		B		C		D	
LNVA MDA	600-1	598	(600-1)		600-1 $\frac{1}{4}$	598	(600-1 $\frac{1}{4}$)	
CIRCLING	640-1	638	(700-1)		640-1 $\frac{1}{4}$	638	(700-1 $\frac{1}{4}$)	

HIRL Rwy 14-32
 HIRL Rwy 4-22 0*
 REIL all Rwys

NEW ORLEANS, LOUISIANA

29°50'N - 90°02'W NEW ORLEANS NAS JRB (ALVIN CALLENDER FLD) (KNBG)

Amdt 2 04NOV21

RNAV (GPS) RWY 14