

NEW ORLEANS, LOUISIANA

RNAV (GPS) RWY 4

APCH CRS 044°	Rwy Idg TDZE Arprt Elev	10,000 -2 2
-------------------------	-------------------------------	--------------------------

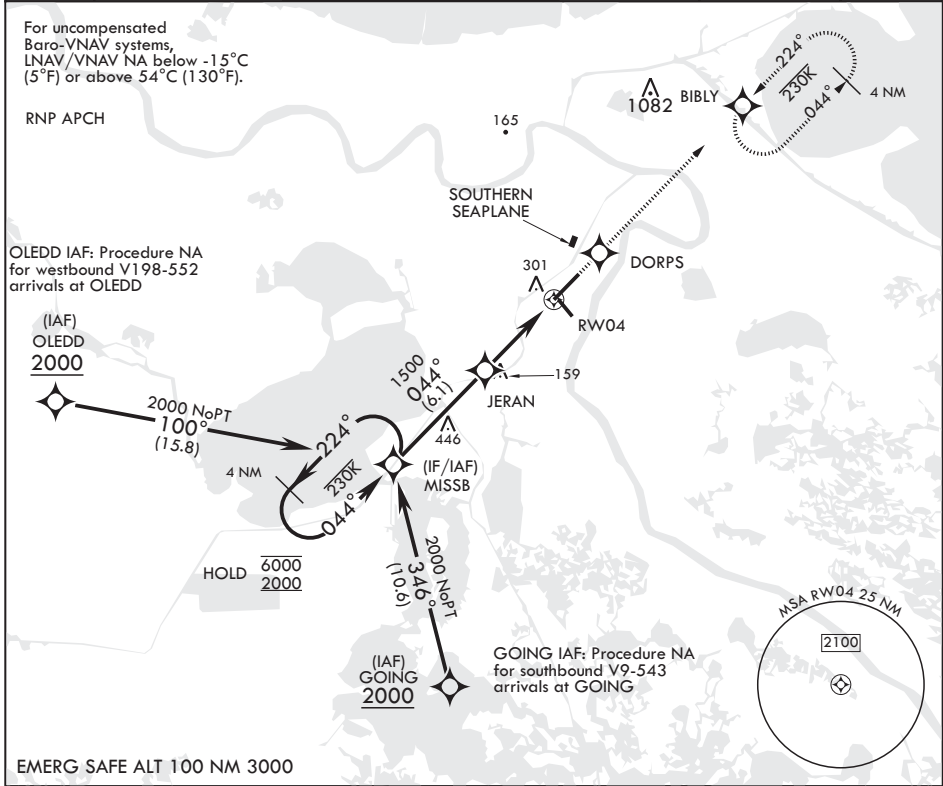
AL-630 (USN)

NEW ORLEANS NAS JRB (ALVIN CALLENDER FLD) (KNBG)

V * When ALS inop, increase vis to 1 1/8 miles.
** When ALS inop, increase CAT AB vis to 1 mile; CAT CD vis to 1 1/8 miles.

ALSF-1 MISSED APPROACH: Climb to 2100 direct DORPS, track 044° to BIBLY and hold.

ATIS* 279.55	APP CON/DEP CON 123.85 256.9	NAVY NEW ORLEANS TOWER* 123.8 0* 340.2 (CTAF)	GND CON 121.6 270.35	CLNC DEL 128.35 263.0	ASR/PAR
------------------------	--	---	--------------------------------	---------------------------------	---------



6000 2000	← 224°	MISSB	044°	→	2000	1500	JERAN	1 NM to RWY04	RWY04	2100	DORPS	tr 044°	BIBLY	ELEV 2	TDZE -2
GP 3.00° TCH 52								4.6 NM							
CATEGORY	A	B	C	D											
LNAV/VNAV DA*	379-5/8				381	(400-5/8)									
LNAV MDA**	380-1/2	382 (400-1/2)	380-5/8	382 (400-5/8)											
CI RCLING	640-1	638 (700-1)	640-1 1/4	638 (700-1 1/4)	640-2	638 (700-2)									

HIRL Rwy 14-32
HIRL Rwy 4-22 0*
REIL all Rwys

NEW ORLEANS, LOUISIANA

29°50'N - 90°02'W NEW ORLEANS NAS JRB (ALVIN CALLENDER FLD) (KNBG)

Amdt 5 04NOV21

RNAV (GPS) RWY 4

SC-4, 11 JUL 2024 to 08 AUG 2024

SC-4, 11 JUL 2024 to 08 AUG 2024