

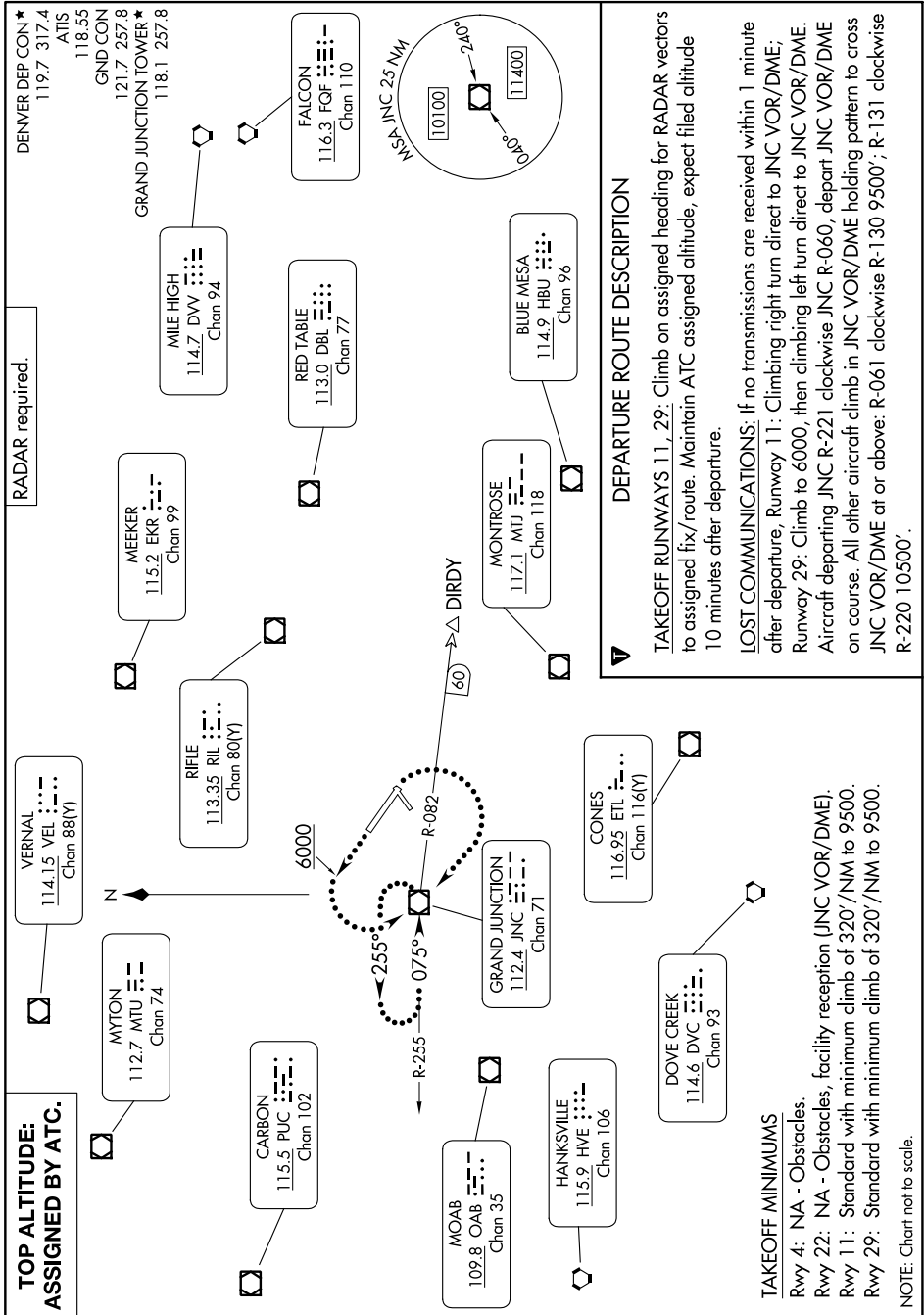
GRAND MESA TWO DEPARTURE

AL-634 (FAA)

GRAND JUNCTION RGNL (GJT)

GRAND JUNCTION, COLORADO

SW-1, 11 JUL 2024 to 08 AUG 2024



GRAND MESA TWO DEPARTURE

GRAND JUNCTION, COLORADO

GRAND JUNCTION RGNL (GJT)

SW-1, 11 JUL 2024 to 08 AUG 2024

DEPARTURE ROUTE DESCRIPTION

TAKEOFF RUNWAYS 11, 29: Climb on assigned heading for RADAR vectors to assigned fix/route. Maintain ATC assigned altitude, expect filed altitude 10 minutes after departure.

LOST COMMUNICATIONS: If no transmissions are received within 1 minute after departure, Runway 11: Climbing right turn direct to JNC VOR/DME; Runway 29: Climb to 6000, then climbing left turn direct to JNC VOR/DME. Aircraft departing JNC R-221 clockwise JNC R-060, depart JNC VOR/DME on course. All other aircraft climb in JNC VOR/DME holding pattern to cross JNC VOR/DME at or above: R-061 clockwise R-130 9500'; R-131 clockwise R-220 10500'.

TAKEOFF MINIMUMS

- Rwy 4: NA - Obstacles.
- Rwy 22: NA - Obstacles, facility reception (JNC VOR/DME).
- Rwy 11: Standard with minimum climb of 320'/NM to 9500.
- Rwy 29: Standard with minimum climb of 320'/NM to 9500.

NOTE: Chart not to scale.