

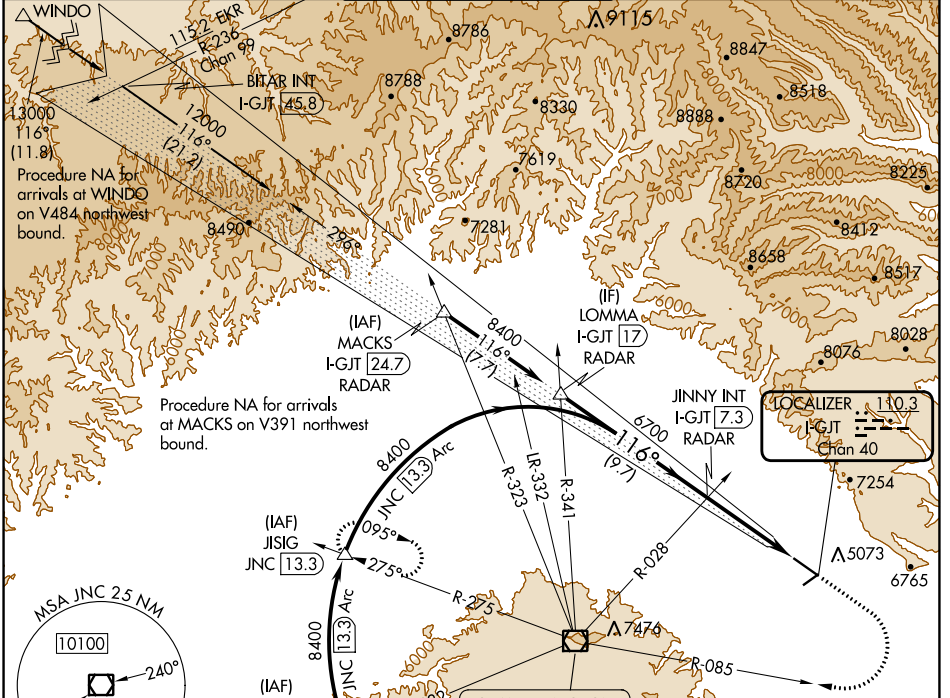
LOC/DME I-GJT 110.3 Chan 40	APP CRS 116°	Rwy Idg TDZE Apt Elev	9339 4840 4861
--	------------------------	-----------------------------	---

ILS or LOC RWY 11

GRAND JUNCTION RGNL (GJT)

<p>Circling NA for Cat D north of Rwy 11-29. Inop table does not apply to S-ILS 11 all Cats.</p>	<p>MALS F</p>	<p>MISSED APPROACH: Climb to 6700 then climbing right turn to 9000 on JNC VOR/DME R-085 to JNC VOR/DME then on JNC VOR/DME R-275 to JISIG/JNC 13.3 DME and hold.</p>

ATIS 118.55	DENVER APP CON * 119.7 317.4	GRAND JUNCTION TOWER * 118.1 (CTAF) 0 257.8	GND CON 121.7 257.8	UNICOM 122.95
-----------------------	--	---	-------------------------------	-------------------------



LOMMA I-GJT 17 RADAR	JINNY INT I-GJT 7.3 RADAR	JNC R-085	JNC R-275	JISIG
8400	6700	9000	6700	6700
GS 3.00° TCH 51	6700	Use I-GJT DME when on localizer course.	I-GJT 3	I-GJT 1.6

CATEGORY	A	B	C	D
S-ILS 11	5040/40 200 (200-¾)			
S-LOC 11	5340/40 500 (500-¾)		5340/60 500 (500-1¼)	
CIRCLING	5380-1 519 (600-1)	5520-1 659 (700-1)	5840-3 979 (1000-3)	

HIRL Rwy 11-29					
MIRL Rwy 4-22					
REIL Rwys 4, 22 and 29					
FAF to MAP 5.7 NM					
Knots	60	90	120	150	180
Min:Sec	5:42	3:48	2:51	2:17	1:54

SW-1, 11 JUL 2024 to 08 AUG 2024

SW-1, 11 JUL 2024 to 08 AUG 2024