

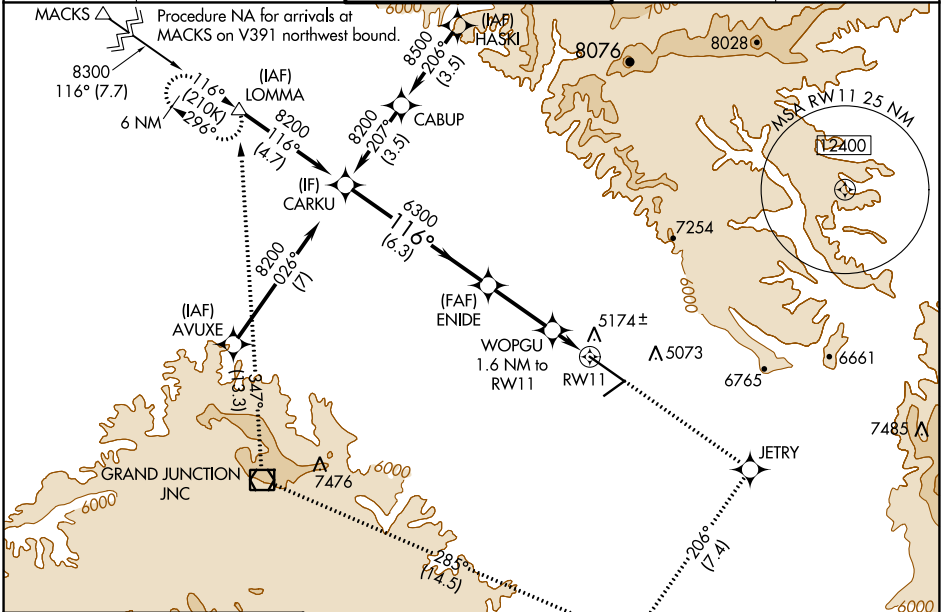
WAAS CH 97514 W11A	APP CRS 116°	Rwy Idg TDZE Apt Elev	9339 4840 4861
--	------------------------	-----------------------------	---

RNAV (GPS) Y RWY 11

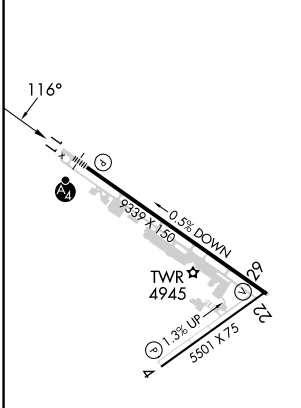
GRAND JUNCTION RGNL (GJT)

RNP APCH - GPS.		MALSF		MISSED APPROACH: Climb to 6700 direct JETRY then climbing right turn to 9000 on track 206° to AYEDY and track 285° to JNC VOR/DME and track 347° to LOMMA and hold. *Missed approach requires minimum climb of 206 feet per NM to 7740.	
<p>⚠ Circling NA for Cat D north of Rwy 11-29. For uncompensated Baro-VNAV systems, LNAV/VNAV NA below -17°C or above 54°C. For inop ALS, increase LPV all Cats visibility to RVR 4500 and increase LNAV Cat C/D visibility to 1 1/2. Inop table does not apply to LPV*.</p>					

ATIS 118.55	DENVER APP CON * 119.7 317.4	GRAND JUNCTION TOWER * 118.1 (CTAF) 257.8	GND CON 121.7 257.8	UNICOM 122.95
-----------------------	--	---	-------------------------------	-------------------------



ELEV 4861	D	TDZE 4840
-----------	----------	-----------



HIRL Rwy 11-29
MIRL Rwy 4-22
REIL Rwy 4, 22 and 29

	CARKU	6700	JETRY	9000	AYEDY	JNC	LOMMA
	↑	◆	↷ tr 206°	△	tr 285°	tr 347°	△
	8200	6300	5400	5400	5400	5400	5400
	GP 3.00°						
	TCH 51						
	6.3 NM	2.8 NM	1.6 NM				
CATEGORY	A	B	C	D			
LPV DA*		5040/40	200 (200-3/4)				
LPV DA		5120/40	280 (300-3/4)				
LNAV/VNAV DA		5317/60	477 (500-1 1/4)				
LNAV MDA*	5280/40	440 (500-3/4)		5280/50	440 (500-1)		
LNAV MDA	5360/40	520 (500-3/4)		5360-1 1/4	520 (500-1 1/4)		
CIRCLING	5380-1 519 (600-1)	5520-1 659 (700-1)		5840-3	979 (1000-3)		

SW-1, 11 JUL 2024 to 08 AUG 2024

SW-1, 11 JUL 2024 to 08 AUG 2024