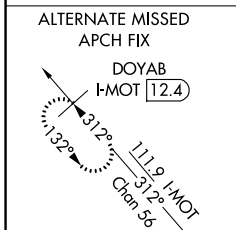
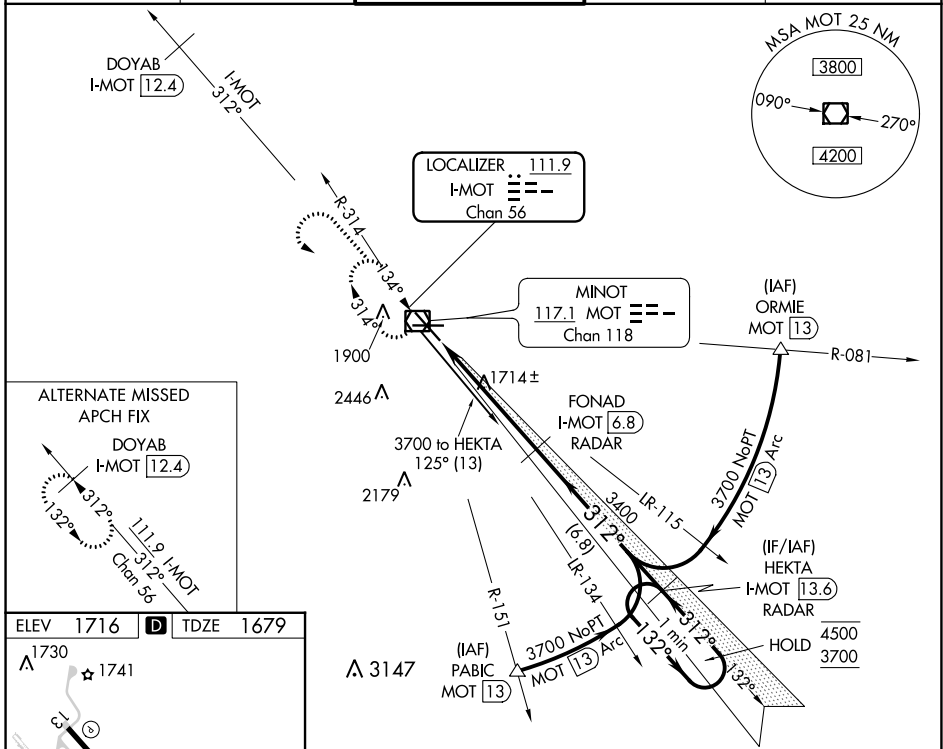


LOC/DME I-MOT 111.9 Chan 56	APP CRS 312°	Rwy Idg TDZE Apt Elev	7700 1679 1716
---	------------------------	-----------------------------	---

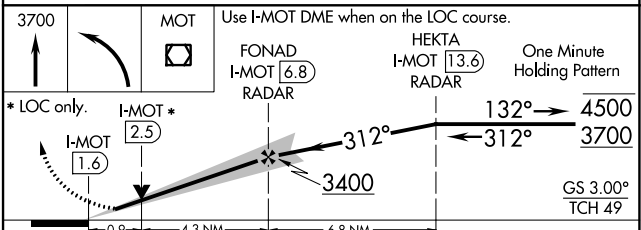
ILS or LOC RWY 31 MINOT INTL (MOT)

DME or RADAR required.	MALSR 	MISSED APPROACH: Climb to 3700 then left turn direct MOT VOR/DME and hold.
<p>▽ For Inop ALS, increase S-ILS 31 Cat E visibility to RVR 4000, and S-LOC 31 Cat C, D and E visibility to RVR 4500.</p> <p>△ Autopilot coupled approach NA below 2500.</p>		

ASOS 118.725	MINOT APP CON * 119.6 363.8	MAGIC CITY TOWER * 118.2 (CTAF) 251.125	GND CON 121.9	UNICOM 122.95
------------------------	---------------------------------------	---	-------------------------	-------------------------



ELEV 1716	D	TDZE 1679
 TWR 1784 312° 5.2 NM from FAF REIL Rwy 13 REIL Rws 8 and 26 HIRL Rws 8-26 and 13-31 FAF to MAP 5.2 NM Knots: 60, 90, 120, 150, 180 Min:Sec: 5:12, 3:28, 2:36, 2:05, 1:44		



CATEGORY	A	B	C	D	E
S-ILS 31	1879/24 200 (200-½)				
S-LOC 31	1980/24 301 (300-½)		1980/40 301 (300-¾)		
CIRCLING	2200-1 484 (500-1)	2240-1 524 (600-1)	2800-3 1084 (1100-3)		

MINOT INTL (MOT) ILS or LOC RWY 31

NC-1, 11 JUL 2024 to 08 AUG 2024

NC-1, 11 JUL 2024 to 08 AUG 2024