

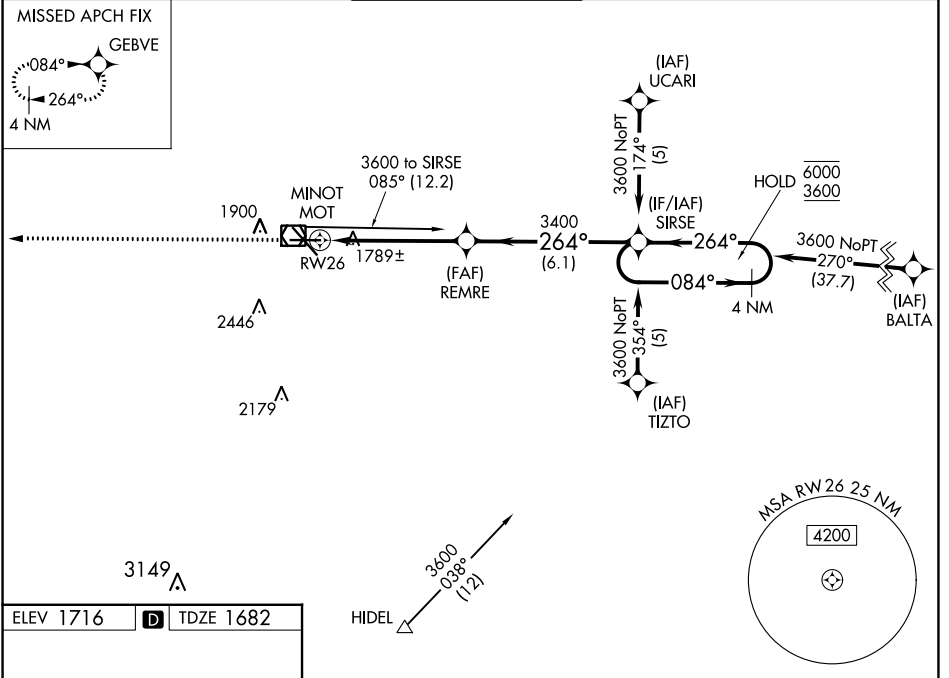
WAAS CH <b>56516</b> W <b>26A</b>	APP CRS <b>264°</b>	Rwy Idg TDZE Apt Elev	<b>6348</b> <b>1682</b> <b>1716</b>
---	------------------------	-----------------------------	---

# RNAV (GPS) RWY 26

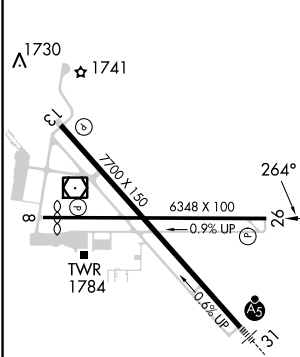
MINOT INTL (MOT)

RNP APCH.		MISSED APPROACH: Climb to 3900 direct GEBVE and hold.	
<p><b>▽</b> For uncompensated Baro-VNAV systems, LNAV/VNAV NA below -18°C or above 54°C.</p>			

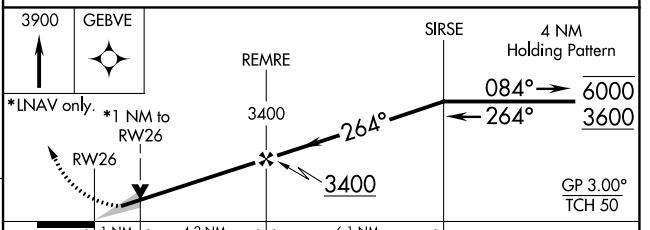
ASOS <b>118.725</b>	MINOT APP CON * <b>119.6 363.8</b>	MAGIC CITY TOWER * <b>118.2 (CTAF) 0 251.125</b>	GND CON <b>121.9</b>	UNICOM <b>122.95</b>
------------------------	---------------------------------------	---	-------------------------	-------------------------



ELEV 1716	<b>D</b>	TDZE 1682
-----------	----------	-----------



REIL Rwy 13  
REIL Rwy 8 and 26  
HIRL Rwy 8-26 and 13-31



CATEGORY	A	B	C	D
LPV DA		1932-1	250 (300-1)	
LNAV/VNAV DA		1932-1	250 (300-1)	
LNAV MDA	2040-1	358 (400-1)	2040-1 $\frac{3}{8}$	358 (400-1 $\frac{3}{8}$ )
CIRCLING	2200-1 484 (500-1)	2240-1 524 (600-1)	2800-3	1084 (1100-3)

NC-1, 11 JUL 2024 to 08 AUG 2024

NC-1, 11 JUL 2024 to 08 AUG 2024