

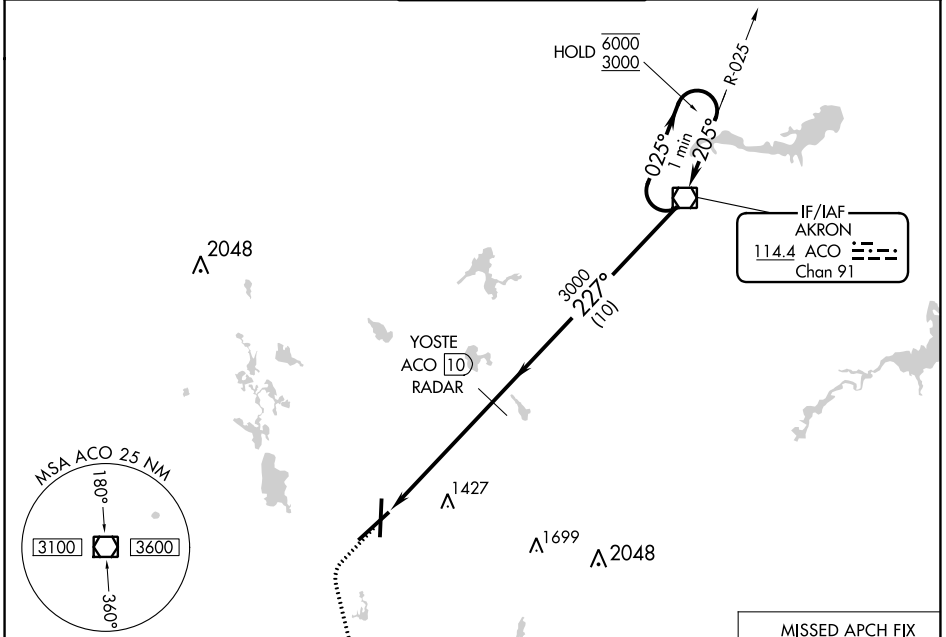
VOR/DME ACO <b>114.4</b> Chan <b>91</b>	APP CRS <b>227°</b>	Rwy Idg TDZE <b>1226</b> Apt Elev <b>1226</b>	<b>8204</b>
---	------------------------	---	-------------

# VOR RWY 23

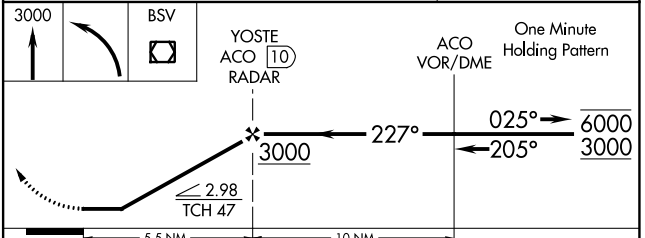
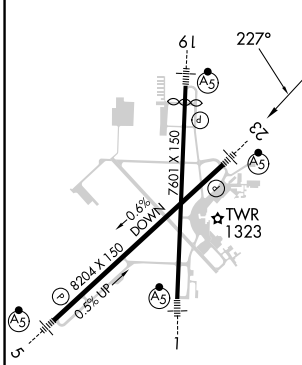
AKRON-CANTON RGNL (CAK)

DME or RADAR required.		MALSR 	MISSED APPROACH: Climb to 3000 then left turn direct BSV VOR/DME and hold.	
------------------------	--	-----------	--	--

ATIS <b>121.05</b>	CLEVELAND APP CON * <b>125.5 269.25</b>	AKRON-CANTON TOWER <b>134.75 279.575</b>	GND CON <b>121.7 348.6</b>	CLNC DEL <b>132.05</b>
-----------------------	--	---	-------------------------------	---------------------------



ELEV 1226	D	TDZE 1226
-----------	---	-----------



HIRL Rwy 1-19 and 5-23					
FAF to MAP 5.5 NM					
Knots	60	90	120	150	180
Min:Sec	5:30	3:40	2:45	2:12	1:50
<input checked="" type="checkbox"/> CIRCLING	1760-1 534 (600-1)		1780-1½ 554 (600-1½)		1800-2 574 (600-2)
CATEGORY	A	B	C	D	
S-23	1680/24 454 (500-½)		1680/40 454 (500-¾)	1680/50 454 (500-1)	

EC-2, 11 JUL 2024 to 08 AUG 2024

EC-2, 11 JUL 2024 to 08 AUG 2024