


LOC I-FFV	APP CRS	Rwy Idg	<b>7540</b>
<b>111.3</b>	<b>139°</b>	TDZE	<b>23</b>
		Apt Elev	<b>30</b>

# ILS or LOC RWY 14

SARASOTA/BRADENTON INTL (SRQ)

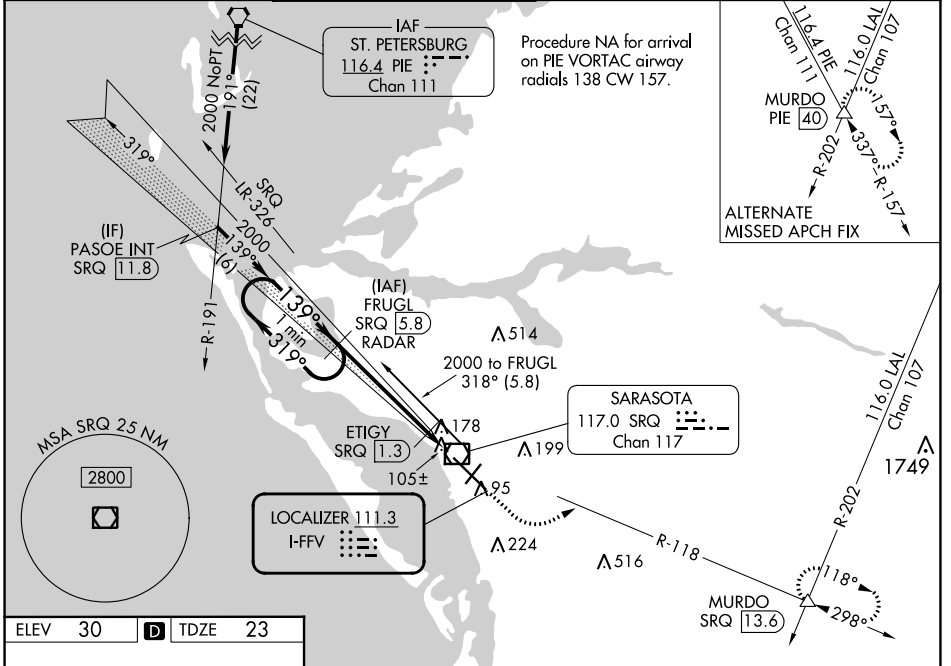
**DME or RADAR required for LOC only.**

**⚠** When control tower closed, S-ILS 14 Minimums NA; increase S-LOC 14 Cats A and B and ETIGY Fix Minimums S-LOC 14 all Cats visibility to 1 mile. When control tower closed, inop table does not apply to S-LOC 14 Cats A and B and ETIGY Fix Minimums S-LOC 14 all Cats.

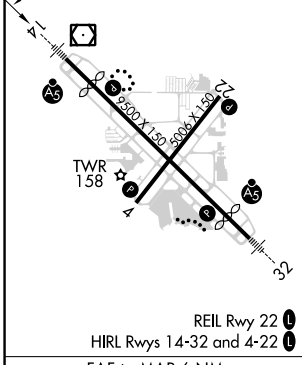
**MALSR**  


**MISSED APPROACH:** Climb to 1000 then climbing left turn to 2000 on SRQ VOR/DME R-118 to MURDO INT/SRQ 13.6 DME and hold.

ATIS <b>124.375</b>	TAMPA APP CON <b>119.65 353.575</b>	SARASOTA TOWER ★ <b>120.1(CTAF) 0 256.8</b>	GND CON <b>121.9 273.6</b>	CLNC DEL <b>118.25</b>	UNICOM <b>122.95</b>
------------------------	--	--	-------------------------------	---------------------------	-------------------------



ELEV 30	<b>D</b>	TDZE 23
---------	----------	---------



One Minute Holding Pattern

FRUGL SRQ 5.8 RADAR

ETIGY SRQ 1.3

1000 2000 MURDO

↑ SRQ R-118 △

\*LOC only.

CATEGORY	A	B	C	D
S-ILS 14	223-1/2 200 (200-1/2)			
S-LOC 14	500-1/2	477 (500-1/2)	500-1	477 (500-1)
CIRCLING	500-1	470 (500-1)	600-1 1/2	600-2
	ETIGY FIX MINIMUMS			
S-LOC 14	360-1/2 337 (400-1/2)			
CIRCLING	500-1	470 (500-1)	600-1 1/2	600-2
	570 (600-1 1/2) 570 (600-2)			

FAF to MAP 6 NM

Knots	60	90	120	150	180
Min:Sec	6:00	4:00	3:00	2:24	2:00

SE-3, 11 JUL 2024 to 08 AUG 2024

SE-3, 11 JUL 2024 to 08 AUG 2024