

VORTAC OLM 113.4 Chan 81	APP CRS 356°	Rwy Idg TDZE 208 Apt Elev 208
--	------------------------	---

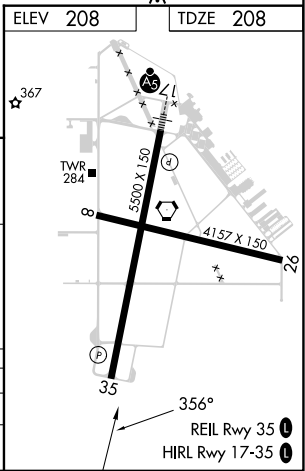
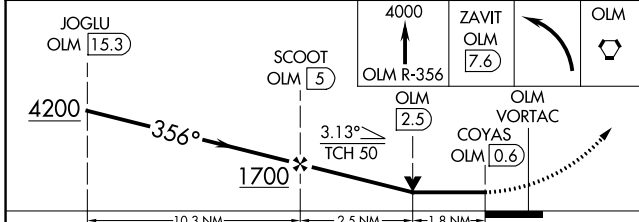
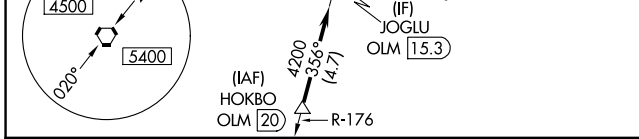
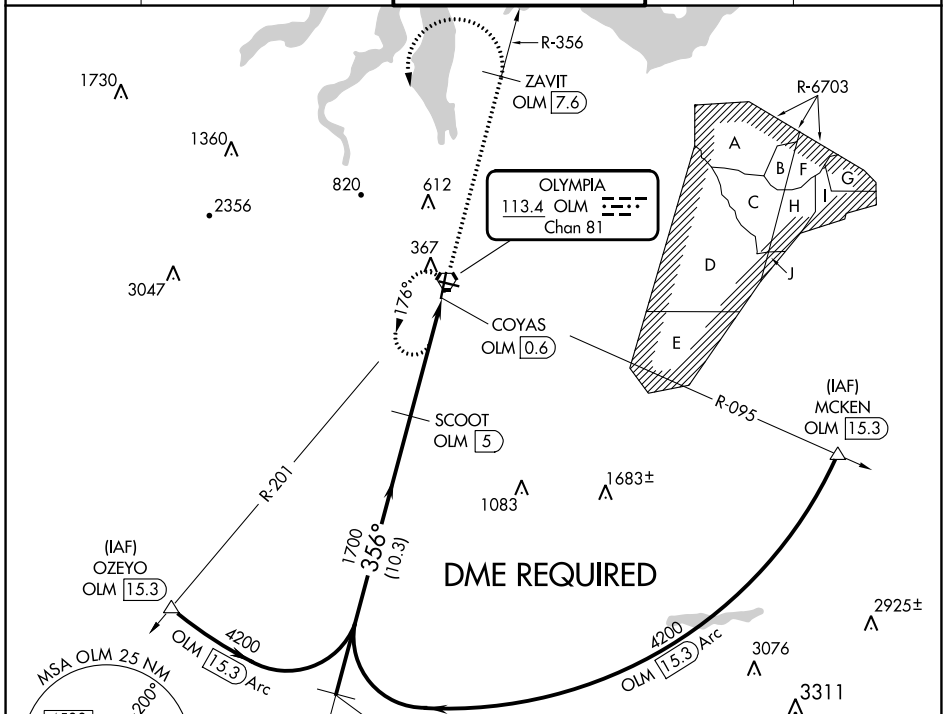
VOR RWY 35

OLYMPIA RGNL (OLM)

▼ Rwy 35 helicopter visibility reduction below 3/4 SM NA.
▲ DME required.

MISSED APPROACH: Climb to 4000 on OLM VORTAC R-356 to ZAVIT/OLM 7.6 DME then climbing left turn direct OLM VORTAC and hold.

ATIS★ 135.725	SEATTLE APP CON 121.1 290.9	OLYMPIA TOWER★ 124.4 (CTAF) 254.25	GND CON 121.6	UNICOM 122.95
-------------------------	---------------------------------------	---	-------------------------	-------------------------



CATEGORY	A	B	C	D
S-35	840-1	632 (700-1)	840-1 3/4	632 (700-1 3/4)
C CIRCLING	840-1 632 (700-1)	860-1 652 (700-1)	1020-2 1/2 812 (900-2 1/2)	1020-2 3/4 812 (900-2 3/4)

NW-1, 11 JUL 2024 to 08 AUG 2024

NW-1, 11 JUL 2024 to 08 AUG 2024