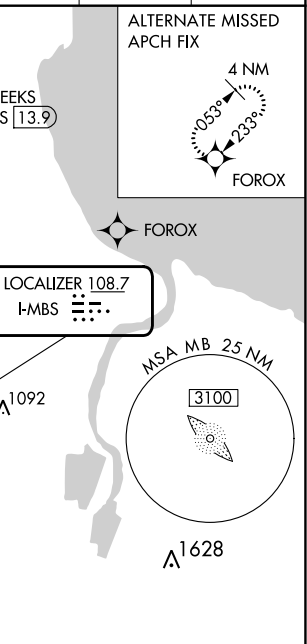
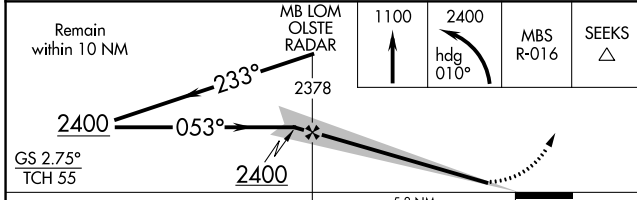
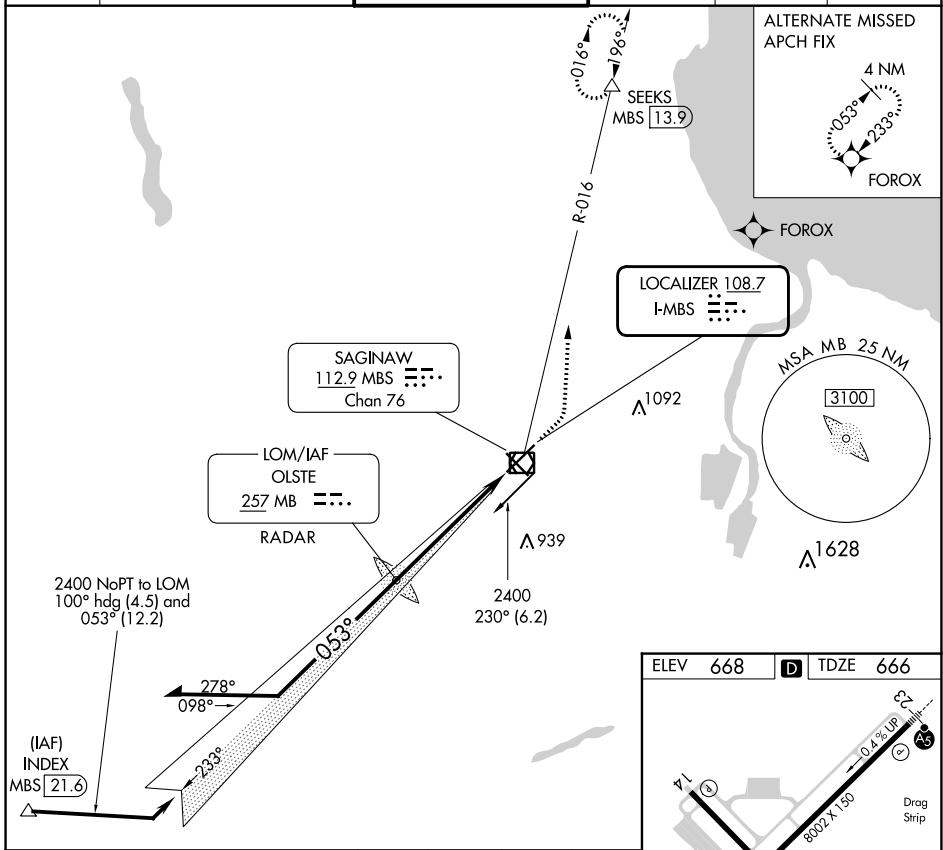


LOC I-MBS 108.7	APP CRS 053°	Rwy Idg 8002
		TDZE 666
		Apt Elev 668

ILS or LOC RWY 5

MBS INTL (MBS)

DME required.		MALSR	MISSED APPROACH: Climb to 1100 then climbing left turn to 2400 on heading 010° and MBS VOR/DME R-016 to SEEKS/MBS 13.9 DME and hold.			
* RVR 1800 authorized with use of FD or AP or HUD to DA.						
ATIS 125.925	GREAT LAKES APP CON * 126.45 235.625	SAGINAW TOWER * 120.1 (CTAF) 257.7	GND CON 121.7	CLNC DEL 121.85	UNICOM 122.95	



ELEV 668	TDZE 666
REIL Rwy 14 and 32	
HIRL Rwy 5-23 and 14-32	
FAF to MAP 5.8 NM	
Knots	60 90 120 150 180
Min:Sec	5:48 3:52 2:54 2:19 1:56

CATEGORY	A	B	C	D
S-ILS 5 *	866/24 200 (200-½)			
S-LOC 5	1100/24	434 (500-½)	1100/40	434 (500-¾)
CIRCLING	1100-1 432 (500-1)	1120-1 452 (500-1)	1240-1½ 572 (600-1½)	1240-2 572 (600-2)

EC-1, 11 JUL 2024 to 08 AUG 2024

EC-1, 11 JUL 2024 to 08 AUG 2024