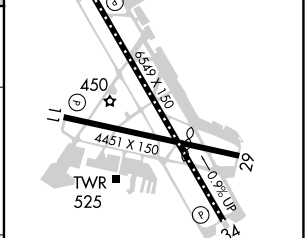
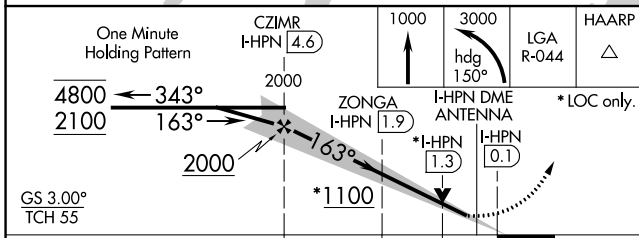
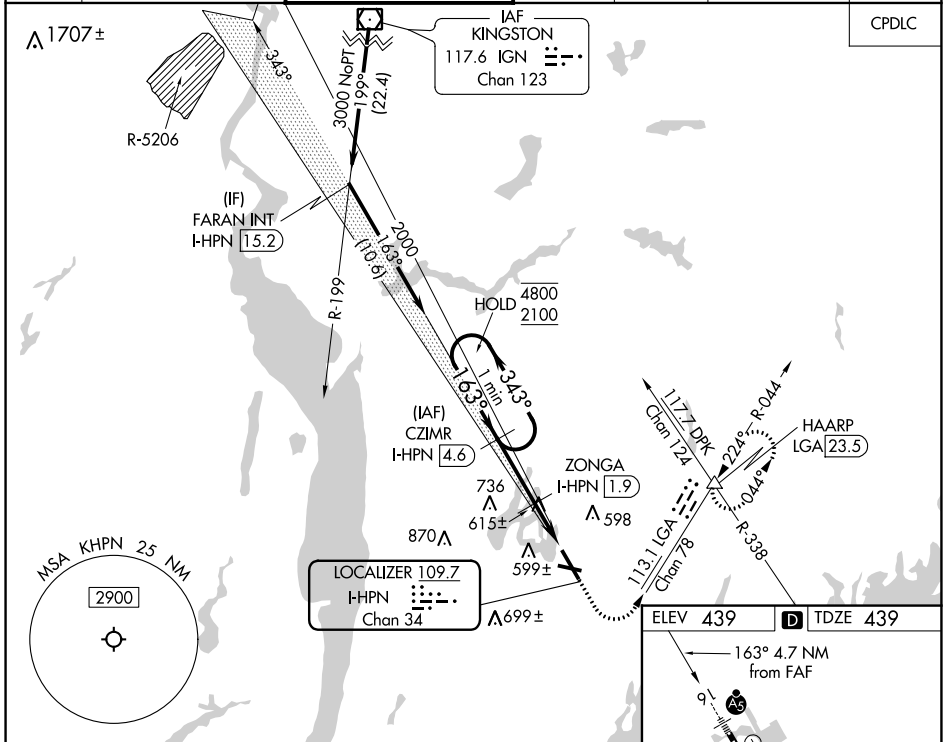


| | | |
|---|------------------------|---|
| LOC/DME I-HPN 109.7 Chan 34 | APP CRS 163° | Rwy Idg 6549 TDZE 439 Apt Elev 439 |
|---|------------------------|---|

ILS or LOC RWY 16

WESTCHESTER COUNTY (HPN)

| | | | | | | | | |
|---|--|------------|--|---|--|---------------------------|---------------------------|---|
| DME required for LOC only. | | MALS R | MISSED APPROACH: Climb to 1000 then climbing left turn to 3000 on heading 150° and LGA VOR/DME R-044 to HAARP INT/LGA 23.5 DME and hold, continue climb-in-hold to 3000. | | | | | |
| Circling Rwy 11, 29 NA at night. For inop ALS, increase S-LOC 16 Cats C/D visibility to 1 3/8 SM. | | | D-ATIS 133.8 | NEW YORK APP CON 120.8 126.4 257.65 | WESTCHESTER TOWER ★ 118.575 (CTAF) 0 284.65 | GND CON 121.825 | CLNC DEL 127.25 | CLNC DEL 126.4 (when twr closed) |



| CATEGORY | A | B | C | D |
|----------|--------|---------------|---|---|
| S-ILS 16 | | 639/18 | | 200 (200-1/2) |
| S-LOC 16 | 940/24 | 501 (600-1/2) | | 940/55 501 (600-1) |
| CIRCLING | 980-1 | 541 (600-1) | | 1080-1 3/4 641 (700-1 3/4) 1200-2 1/2 761 (800-2 1/2) |

MIRL Rwy 11-29
 HIRL Rwy 16-34
 REL Rwys 11 and 34
 TDZ/CL Rwy 16

NE-2, 11 JUL 2024 to 08 AUG 2024

NE-2, 11 JUL 2024 to 08 AUG 2024