

WAAS CH <b>70346</b> <b>W33A</b>	APP CRS <b>330°</b>	Rwy Idg TDZE Apt Elev	<b>4007</b> <b>265</b> <b>265</b>
----------------------------------------	------------------------	-----------------------------	-----------------------------------------

# RNAV (GPS) RWY 33

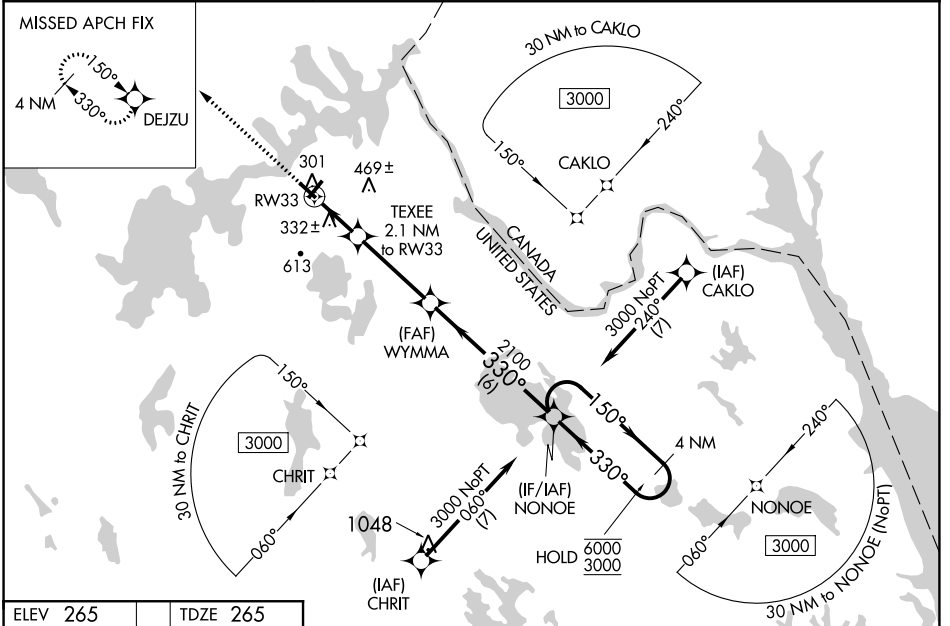
PRINCETON MUNI (PNN)

RNP APCH - GPS.

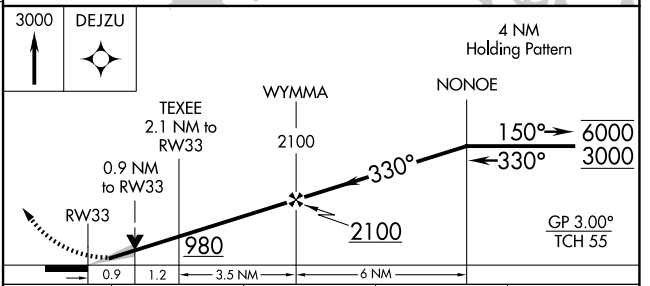
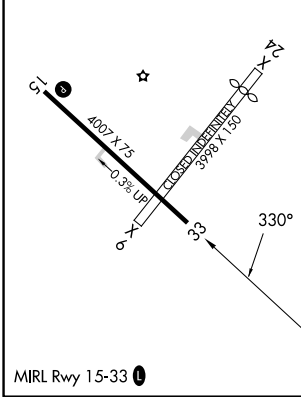
**⚠** Baro-VNAV and VDP NA when using Bangor altimeter setting. For uncompensated Baro-VNAV systems, LNAV/VNAV NA below -15°C or above 54°C. When local altimeter setting not received, use Bangor altimeter setting; increase LPV DA to 661 feet and all visibilities 1/8 SM; increase LNAV/VNAV DA to 683 feet and all visibilities 1/8 SM; increase all MDAs 160 feet and visibility LNAV Cat C/D 3/8 SM and Circling Cat C/D 1/2 SM.

**MISSED APPROACH:** Climb to 3000 direct DEJZU and hold, continue climb-in-hold to 3000.

AWOS-AV <b>122.7</b>	BOSTON CENTER <b>124.25 290.5</b>	UNICOM <b>122.7 (CTAF) 0</b>
-------------------------	--------------------------------------	---------------------------------



ELEV 265	TDZE 265
----------	----------



CATEGORY	A	B	C	D
LPV DA		515-1	250 (300-1)	
LNAV/VNAV DA		537-1	272 (300-1)	
LNAV MDA		600-1	335 (400-1)	
CIRCLING	720-1 455 (500-1)	820-1 555 (600-1)	980-2 715 (800-2)	980-2 1/4 715 (800-2 1/4)

NE-1, 11 JUL 2024 to 08 AUG 2024

NE-1, 11 JUL 2024 to 08 AUG 2024