


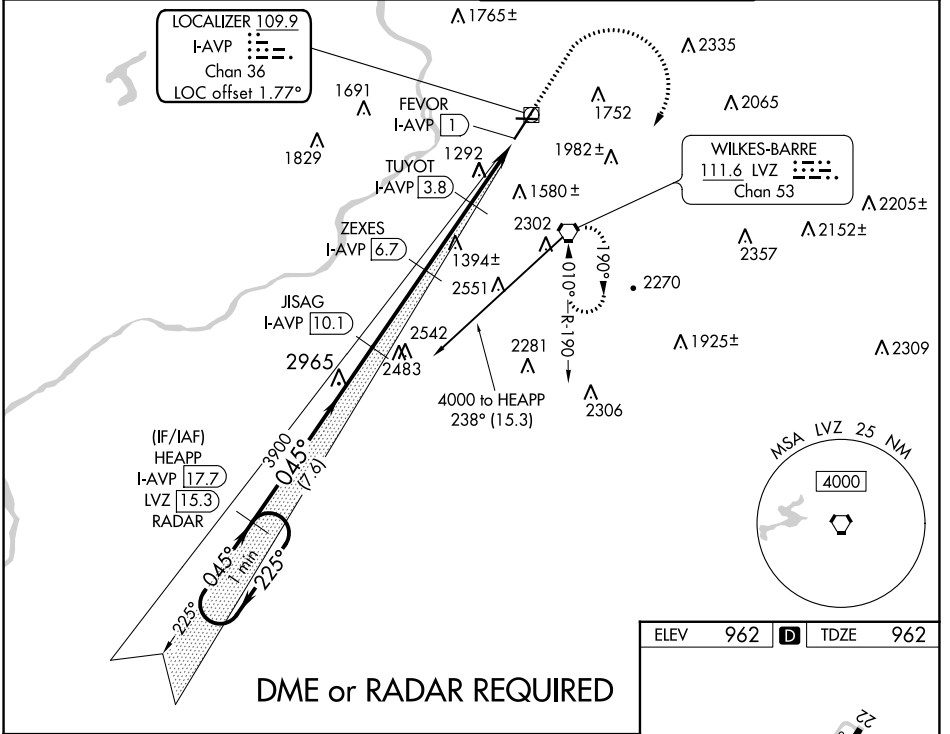
LOC/DME I-AVP 109.9 Chan 36	APP CRS 045°	Rwy Idg TDZE Apt Elev	7502 962 962
---	------------------------	-----------------------------	---

ILS or LOC RWY 4

WILKES-BARRE/SCRANTON INTL (AVP)

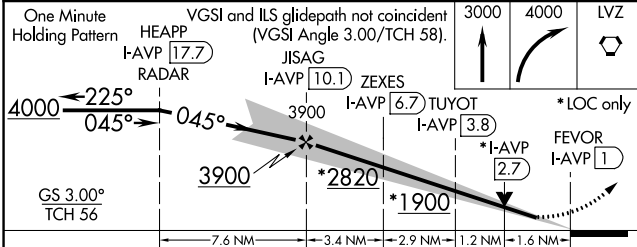
<p>⚠ Circling to Rwy 10, 28 NA at night. Circling NA for Cats C and D southeast of Rwy 4-22. Autopilot coupled approach NA below 2530. DME required. For inop ALS, increase S-ILS 4 all Cats visibility to RVR 5000, and S-LOC 4 Cat C/D visibility to 1½ SM.</p>	<p>MALSR AS</p> 	<p>MISSED APPROACH: Climb to 3000 then climbing right turn to 4000 direct LVZ VORTAC and hold.</p>
--	---	---

<p>ATIS 135.75</p>	<p>WILKES-BARRE APP CON 120.95 256.7 (280°-100°) 126.3 256.7 (101°-279°)</p>	<p>WILKES-BARRE TOWER 120.1 257.8</p>	<p>GND CON 121.9</p>
-------------------------------	--	--	---------------------------------

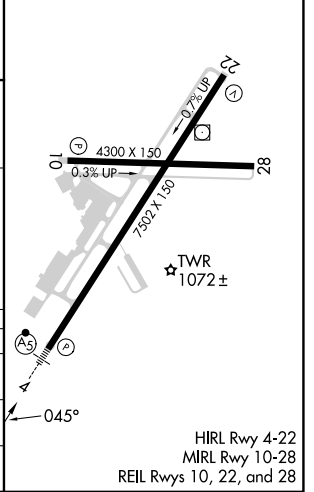


NE-4, 11 JUL 2024 to 08 AUG 2024

NE-4, 11 JUL 2024 to 08 AUG 2024



ELEV	962	D	TDZE	962
------	-----	----------	------	-----



CATEGORY	A	B	C	D
S-ILS 4	1262/24		300 (300-1)	
S-LOC 4	1540/24	578 (600-1)	1540-1¼	578 (600-1¼)
C CIRCLING	1840-1¼ 878 (900-1¼)	1980-1½ 1018 (1100-1½)	1980-3 1018 (1100-3)	2280-3 1318 (1400-3)

HIRL Rwy 4-22
MIRL Rwy 10-28
REIL Rws 10, 22, and 28