

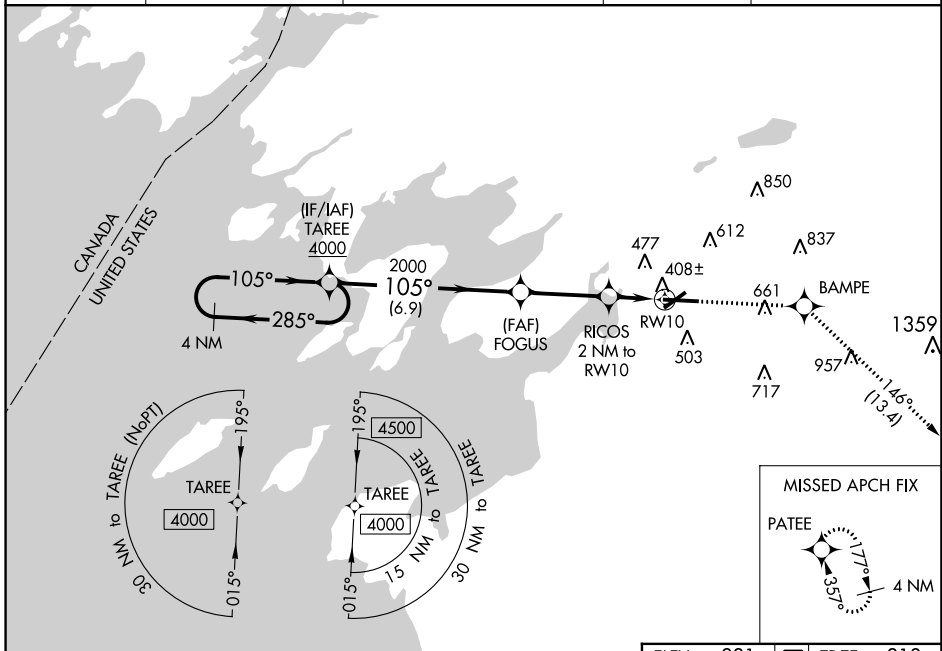
WAAS CH <b>53522</b> <b>W10A</b>	APP CRS <b>105°</b>	Rwy Idg TDZE Apt Elev	<b>7001</b> <b>318</b> <b>331</b>
--	------------------------	-----------------------------	---

# RNAV (GPS) RWY 10

WATERTOWN INTL (ART)

RNP APCH.	MISSED APPROACH: Climb to 3600 direct BAMPE and on track 146° to PATEE and hold.
<p><b>▽</b></p> <p><b>▲</b></p> <p>For uncompensated Baro-VNAV systems, LNAV/VNAV NA below -20°C or above 54°C. Rwy 10 helicopter visibility reduction below ¾ SM NA.</p>	

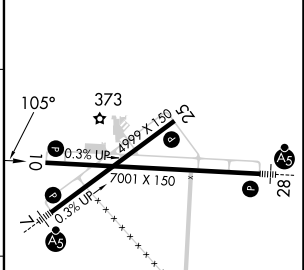
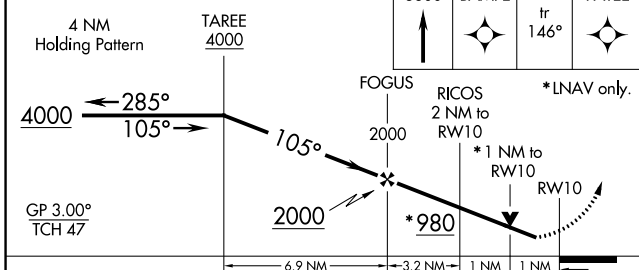
ASOS <b>132.325</b>	KGTB ATIS <b>119.525</b>	WHEELER-SACK APP CON <b>124.875 257.6 307.125</b>	CLNC DEL <b>120.8</b>	UNICOM <b>123.0 (CTAF) 0</b>
------------------------	-----------------------------	--	--------------------------	---------------------------------



NE-2, 11 JUL 2024 to 08 AUG 2024

NE-2, 11 JUL 2024 to 08 AUG 2024

ELEV	331	<b>D</b>	TDZE	318
------	-----	----------	------	-----



CATEGORY	A	B	C	D
LPV DA		568-¾	250 (300-¾)	
LNAV/VNAV DA		578-¾	260 (300-¾)	
LNAV MDA		660-1	342 (400-1)	
<b>C</b> CIRCLING	960-1	629 (700-1)	980-1¼ 649 (700-1¼)	1080-2½ 749 (800-2½)

HIRL Rwy 7-25 <b>0</b>
MIRL Rwy 10-28 <b>0</b>