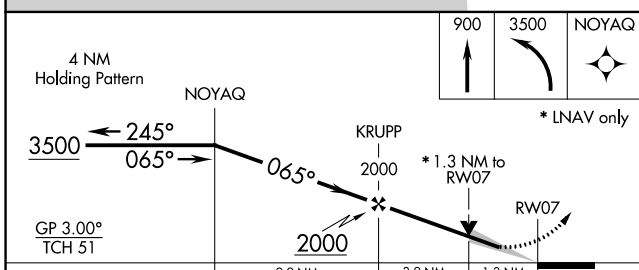
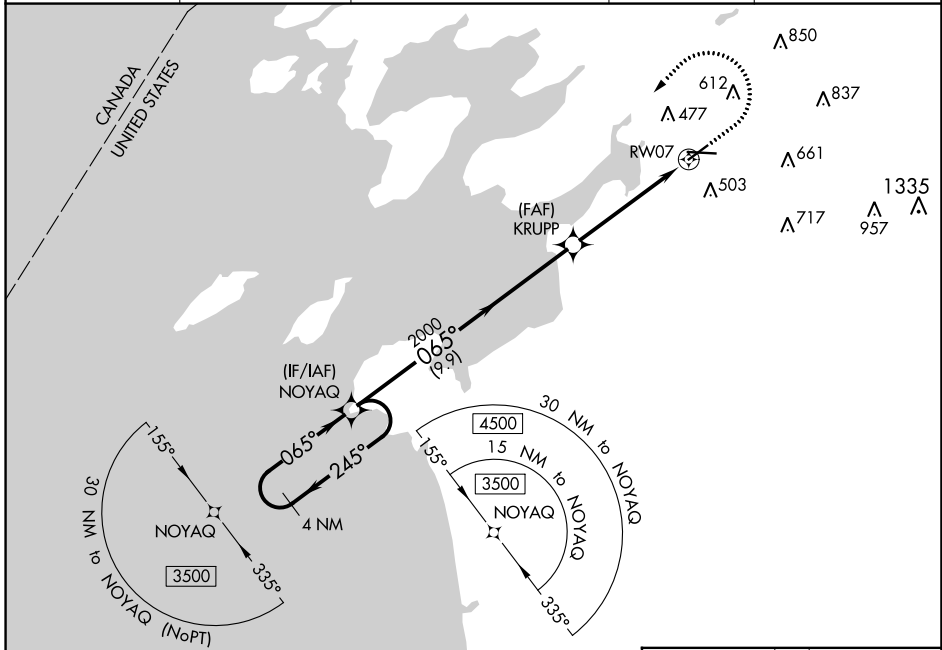


WAAS CH <b>82510</b> <b>W07A</b>	APP CRS <b>065°</b>	Rwy Idg TDZE Apt Elev	<b>4784</b> <b>319</b> <b>331</b>
--	------------------------	-----------------------------	---

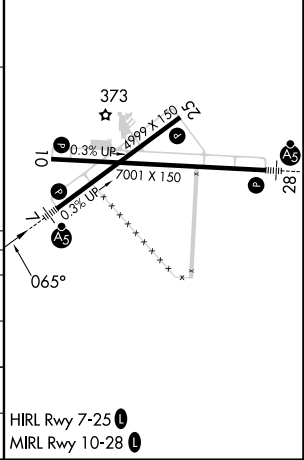
# RNAV (GPS) RWY 7

WATERTOWN INTL (ART)

RNP APCH.		MALSR		MISSED APPROACH: Climb to 900 then climbing left turn to 3500 direct NOYAQ and hold.	
<p><b>▽</b> <b>▲</b></p> <p>For inop ALS, increase LPV, LNAV/VNAV visibilities to 3/4 SM and LNAV Cat C/D visibilities to 1 3/8 SM. For uncompensated Baro-VNAV systems, LNAV/VNAV NA below -18°C or above 54°C.</p>					
ASOS <b>132.325</b>	KGTB ATIS <b>119.525</b>	WHEELER-SACK APP CON <b>124.875 257.6 307.125</b>		CLNC DEL <b>120.8</b>	UNICOM <b>123.0 (CTAF)</b>



ELEV	331	TDZE	319
------	-----	------	-----



CATEGORY	A	B	C	D
LPV DA		519-1/2	200 (200-1/2)	
LNAV/VNAV DA		578-1/2	259 (300-1/2)	
LNAV MDA	780-1/2	461 (500-1/2)	780-1	461 (500-1)
<b>C</b> CIRCLING	960-1	629 (700-1)	980-1 3/4 649 (700-1 3/4)	1080-2 1/2 749 (800-2 1/2)

NE-2, 11 JUL 2024 to 08 AUG 2024

NE-2, 11 JUL 2024 to 08 AUG 2024