


VORTAC ART 109.8 Chan 35	APP CRS 043°	Rwy Idg TDZE 319 Apt Elev 331	4784
--	------------------------	---	-------------

VOR RWY 7

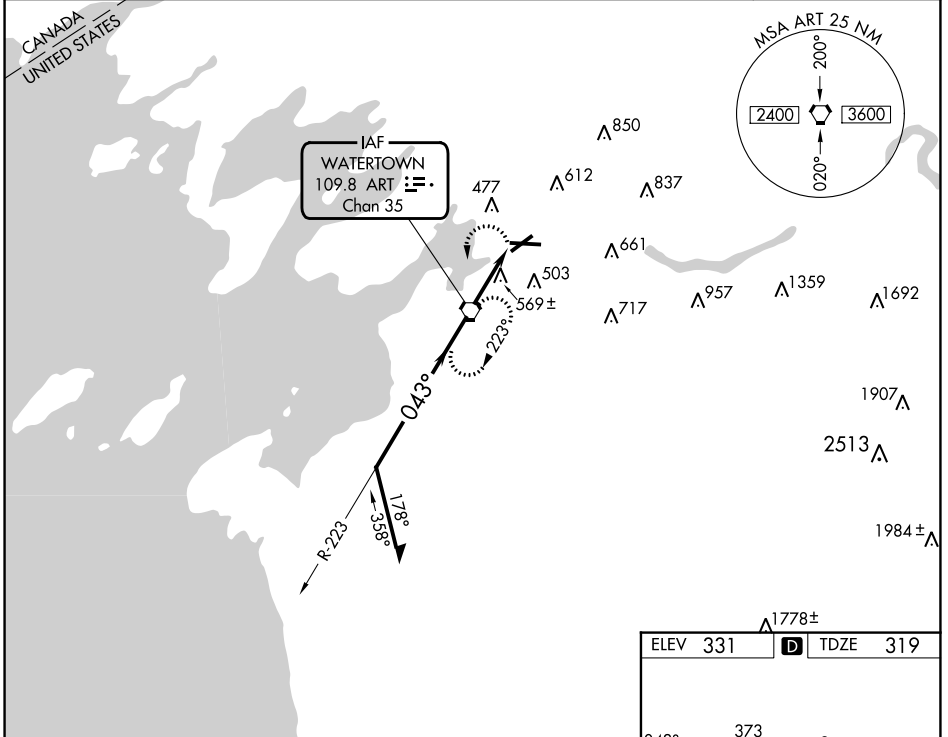
WATERTOWN INTL (ART)

⚠ Inop table does not apply. When local altimeter setting not received, use Fort Drum altimeter setting and increase all MDAs 100 feet and visibility S-7 Cat C/D and Circling Cat D ¼ SM and Circling Cat C ½ SM. VDP NA when using Fort Drum altimeter setting.

MALSR 

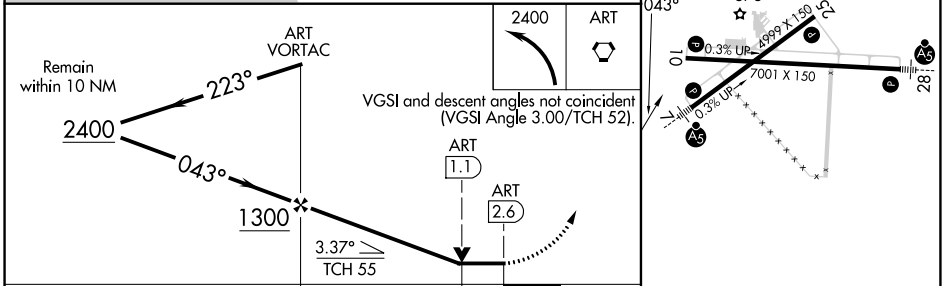
MISSED APPROACH: Climbing left turn to 2400 direct ART VORTAC and hold, continue climb-in-hold to 2400.

ASOS 132.325	KGTB ATIS 119.525	WHEELER-SACK APP CON 124.875 257.6 307.125	CLNC DEL 120.8	UNICOM 123.0 (CTAF)
------------------------	-----------------------------	--	--------------------------	-------------------------------



NE-2, 11 JUL 2024 to 08 AUG 2024

NE-2, 11 JUL 2024 to 08 AUG 2024



CATEGORY	A	B	C	D
S-7	880-1 561 (600-1)		880-1½ 561 (600-1½)	
C CIRCLING	960-1 629 (700-1)		980-1¾ 649 (700-1¾)	1080-2½ 749 (800-2½)

HIRL Rwy 7-25 Ⓡ	MIRL Rwy 10-28 Ⓡ
FAF to MAP 2.6 NM	
Knots	60 90 120 150 180
Min:Sec	2:36 1:44 1:18 1:02 0:52