

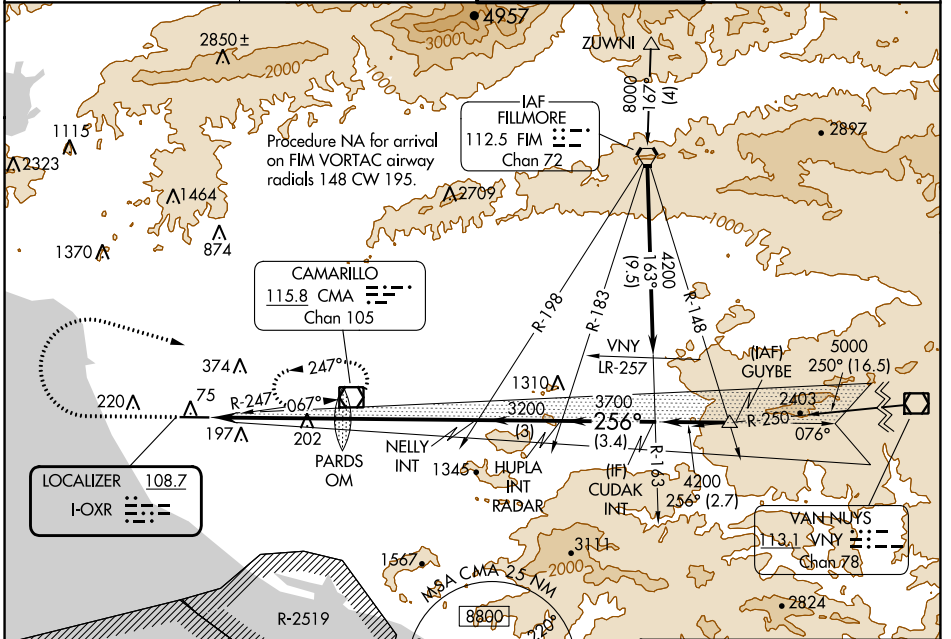
LOC I- OXR	APP CRS 256°	Rwy ldg TDZE Apt Elev	5500 44 45
108.7			

ILS or LOC RWY 25

OXNARD (OXR)

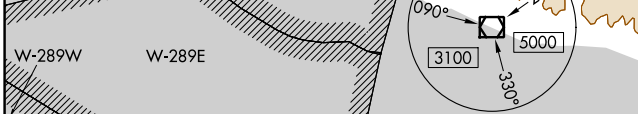
<p>Rwy 25 helicopter visibility reduction below 3/4 SM NA. Autopilot coupled approach NA below 1086. Inop table does not apply.</p>	<p>MALSF</p>	<p>MISSED APPROACH: Climb to 1900 then climbing right turn to 4400 direct CMA VOR/DME and hold, continue climb-in-hold to 4400.</p>
---	--------------	---

ATIS 118.05	POINT MUGU APP CON * 124.7 335.5	OXNARD TOWER * 134.95 (CTAF) 0 257.8	GND CON 121.9
-----------------------	--	--	-------------------------

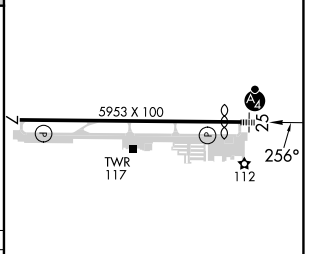
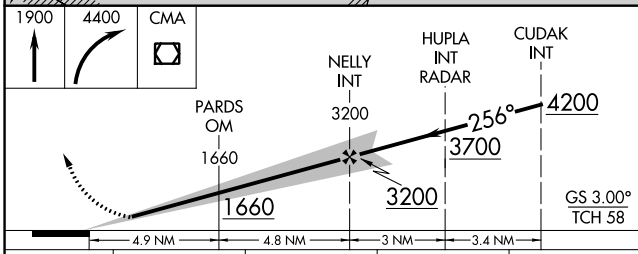


SW-3, 11 JUL 2024 to 08 AUG 2024

SW-3, 11 JUL 2024 to 08 AUG 2024



ELEV 45	TDZE 44
---------	---------



CATEGORY	A	B	C	D
S-ILS 25		424-1 380 (400-1)		
S-LOC 25		460-1 416 (500-1)		
CIRCLING	500-1 455 (600-1)	520-1 475 (500-1)	700-1 3/4 655 (700-1 3/4)	720-2 1/4 675 (700-2 1/4)

REIL Rwy 7					
MIRL Rwy 7-25					
FAF to MAP 9.7 NM					
Knots	60	90	120	150	180
Min:Sec	9:42	6:28	4:51	3:53	3:14