

WAAS CH <b>86299</b> <b>W25A</b>	APP CRS <b>256°</b>	Rwy Idg <b>5500</b> TDZE <b>44</b> Apt Elev <b>45</b>
--	------------------------	---

# RNAV (GPS) RWY 25

OXNARD (OXR)

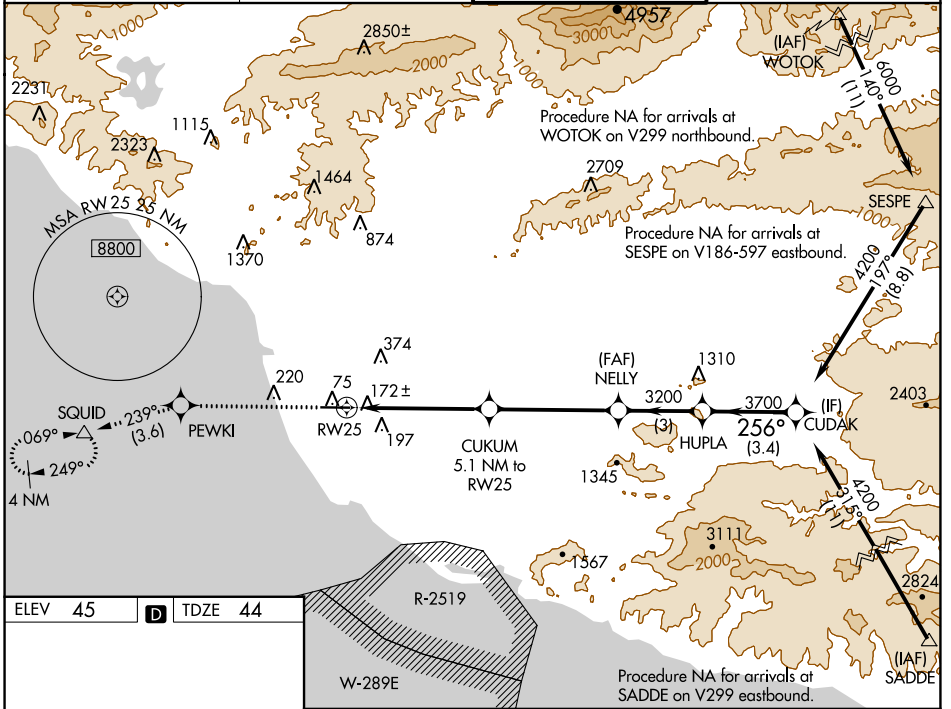
RNP APCH-GPS.

**⚠** Inoperative table does not apply. Baro-VNAV NA when using Camarillo altimeter setting. For uncompensated Baro-VNAV systems, LNAV/VNAV NA below -15°C or above 43°C. When local altimeter setting not received, use Camarillo altimeter setting and increase LPV DA to 312 feet, increase LNAV/VNAV DA to 351 feet; increase all MDAs 20 feet and Circling Cat C visibility ¼ SM.

MALSF

MISSED APPROACH: Climb to 2000 direct PEWKI and on track 239° to SQUID and hold.

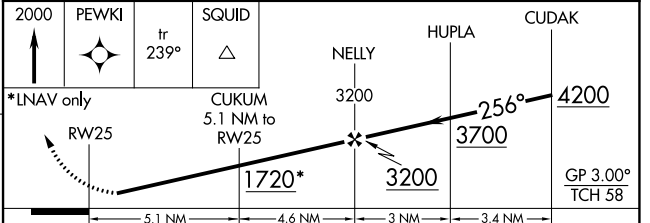
ATIS <b>118.05</b>	POINT MUGU APP CON* <b>124.7 335.5</b>	OXNARD TOWER* <b>134.95 (CTAF) 0 257.8</b>	GND CON <b>121.9</b>
-----------------------	---	---	-------------------------



ELEV 45	<b>D</b>	TDZE 44
---------	----------	---------

REIL Rwy 7

MIRL Rwy 7-25



CATEGORY	A	B	C	D
LPV DA	294-1 250 (300-1)			
LNAV/VNAV DA	333-1 289 (300-1)			
LNAV MDA	520-1	476 (500-1)	520-1 <sup>3</sup> / <sub>8</sub>	476 (500-1 <sup>3</sup> / <sub>8</sub> )
CIRCLING	520-1	475 (500-1)	700-1 <sup>3</sup> / <sub>4</sub> 655 (700-1 <sup>3</sup> / <sub>4</sub> )	760-2 <sup>1</sup> / <sub>4</sub> 715 (800-2 <sup>1</sup> / <sub>4</sub> )

SW-3, 11 JUL 2024 to 08 AUG 2024

SW-3, 11 JUL 2024 to 08 AUG 2024