

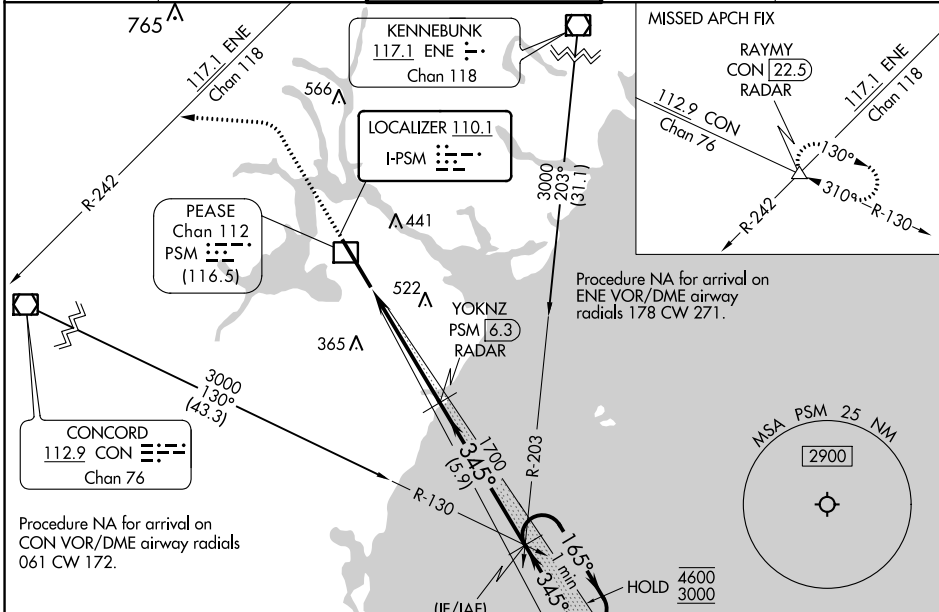
LOC I-PSM 110.1	APP CRS 345°	Rwy Idg TDZE Apt Elev	11321 84 100
---------------------------	------------------------	-----------------------------	---

ILS or LOC RWY 34

PORTSMOUTH INTL AT PEASE (PSM)

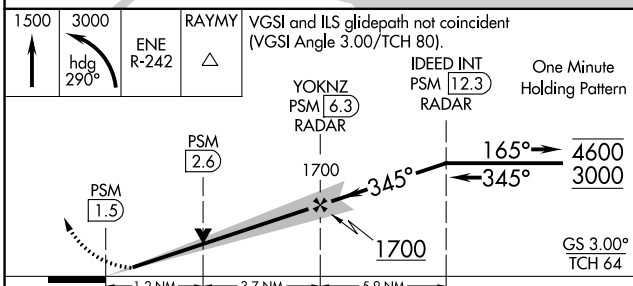
DME or RADAR required.		MALSR 	MISSED APPROACH: Climb to 1500 then dimbing left turn on heading 290° to 3000 and ENE VOR/DME R-242 to RAYMY INT/CON VOR/DME 22.5 DME/RADAR and hold.
Circling NA east of Rwy 16-34. DME from PSM DME. Simultaneous reception of I-PSM and PSM DME required. For inop ALS, increase S-ILS 34 Cat E visibility to RVR 4000; increase S-LOC 34 Cat E visibility to 1 1/2 SM.			

ATIS 132.05 273.5	BOSTON APP CON 125.05 269.4	PORTSMOUTH TOWER 128.4 269.0	GND CON 120.95 275.8	CLNC DEL 335.8
-----------------------------	---------------------------------------	--	--------------------------------	--------------------------

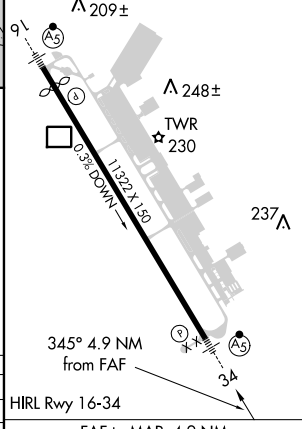


Procedure NA for arrival on CON VOR/DME airway radials 061 CW 172.

Use of CON R-130 and ENE R-203 may be necessary to locate IDEED intersection.



ELEV 100	TDZE 84
----------	---------



CATEGORY	A	B	C	D	E	HRL Rwy 16-34
S-ILS 34	284/24 200 (200-1/2)					
S-LOC 34	540/24	456 (500-1/2)	540/45	456 (500-3/4)		
CIRCLING	540-1 440 (500-1)	560-1 460 (500-1)	680-1 1/2 580 (600-1 1/2)	780-2 1/4 680 (700-2 1/4)	800-2 1/2 700 (700-2 1/2)	FAF to MAP 4.9 NM
	Knots	60	90	120	150	180
	Min:Sec	4:54	3:16	2:27	1:58	1:38

NE-1, 11 JUL 2024 to 08 AUG 2024

NE-1, 11 JUL 2024 to 08 AUG 2024