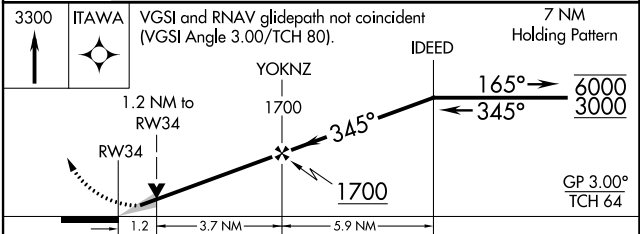
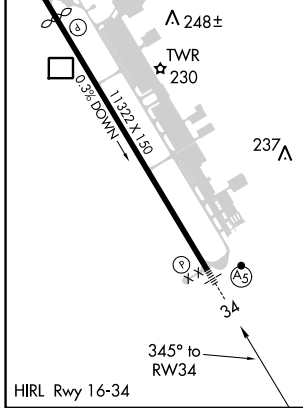
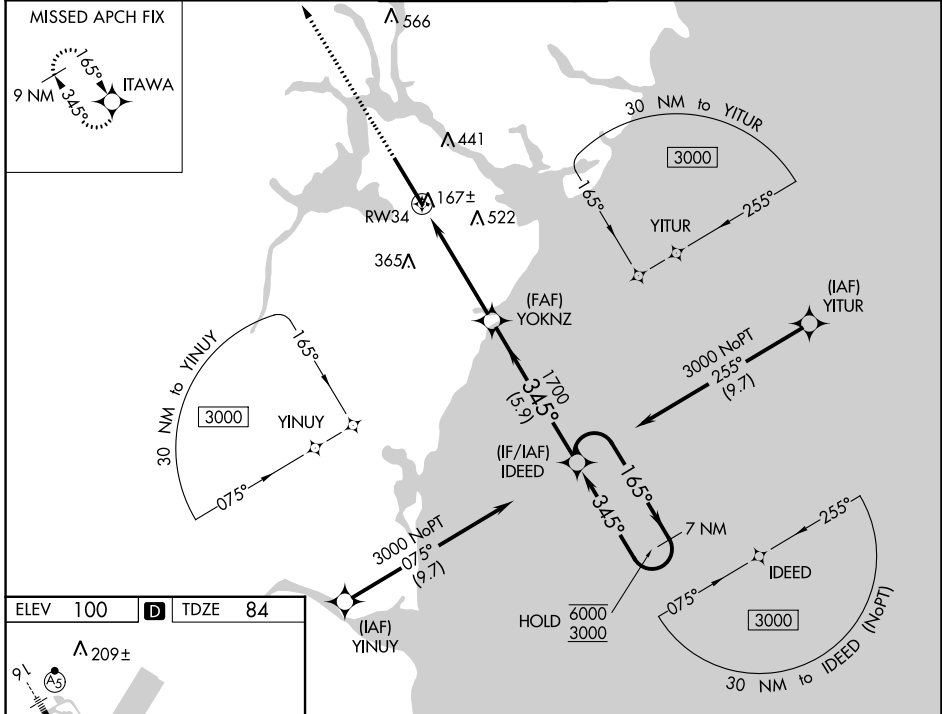


WAAS Ch 97323 W34A	APP CRS 345°	Rwy Idg TDZE Apt Elev	11321 84 100
--	------------------------	-----------------------------	---

RNAV (GPS) RWY 34

PORTSMOUTH INTL AT PEASE (PSM)

RNP APCH - GPS.		MALSR 			MISSED APPROACH: Climb to 3300 direct ITAWA and hold, continue climb-in-hold to 3300	
⚠️ Circling NA east of Rwy 16-34. For uncompensated Baro-VNAV systems, LNAV/VNAV NA below -15°C or above 54°C. For inop ALS, increase LPV Cat E visibility to RVR 4000; increase LNAV/VNAV all Cats visibility to RVR 4500; increase LNAV Cat E visibility to 1 3/8 SM.	ATIS 132.05 273.5	BOSTON APP CON 125.05 269.4	PORTSMOUTH TOWER 128.4 269.0	GND CON 120.95 275.8	CLNC DEL 335.8	



3300 ITAWA VGSi and RNAV glidepath not coincident (VGSi Angle 3.00°/TCH 80).	IDEED Holding Pattern 7 NM				
YOKNZ 1700 RWY 34 1.2 NM to RWY 34	GP 3.00° TCH 64				
CATEGORY	A	B	C	D	E
LPV DA	284/24		200 (200-1/2)		
LNAV/VNAV DA	361/24		277 (300-1/2)		
LNAV MDA	540/24 456 (500-1/2)		540/45		456 (500-7/8)
ⓐ CIRCLING	540-1 440 (500-1)	560-1 460 (500-1)	680-1 1/2 580 (600-1 1/2)	780-2 1/4 680 (700-2 1/4)	800-2 1/2 700 (700-2 1/2)

NE-1, 11 JUL 2024 to 08 AUG 2024

NE-1, 11 JUL 2024 to 08 AUG 2024