

LOC/DME I-PUC 109.35 Chan 30 (Y)	APP CRS 007°	Rwy Ldg TDZE 8316 5862 Apt Elev 5958
---	------------------------	---

ILS or LOC RWY 1

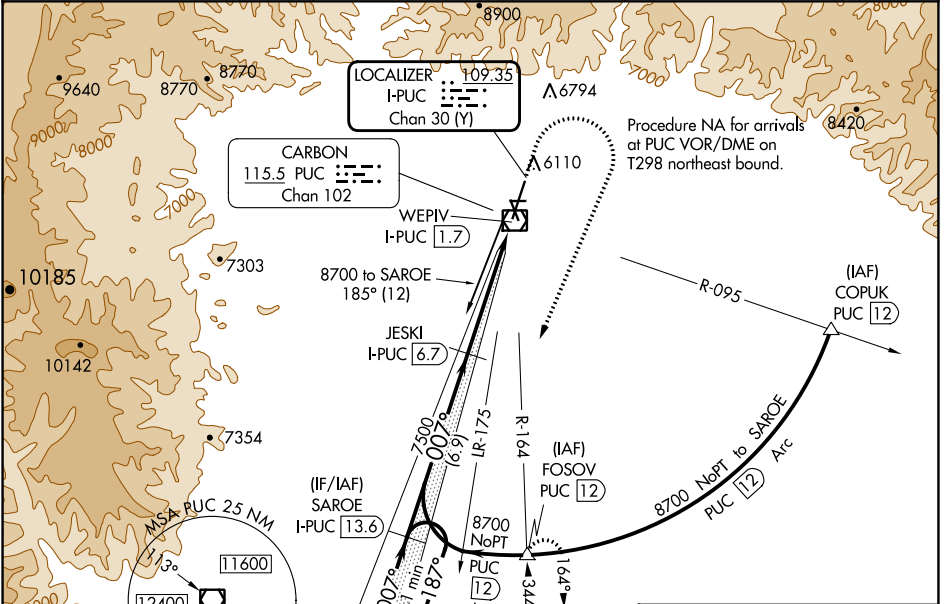
CARBON COUNTY RGNL/BUCK DAVIS FLD (PUC)

DME required for procedure entry. DME required.

NA Circling NA at night. For inoperative ALS, increase S-ILS 1 all Cats visibility to 7/8 SM. Inoperative table does not apply to S-ILS 1# all Cats.

MALSIF
MISSED APPROACH: Climb to 6300 then climbing right turn to 10000 on heading 200° and on PUC VOR/DME R-164 to FOSOV/PUC 12 DME and hold, continue climb-in-hold to 10000. #Missed approach requires minimum climb of 339 feet per NM to 7100.

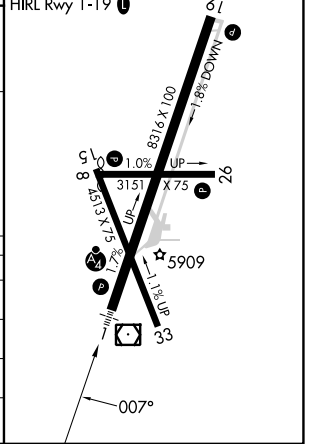
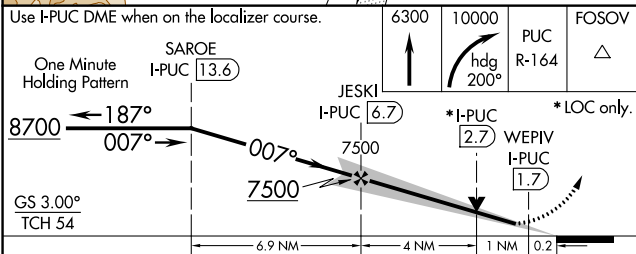
ASOS 135.425	SALT LAKE CENTER 133.9 370.85	UNICOM 122.8 (CTAF) 0
------------------------	---	---------------------------------



SW-4, 11 JUL 2024 to 08 AUG 2024

SW-4, 11 JUL 2024 to 08 AUG 2024

ELEV 5958	TDZE 5862
REIL Rwys 8, 19 and 26	MIRL Rwy 15-33
HIRL Rwy 1-19	



CATEGORY	A	B	C	D
S-ILS 1#		6062-3/4	200 (200-3/4)	
S-ILS 1		6127-3/4	265 (200-3/4)	
S-LOC 1		6240-3/4	378 (300-3/4)	
CIRCLING	6660-1 702 (800-1)	6860-1 1/4 902 (1000-1 1/4)	7120-3 1162 (1200-3)	NA

ILS or LOC RWY 1