

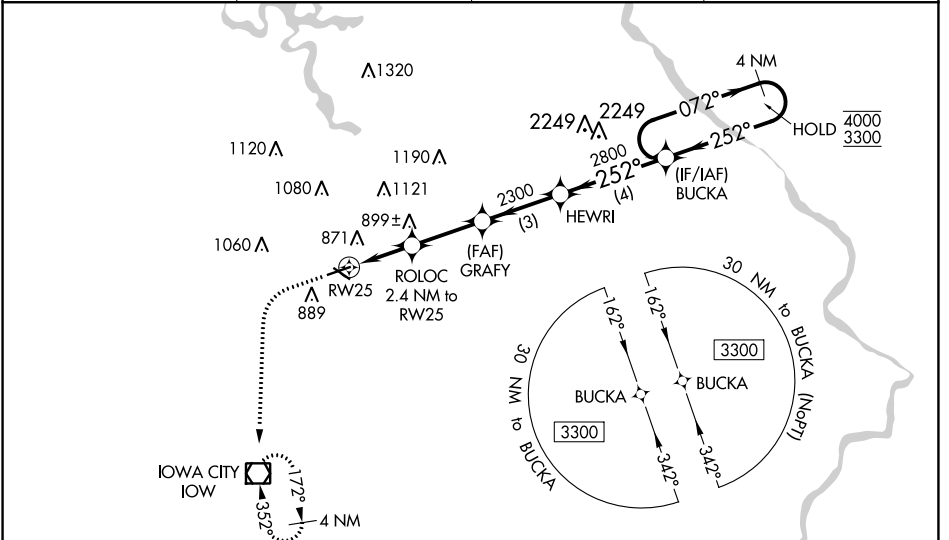
WAAS CH <b>58207</b> <b>W25A</b>	APP CRS <b>252°</b>	Rwy Idg TDZE <b>659</b> Apt Elev <b>684</b>
--	------------------------	---

# RNAV (GPS) RWY 25

IOWA CITY MUNI (IOW)

RNP APCH - GPS.	<p><b>⚠</b> Circling Rwy 12 NA at night. Baro-VNAV and VDP NA when using Cedar Rapids altimeter setting. Rwy 25 helicopter visibility reduction below <math>\frac{3}{4}</math> SM NA. For uncompensated Baro-VNAV systems, LNAV/VNAV NA below -23°C or above 54°C. When local altimeter setting not received, use Cedar Rapids altimeter setting: increase LPV DA to 973 and all visibilities <math>\frac{1}{8}</math> SM, increase LNAV/VNAV DA to 1214 feet and all visibilities <math>\frac{1}{4}</math> SM; increase all MDAs 80 feet and visibility Cats C/D <math>\frac{1}{4}</math> SM.</p>	<p>MISSED APPROACH: Climb to 1200 then climbing left turn to 2600 direct IOW VOR/DME and hold, continue climb-in-hold to 2600.</p>

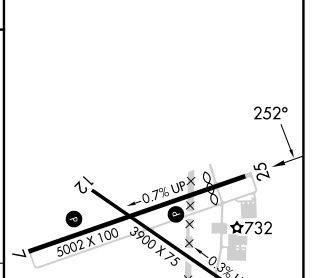
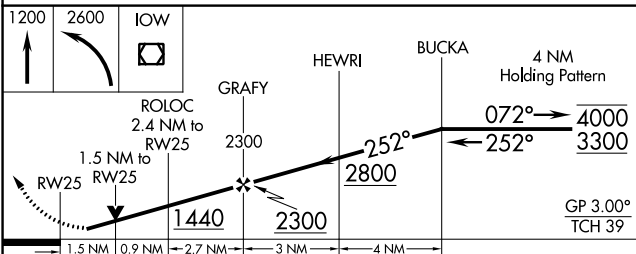
ASOS <b>128,075</b>	CEDAR RAPIDS APP CON* <b>119.7 266.8</b>	CLNC DEL <b>119.05</b>	UNICOM <b>122.8 (CTAF) ①</b>
------------------------	---	---------------------------	---------------------------------



NC-3, 11 JUL 2024 to 08 AUG 2024

NC-3, 11 JUL 2024 to 08 AUG 2024

ELEV 684	<b>D</b> TDZE 659
----------	-------------------



CATEGORY	A	B	C	D
LPV DA		909- $\frac{3}{4}$	250 (300- $\frac{3}{4}$ )	
LNAV/VNAV DA		1150-1 $\frac{3}{8}$	491 (500-1 $\frac{1}{8}$ )	
LNAV MDA	1160-1	501 (500-1)	1160-1 $\frac{3}{8}$	501 (500-1 $\frac{1}{8}$ )
<b>C</b> CIRCLING	1220-1 536 (600-1)	1240-1 556 (600-1)	1440-2 $\frac{1}{4}$ 756 (800-2 $\frac{1}{4}$ )	1440-2 $\frac{1}{2}$ 756 (800-2 $\frac{1}{2}$ )

REIL Rws 7 and 25 ①  
MIRL Rws 7-25 and 12-30 ①