

WAAS CH 50233 W31A	APP CRS 314°	Rwy Idg TDZE Apt Elev	6200 5096 5096
--	------------------------	-----------------------------	---

RNAV (GPS) RWY 31

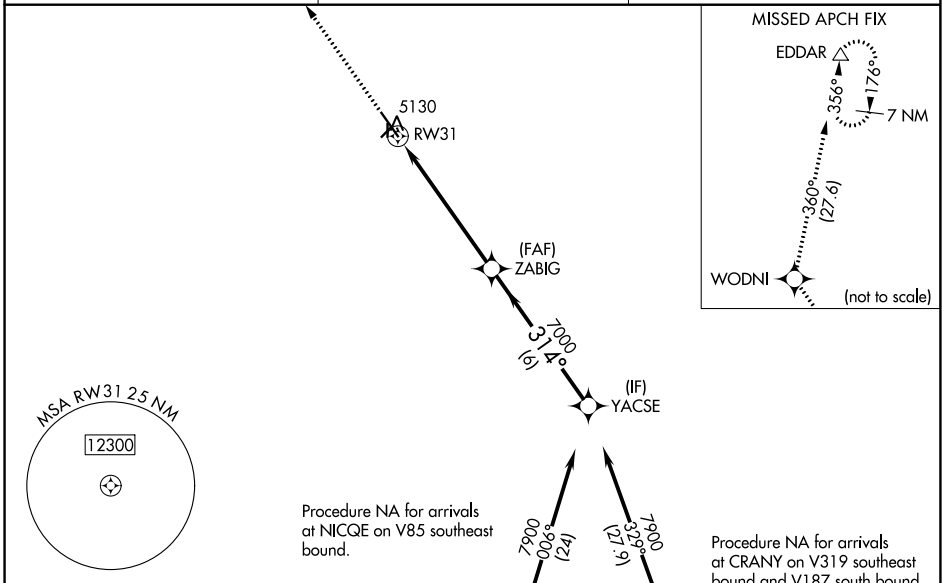
POWELL MUNI (POY)

RNP APCH.

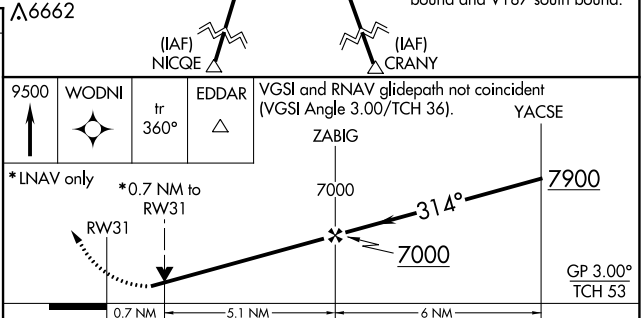
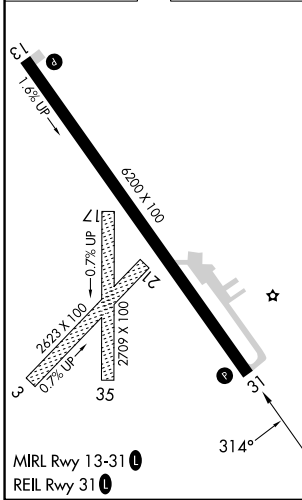
NA Circling NA to Rws 3, 17, 21 and 35. Baro-VNAV and VDP NA when using Cody altimeter setting. Rwy 31 helicopter visibility reduction below 3/4 SM NA. For uncompensated Baro-VNAV systems, LNAV/VNAV NA below -25°C or above 48°C. When local altimeter setting not received, use Cody altimeter setting and increase all DA 54 feet and all MDA 60 feet.

MISSED APPROACH: Climb to 9500 direct WODNI and on track 360° to EDDAR and hold.

AWOS-3 119.275	SALT LAKE CENTER 127.75 351.9	UNICOM 122.7 (CTAF) 0
--------------------------	---	---------------------------------



ELEV 5096	TDZE 5096
-----------	-----------



CATEGORY	A	B	C	D
LPV DA		5346-1	250 (300-1)	
LNAV/VNAV DA		5346-1	250 (300-1)	
LNAV MDA		5380-1	284 (300-1)	
CIRCLING	5500-1 404 (500-1)	5560-1 464 (500-1)	5560-1½ 464 (500-1½)	5660-2 564 (600-2)

NW-1, 11 JUL 2024 to 08 AUG 2024

NW-1, 11 JUL 2024 to 08 AUG 2024