

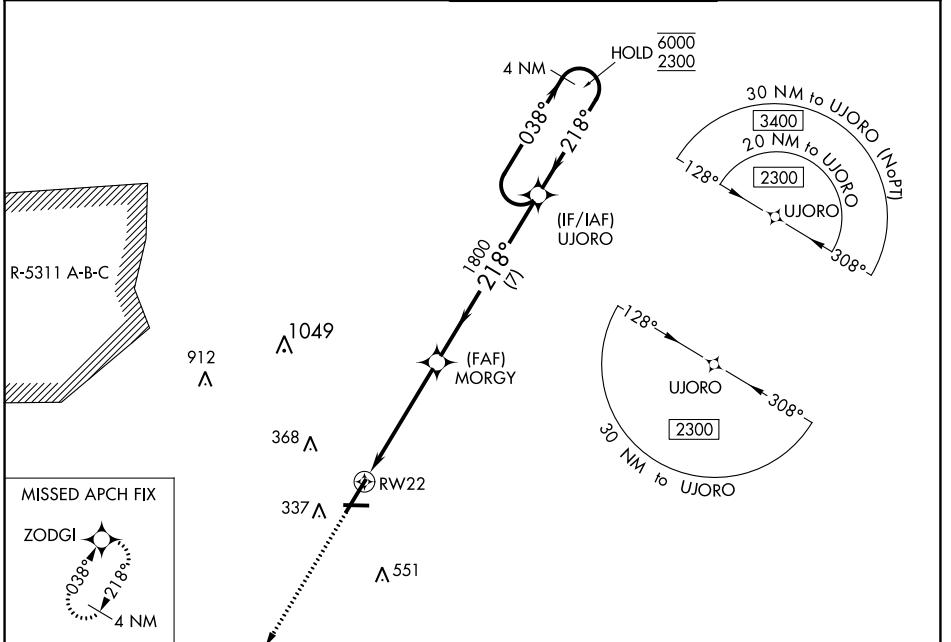
WAAS CH <b>45511</b> <b>W22A</b>	APP CRS <b>218°</b>	Rwy Idg TDZE <b>180</b> Apt Elev <b>189</b>	<b>6413</b>
--	------------------------	---	-------------

# RNAV (GPS) RWY 22

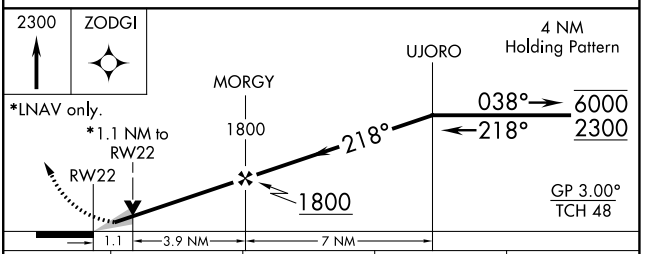
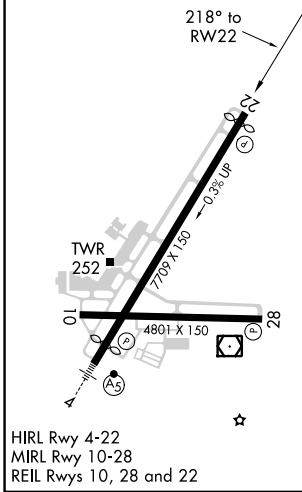
FAYETTEVILLE RGNL/GRANNIS FLD (FAY)

RNP APCH.	For uncompensated Baro-VNAV systems, LNAV/VNAV NA below -10°C or above 54°C.	MISSED APPROACH: Climb to 2300 direct ZODGI and hold.
-----------	--	---

ATIS <b>121.25</b>	FAYETTEVILLE APP CON <b>133.0 290.25</b>	FAYETTEVILLE TOWER <b>118.3 269.2</b>	GND CON <b>121.7 348.6</b>
-----------------------	---	--	-------------------------------



ELEV 189	<b>D</b>	TDZE 180
----------	----------	----------



CATEGORY	A	B	C	D
LPV DA		380- <sup>3</sup> / <sub>4</sub>	200 (200- <sup>3</sup> / <sub>4</sub> )	
LNAV/VNAV DA		437- <sup>3</sup> / <sub>4</sub>	257 (300- <sup>3</sup> / <sub>4</sub> )	
LNAV MDA		560-1	380 (400-1)	
<b>C</b> CIRCLING	640-1 451 (500-1)	660-1 471 (500-1)	860-2 671 (700-2)	860-2 <sup>1</sup> / <sub>4</sub> 671 (700-2 <sup>1</sup> / <sub>4</sub> )

SE-2, 11 JUL 2024 to 08 AUG 2024

SE-2, 11 JUL 2024 to 08 AUG 2024