

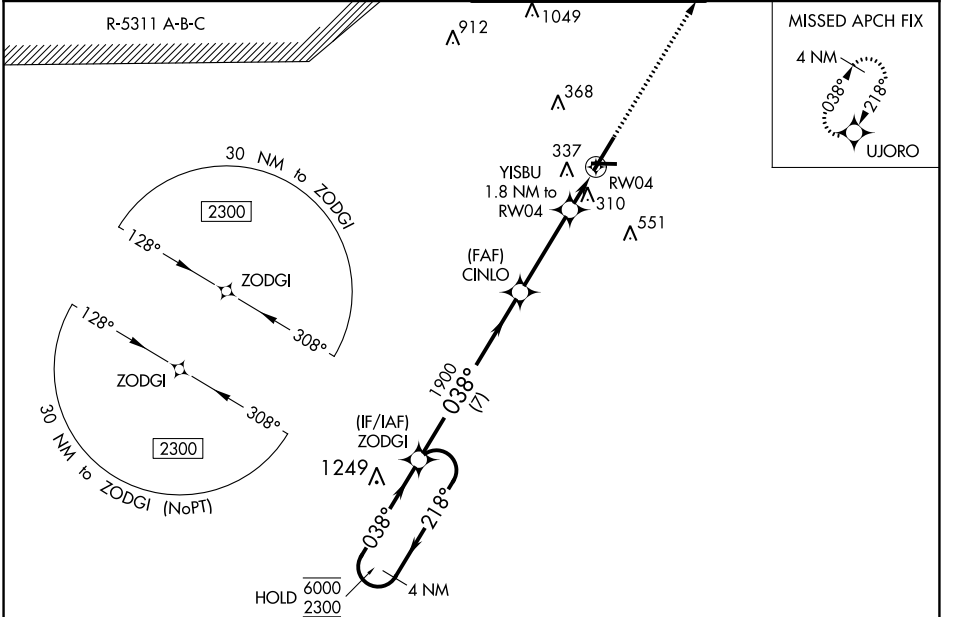
WAAS CH 50111 W04A	APP CRS 038°	Rwy Idg TDZE Apt Elev	6508 189 189
--	------------------------	-----------------------------	---

RNAV (GPS) RWY 4

FAYETTEVILLE RGNL/GRANNIS FLD (FAY)

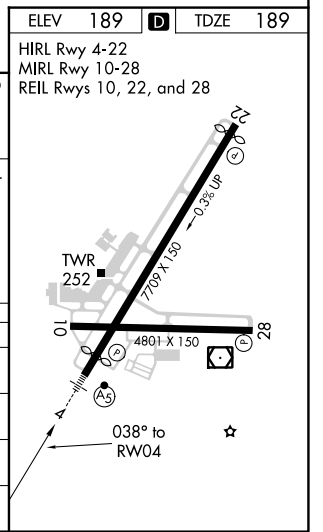
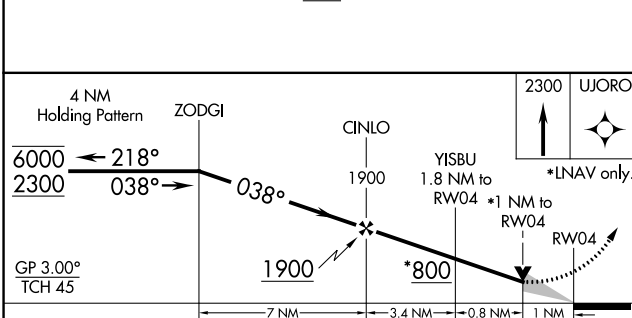
RNP APCH.	MALSR	MISSED APPROACH: Climb to 2300 direct UJORO and hold.
For uncompensated Baro-VNAV systems, LNAV/VNAV NA below -10° C or above 54°C. # RVR 1800 authorized with use of FD or AP or HUD to DA.		

ATIS 121.25	FAYETTEVILLE APP CON 133.0 290.25	FAYETTEVILLE TOWER 118.3 269.2	GND CON 121.7 348.6
-----------------------	---	--	-------------------------------



SE-2, 11 JUL 2024 to 08 AUG 2024

SE-2, 11 JUL 2024 to 08 AUG 2024



CATEGORY	A	B	C	D
LPV DA #		389/24	200 (200-½)	
LNAV/VNAV DA		588/35	399 (400-⅙)	
LNAV MDA		560/24	371 (400-½)	
CIRCLING	640-1	660-1	860-2	860-2¼
	451 (500-1)	471 (500-1)	671 (700-2)	671 (700-2¼)