


WAAS CH <b>61115</b> <b>W28A</b>	APP CRS <b>284°</b>	Rwy Idg <b>8204</b>
		TDZE <b>5459</b>
		Apt Elev <b>5516</b>


# RNAV (GPS) RWY 28

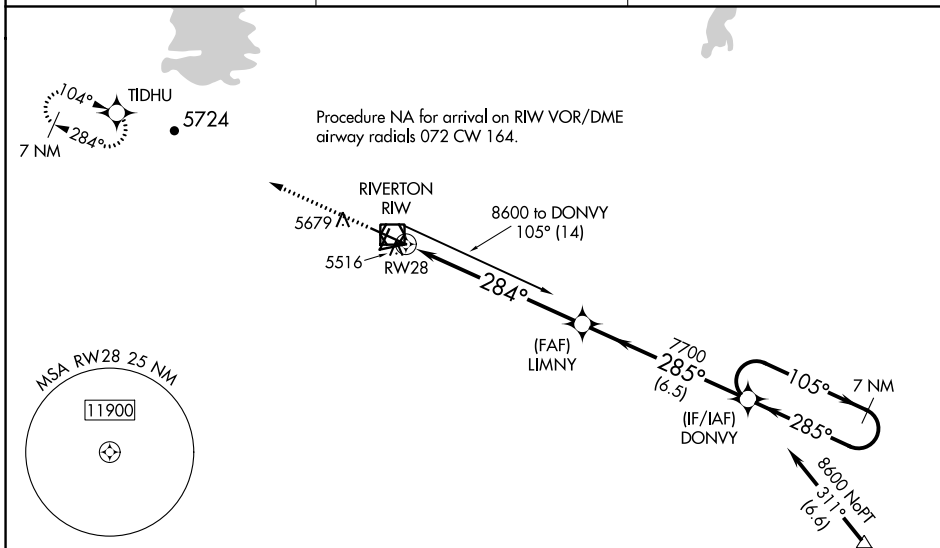
CENTRAL WYOMING RGNL (RIW)

RNP APCH - GPS.

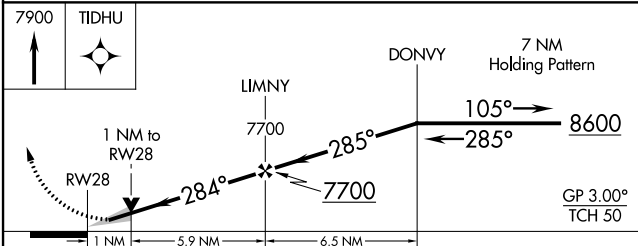
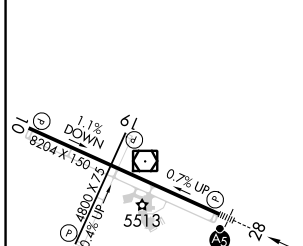
**⚠** Baro-VNAV and VDP NA when using Lander altimeter setting. For uncompensated Baro-VNAV systems, LNAV/VNAV NA below -27°C or above 48°C. For inop MALSR, increase LNAV/VNAV all Cats visibility to ½ mile and LNAV Cat C and D visibility to 1 mile. When local altimeter setting not received, use Lander altimeter setting: increase LPV DA to 5713 feet, LNAV/VNAV DA to 5763 and all visibilities ½ mile; increase all MDA 60 feet and LNAV Cat C and D visibility ½ mile. For inop MALSR, when using Lander altimeter setting, increase LPV all Cats visibility to ½ mile and LNAV/VNAV all Cats visibility to 1 mile.

MALSR  MISSED APPROACH: Climb to 7900 direct TIDHU and hold.


ASOS <b>121.425</b>	SALT LAKE CENTER <b>133.25 285.6</b>	UNICOM <b>122.8 (CTAF)</b> 
------------------------	-----------------------------------------	-----------------------------------------------------------------------------------------------------------------





ELEV 5516	<b>D</b>	TDZE 5459
-----------	----------	-----------



CATEGORY	A	B	C	D
LPV DA		5659-½	200 (200-½)	
LNAV/VNAV DA		5709-½	250 (200-½)	
LNAV MDA	5820-½	361 (400-½)	5820-⅝	361 (400-⅝)
<b>C</b> CIRCLING	6000-1	484 (500-1)	6000-1½	6120-2
			484 (500-1½)	604 (700-2)

REIL Rwy 1, 10, and 19 

MIRL Rwy 1-19 

HIRL Rwy 10-28 

NW-1, 11 JUL 2024 to 08 AUG 2024

NW-1, 11 JUL 2024 to 08 AUG 2024