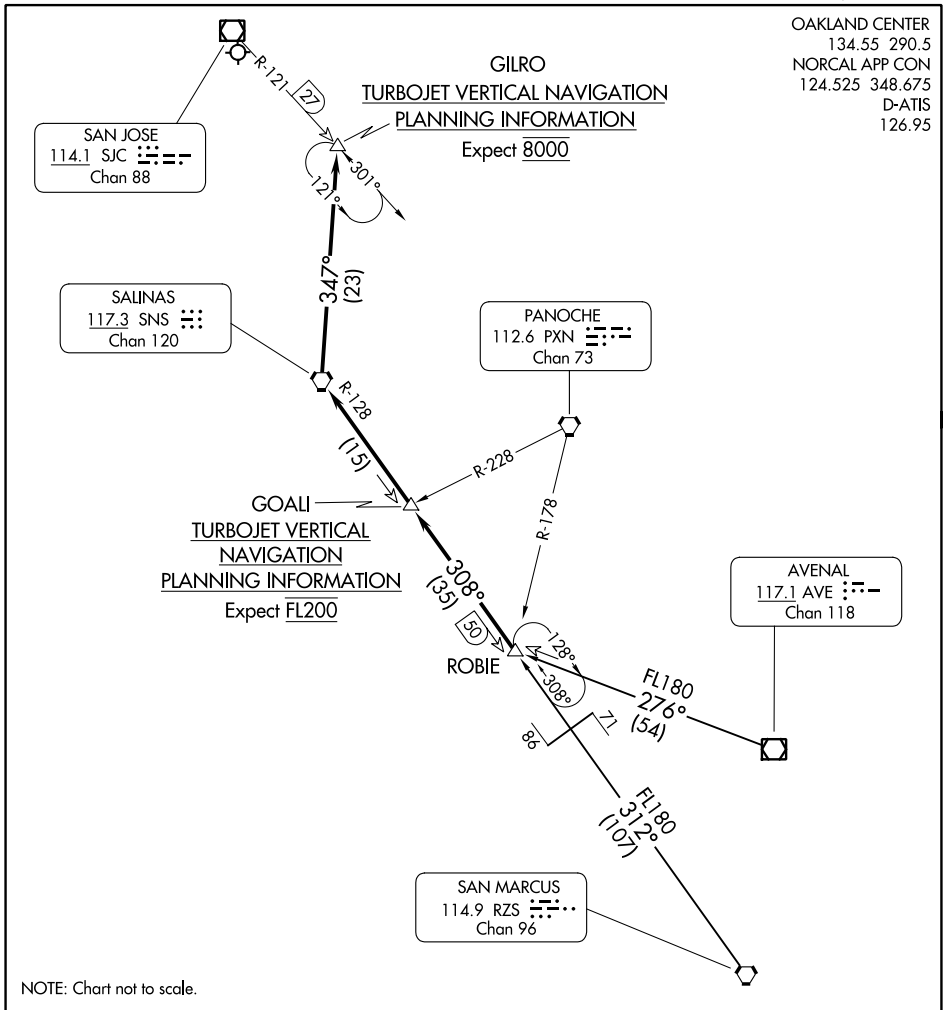


ROBIE FIVE ARRIVAL

OAKLAND CENTER
134.55 290.5
NORCAL APP CON
124.525 348.675
D-ATIS
126.95



SW-2, 11 JUL 2024 to 08 AUG 2024

SW-2, 11 JUL 2024 to 08 AUG 2024

NOTE: Chart not to scale.

ARRIVAL ROUTE DESCRIPTION

AVENAL TRANSITION (AVE.ROBIE5): From over AVE VOR/DME on AVE R-276 to ROBIE. Thence . . .

SAN MARCUS TRANSITION (RZS.ROBIE5): From over RZS VORTAC on RZS R-312 and SNS R-128 to ROBIE. Thence . . .

. . . From over ROBIE on SNS R-128 to SNS VORTAC. Then on SNS R-347 to GILRO. Expect the ILS RWY 30L approach.

FOR RUNWAY 12 OPERATIONS: Expect routing SNS direct SJC VOR/DME and RADAR vectors to final approach course.

ROBIE FIVE ARRIVAL