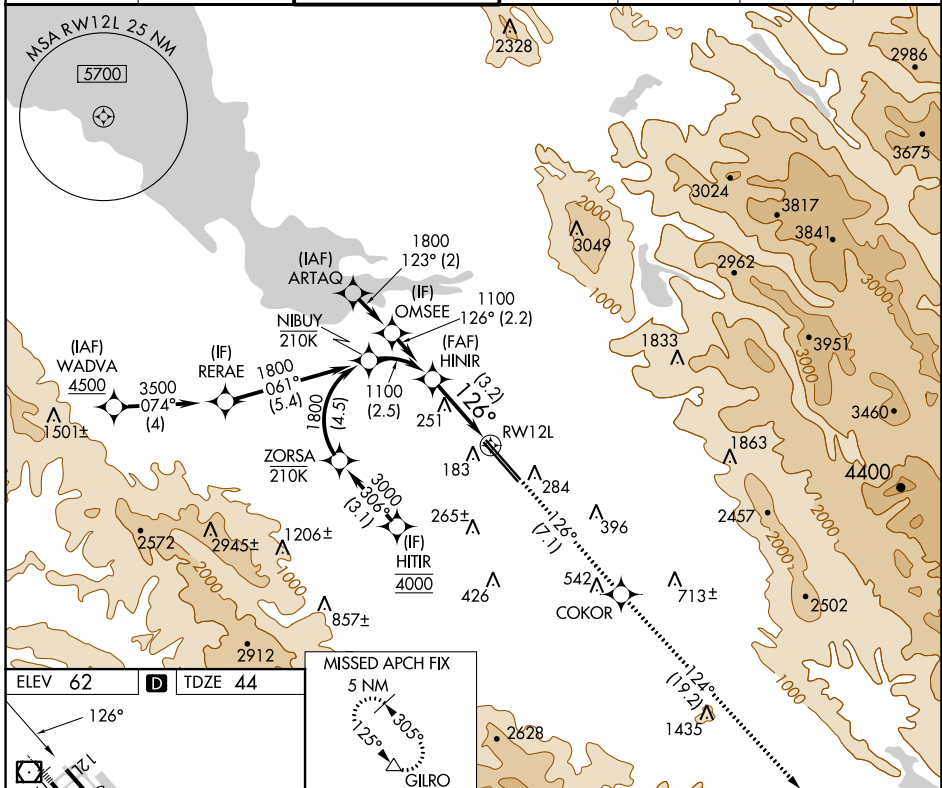


APP CRS <b>126°</b>	Rwy Idg <b>8831</b>
	TDZE <b>44</b>
	Apt Elev <b>62</b>

# RNAV (RNP) Z RWY 12L

NORMAN Y MINETA SAN JOSE INTL (SJC)

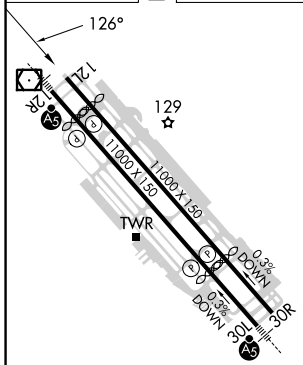
RNP AR APCH-GPS.			MISSED APPROACH: Climb to 4600 on track 126° to COKOR and track 124° to GILRO and hold.						
▼ For uncompensated Baro-VNAV systems, procedure NA below 0°C or above 54°C.			D-ATIS <b>126.95</b>	NORCAL APP CON <b>120.1 290.25</b>	SAN JOSE TOWER* <b>124.0 (CTAF) 0 257.6</b>	GND CON <b>121.7</b>	CLNC DEL <b>118.0</b>	CPDLC	UNICOM <b>122.95</b>



SW-2, 11 JUL 2024 to 08 AUG 2024

SW-2, 11 JUL 2024 to 08 AUG 2024

ELEV 62	<b>D</b>	TDZE 44
---------	----------	---------



HINIR 1100	VGSI and RNAV glidepath not coincident (VGSI Angle 3.00/TCH 70).	4600 ↑ tr 126°	COKOR ✧ tr 124°	GILRO △
GP 3.00° TCH 57 See planview for multiple IF locations. 3.2 NM				

CATEGORY	A	B	C	D
RNP 0.18 DA		400-1	356 (400-1)	
RNP 0.30 DA		451-1½	407 (400-1½)	

## AUTHORIZATION REQUIRED