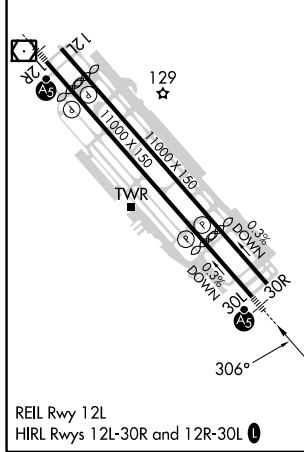
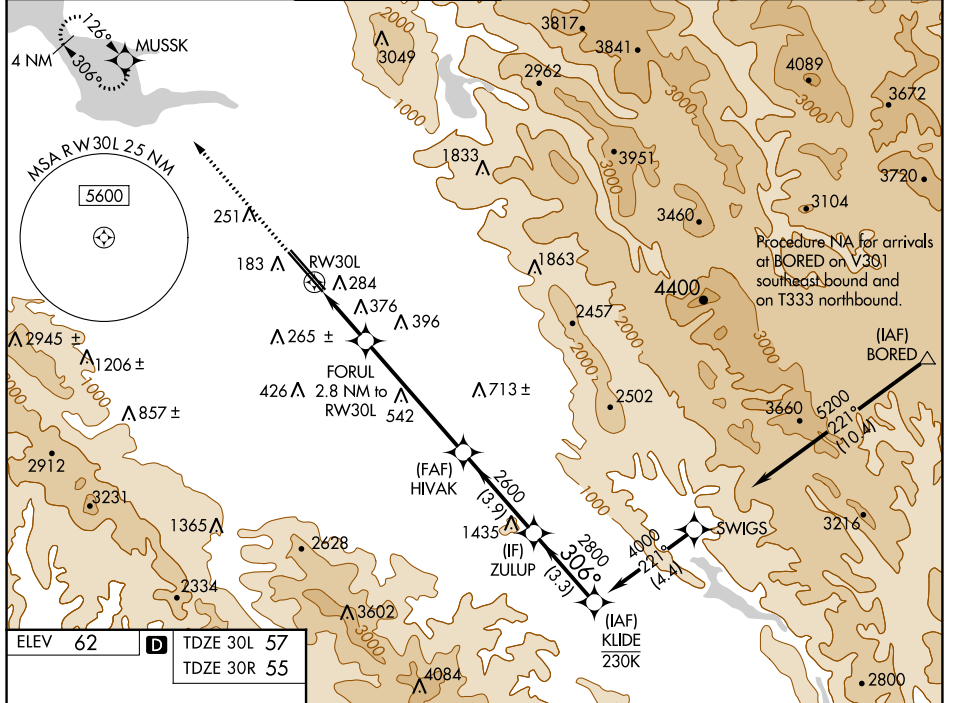


WAAS CH 97306 W30A	APP CRS 306°	Rwy ldg TDZE Apt Elev	30L 7614 57 62	30R 7597 55 62
--	------------------------	-----------------------------	--	--

RNAV (GPS) Y RWY 30L

NORMAN Y MINETA SAN JOSE INTL (SJC)

RNP APCH-GPS.				MALSR Rwy 30L	MISSED APPROACH: Climb to 2300 direct MUSSK and hold.	
▼ For uncompensated Baro-VNAV systems, LNAV/VNAV NA below 1°C or above 54°C. For inop ALS, increase LNAV/VNAV all Cats visibility to 1½ SM. * RVR 1800 authorized with use of FD or AP or HUD to DA.						
D-ATIS 126.95	NORCAL APP CON 120.1 290.25	SAN JOSE TOWER ★ 124.0 (CTAF) 257.6	GND CON 121.7	CLNC DEL 118.0	CPDLC	UNICOM 122.95



2300	MUSSK	VGSi and RNAV glidepath not coincident (VGSi Angle 3.00/TCH 70).	ZULUP	KLIDE
	FORUL 2.8 NM to RW30L		HIVAK 2600	4000
	1.6 NM to RW30L		2800	306°
			2600	
				GP 3.00° TCH 54
	1.6 NM	1.2 NM	5.3 NM	3.9 NM

CATEGORY	A	B	C	D
LPV DA*		257/24	200 (200-½)	
LNAV/VNAV DA		540/50	483 (500-1)	
LNAV MDA	640/24	583 (600-½)	640-1¼	583 (600-1¼)
SIDESTEP 30R	640-1 585 (600-1)			

SW-2, 11 JUL 2024 to 08 AUG 2024

SW-2, 11 JUL 2024 to 08 AUG 2024