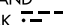


(SJC3.MOONY) 23334

SAN JOSE THREE DEPARTURE

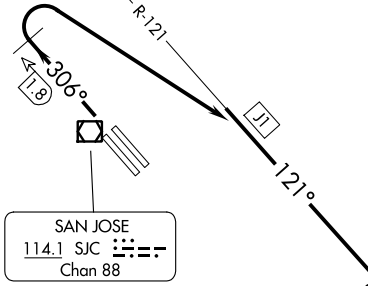
AL-693 (FAA)


NORMAN Y MINETA SAN JOSE INTL (SJC)
SAN JOSE, CALIFORNIA

OAKLAND
116.8 OAK 
Chan 115

TOP ALTITUDE:
5000

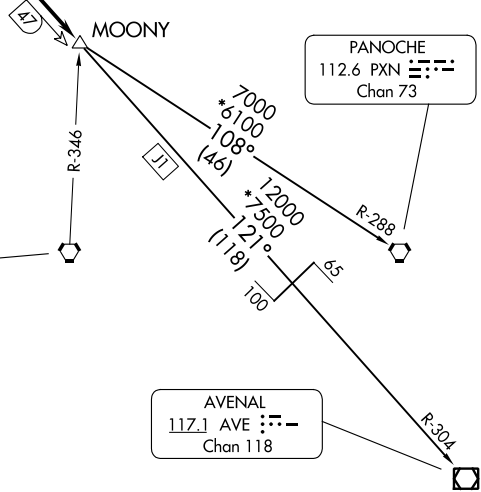
- D-ATIS 126.95
- CLNC DEL 118.0
- CPDLC
- GND CON 121.7
- SAN JOSE TOWER* 124.0 257.6
- NORCAL DEP CON 121.3 270.35




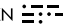
SAN JOSE
114.1 SJC 
Chan 88


TAKEOFF MINIMUMS

Rwys 12L/R: NA-operational.
Rwys 30L/R: Standard with a minimum climb of 480' per NM to 4000.



SALINAS
117.3 SNS 
Chan 120

PANOCHED
112.6 PXN 
Chan 73

AVENAL
117.1 AVE 
Chan 118

NOTE: DME and RADAR required.

NOTE: Chart not to scale.

DEPARTURE ROUTE DESCRIPTION

TAKEOFF RUNWAYS 30L/R: Climb heading 306° to SJC 1.8 DME NW of SJC VOR/DME, then turn right to intercept and proceed on OAK R-121 to MOONY INT, thence. . . .
. . . .on (transition) or (assigned route). Maintain 5000, expect clearance to filed altitude ten minutes after departure.

AVENAL TRANSITION (SJC3.AVE): From over MOONY INT on OAK R-121 and AVE R-304 to AVE VOR/DME.

PANOCHED TRANSITION (SJC3.PXN): From over MOONY INT on PXN R-288 to PXN VORTAC.

SAN JOSE THREE DEPARTURE

(SJC3.MOONY) 15AUG19

SAN JOSE, CALIFORNIA
NORMAN Y MINETA SAN JOSE INTL (SJC)

SW-2, 11 JUL 2024 to 08 AUG 2024

SW-2, 11 JUL 2024 to 08 AUG 2024