

(HKY3.HKY) 24081

AL-706 (FAA)

# HICKORY THREE DEPARTURE (OBSTACLE)

HICKORY RGNL (HKY)  
HICKORY, NORTH CAROLINA

ATLANTA CENTER

125.15 263.0  
CLNC DEL (When twr closed)

124.25  
HICKORY TOWER ★

128.15 (CTAF)

GND CON

121.7

ASOS

118.325

LONDON  
116.55 LOZ  
Chan 112 (Y)

BLUEFIELD  
115.05 BLF  
Chan 97 (Y)

GLADE SPRING  
115.55 GZG  
Chan 102 (Y)

HOLSTON MOUNTAIN  
114.6 HMV  
Chan 93

BECKLEY  
117.7 BKW  
Chan 124

PULASKI  
116.8 PSK  
Chan 115

ROANOKE  
109.4 ROA  
Chan 31

LYNCHBURG  
109.2 LYH  
Chan 29

SOUTH BOSTON  
110.4 SBV  
Chan 41

BARRETT'S MOUNTAIN  
113.75 BZM  
Chan 84 (Y)

DANVILLE  
113.1 DAN

GREENSBORO  
116.2 GSO  
Chan 109

RALEIGH-DURHAM  
117.2 RDU  
Chan 119

VOLUNTEER  
116.4 VXV  
Chan 111

SNOWBIRD  
108.8 SOT  
Chan 25

LIBERTY  
113.0 LIB  
Chan 77

SUGARLOAF MOUNTAIN  
112.2 SUG  
Chan 59

SPARTANBURG  
115.7 SPA  
Chan 104

CHARLOTTE  
115.0 CLT  
Chan 97

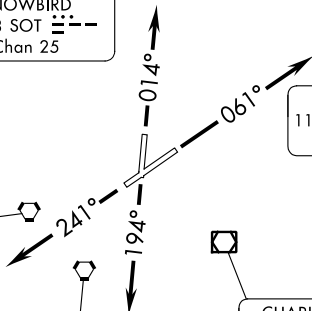
SANDHILLS  
111.8 SDZ  
Chan 55

ELECTRIC CITY  
108.6 ELW  
Chan 23

COLLIERS  
113.9 IRQ  
Chan 86

COLUMBIA  
114.7 CAE  
Chan 94

FLORENCE  
115.2 FLO  
Chan 99



### TAKEOFF MINIMUMS

Rwy 1, 6, 24: Standard with minimum climb of 340' per NM to 4000.

Rwy 19: Standard with minimum climb of 286' per NM to 4000.

(CONTINUED ON FOLLOWING PAGE)

NOTE: Chart not to scale.

# HICKORY THREE DEPARTURE (OBSTACLE)

HICKORY, NORTH CAROLINA  
HICKORY RGNL (HKY)

(HKY3.HKY) 09FEB12

SE-2, 11 JUL 2024 to 08 AUG 2024

SE-2, 11 JUL 2024 to 08 AUG 2024