


WAAS CH 61110 W32A	APP CRS 319°	Rwy Idg TDZE Apt Elev	8101 750 755
--	------------------------	-----------------------------	---

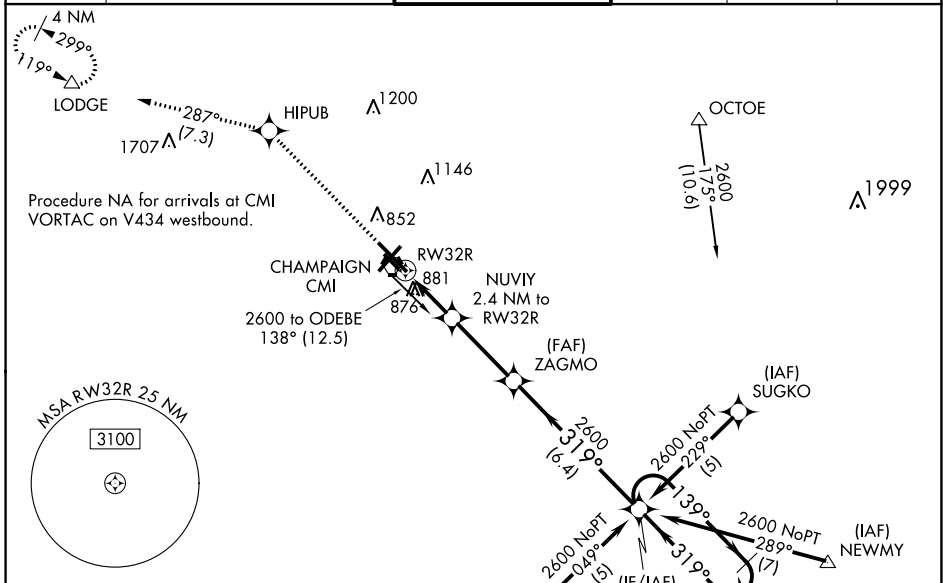
RNAV (GPS) RWY 32R

UNIVERSITY OF ILLINOIS/WILLARD (CMI)

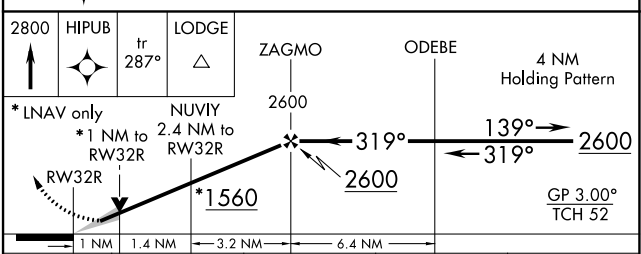
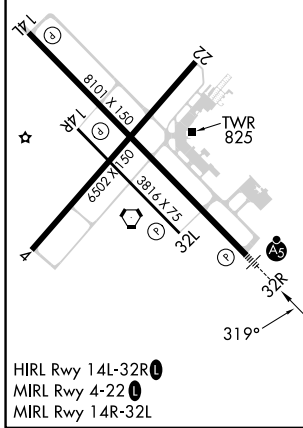
▲ For uncompensated Baro-VNAV systems, LNAV/VNAV NA below -19° C (-2° F) or above 54° C (130° F). DME/DME RNP-0.3 NA. Baro-VNAV and VDP NA when using Rantoul altimeter setting. When local altimeter setting not received, use Rantoul altimeter setting and increase all DA 41 feet, all MDA 60 feet; increase LNAV Cat C/D visibility to RVR 5500. For inoperative MALS, when using local or Rantoul altimeter setting, increase LNAV Cat C/D visibility to 1/2 miles.

MALS

MISSED APPROACH:
 Climb to 2800 direct HIPUB and on track 287° to LODGE and hold.

ATIS 124.85	CHAMPAIGN APP CON * 121.35 285.65 (319°-138°) 132.85 290.225 (139°-318°)	CHAMPAIGN TOWER * 120.4 (CTAF) 0 229.4	GND CON 121.8	CLNC DEL 128.75	UNICOM 122.95
-----------------------	--	--	-------------------------	---------------------------	-------------------------



ELEV 755	D	TDZE 750
----------	----------	----------



CATEGORY	A	B	C	D
LPV DA		1000/24	250 (300-1/2)	
LNAV/VNAV DA		1159/50	409 (500-1)	
LNAV MDA	1200/24	450 (500-1/2)	1200/45	450 (500-3/4)
C CIRCLING	1240-1	485 (500-1)	1500-2 1/4 745 (800-2 1/4)	1500-2 1/2 745 (800-2 1/2)

EC-3, 11 JUL 2024 to 08 AUG 2024

EC-3, 11 JUL 2024 to 08 AUG 2024