

ALPENA, MICHIGAN

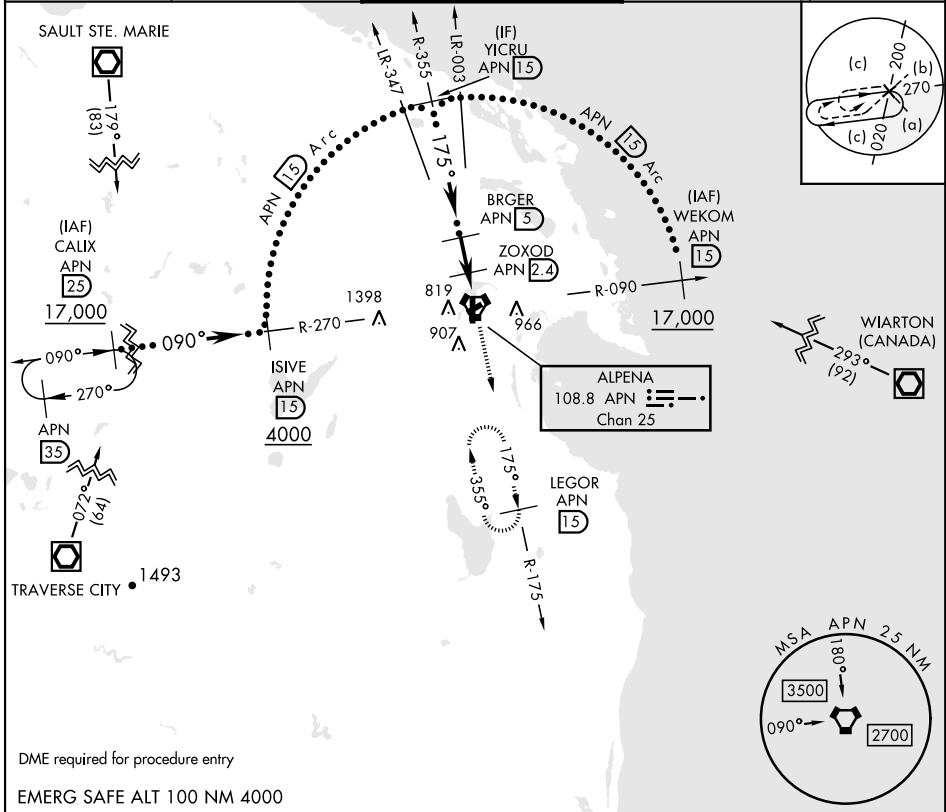
# HI-TACAN RWY 19

VORTAC APN <b>108.8</b> Chan <b>25</b>	APCH CRS <b>175°</b>	Rwy Idg TDZE Arprt Elev <b>9001</b> <b>683</b> <b>690</b>	AL-718 [USAF]	ALPENA COUNTY RGNL (KAPN)
--	-------------------------	--	---------------	---------------------------

DME required.

MISSED APPROACH: Climb to 5000 on APN R-175 to LEGOR (15 DME) and hold, continue climb in hold to 5000.

ATIS ★ <b>120.675 327.05</b>	ALPENA APP CON <b>128.425 379.3</b>	ALPENA TOWER ★ <b>121.35 (CTAF) 0 318.1</b>	GND CON <b>121.9 275.8</b>	UNICOM <b>122.95</b>
---------------------------------	--	--	-------------------------------	-------------------------



EC-1, 11 JUL 2024 to 08 AUG 2024

EC-1, 11 JUL 2024 to 08 AUG 2024

DME required for procedure entry

EMERG SAFE ALT 100 NM 4000

YICRU R-355 <b>15</b> 2800	VGSi and descent angles not coincident (VGSi Angle 3.00/TCH 39)		5000	LEGOR APN <b>15</b>	ELEV 690	TDZE 683
BRGER <b>5</b>		ZOXOD <b>2.4</b>	JUDBI <b>1</b>	VORTAC		
3.23° TCH 55		2300	1380	2.6 NM	1.4 NM	6 NM
CATEGORY	C	D	E			
S-19	1140-1 3/8	457 (500-13%)				
CIRCLING	1220-1 1/2 530 (600-1 1/2)	1280-2 590 (600-2)	1320-2 1/4 630 (700-2 1/4)			

ALPENA, MICHIGAN  
Amdt 5C 13AUG20

45°05'N-83°34'W

ALPENA COUNTY RGNL (KAPN)

# HI-TACAN RWY 19