

ALPENA, MICHIGAN

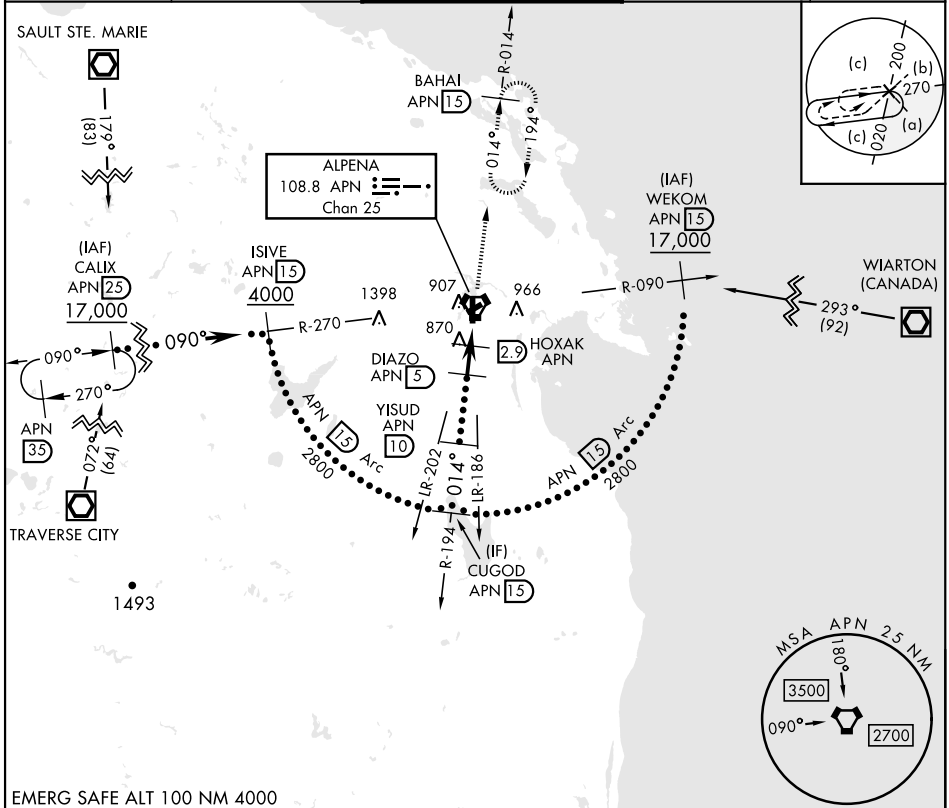
HI-VOR or TACAN RWY 1

VORTAC APN 108.8 Chan 25	APCH CRS 014°	Rwy Ldg TDZE Arprt Elev 9001 685 690	AL-718 [USAF]	ALPENA COUNTY RGNL (KAPN)
--	-------------------------	--	---------------	---------------------------

DME required. **MALS** MISSED APPROACH: Climb to 5000 on APN R-014 to BAHAI 15 DME and hold, continue climb in hold to 5000.

▼ *When ALS inop, increase vis to 1 3/8.

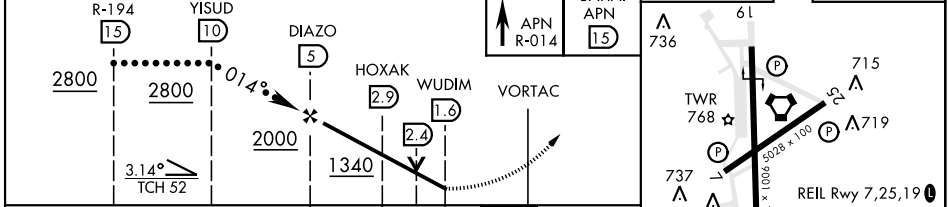
ATIS ★ 120.675 327.05	ALPENA APP CON 128.425 379.3	ALPENA TOWER ★ 121.35 (CTAF) 0 318.1	GND CON 121.9 275.8	UNICOM 122.95
---------------------------------	--	--	-------------------------------	-------------------------



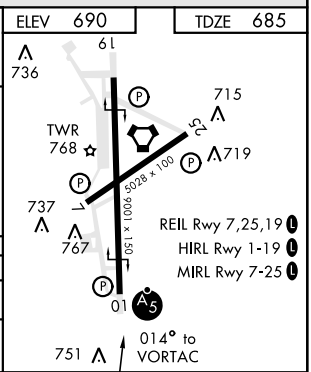
EC-1, 11 JUL 2024 to 08 AUG 2024

EC-1, 11 JUL 2024 to 08 AUG 2024

EMERG SAFE ALT 100 NM 4000



CATEGORY	C	D	E
S-1 *	1140-7/8	455 (500-7/8)	
CIRCLING	1220-1 1/2 530 (600-1 1/2)	1280-2 590 (600-2)	1320-2 1/4 630 (700-2 1/4)



ALPENA, MICHIGAN 45°05'N - 83°34'W ALPENA COUNTY RGNL (KAPN)

HI-VOR or TACAN RWY 1