

MAYPORT, FLORIDA

COPTER RNAV (GPS) RWY 5

WAAS CH 84778 W05A	APCH CRS 049°	Rwy ldg TDZE Arprt Elev	8001 12 15
--------------------------	------------------	-------------------------------	------------------

AL-722 (USN)

MAYPORT NS (ADM DAVID L MC DONALD FLD) (KNRB)

V * Circling not authorized at night when the VGSI is inop, unless the St. Johns River is clear of vessels from the mouth of Haulover Creek to St. Johns Point. ATC will advise aircraft on final approach if a conflict is present and coordinate a missed approach as required. Visibility Reduction by Helicopters NA.

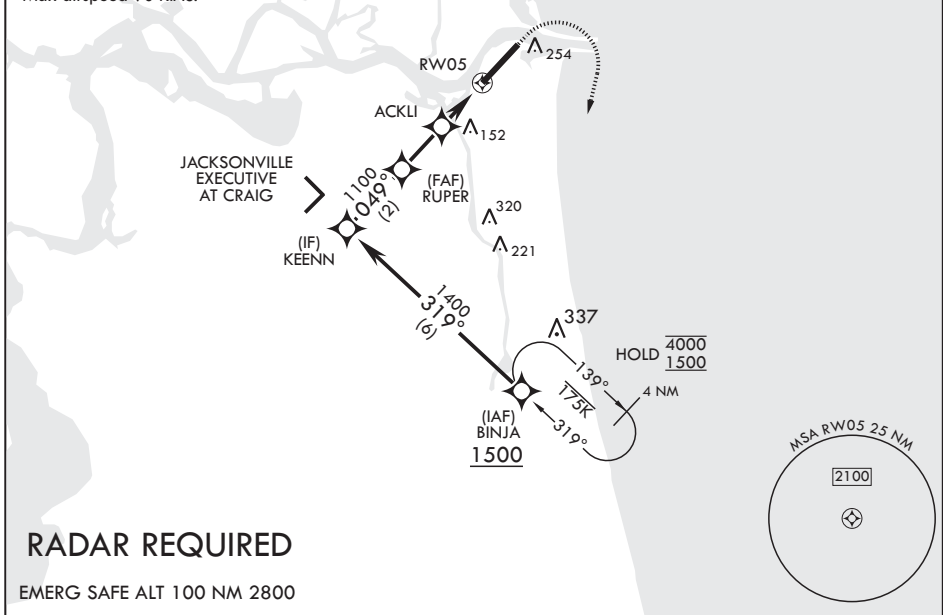
MISSED APPROACH: Climb to 600 then climbing right turn to 1500 direct BINJA and hold.

ATIS ★ 236.775	JACKSONVILLE APP CON/DEP CON 124.9 308.4	TOWER ★ 118.75 239.3	GND CON 126.5 233.7	ASR/PAR
-------------------	---	-------------------------	------------------------	---------

RNP APCH

For uncompensated Baro-VNAV systems, LNAV/VNAV NA below -15°C or above 54°C.

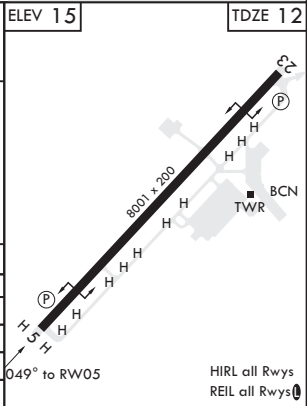
Max airspeed 90 KIAS.



RADAR REQUIRED

EMERG SAFE ALT 100 NM 2800

BINJA		VGSI and RNAV glidepath not coincident (VGSI Angle 3.00/TCH 48).		600	1500	BINJA	ELEV 15	TDZE 12	
1500		319°		KEENN		1400		049°	
GP 3.30°		TCH 48		RUPER		1100		580	
ACKLI		RWY 5		1.5 NM		1.5 NM			
CATEGORY	COPTER								
LPV DA	212-3/4	200	(200-3/4)						
LNAV/VNAV DA	400-1 1/8	388	(400-1 1/8)						
LNAV MDA	400-1	388	(400-1)						
C CIRCLING*	560-1	545	(600-1)						



HIRL all Rwys
REIL all Rwys

SE-3, 11 JUL 2024 to 08 AUG 2024

SE-3, 11 JUL 2024 to 08 AUG 2024

MAYPORT, FLORIDA

30°23'N - 81°25'W MAYPORT NS (ADM DAVID L MC DONALD FLD) (KNRB)

Orig 24MAR22
TERPS

COPTER RNAV (GPS) RWY 5