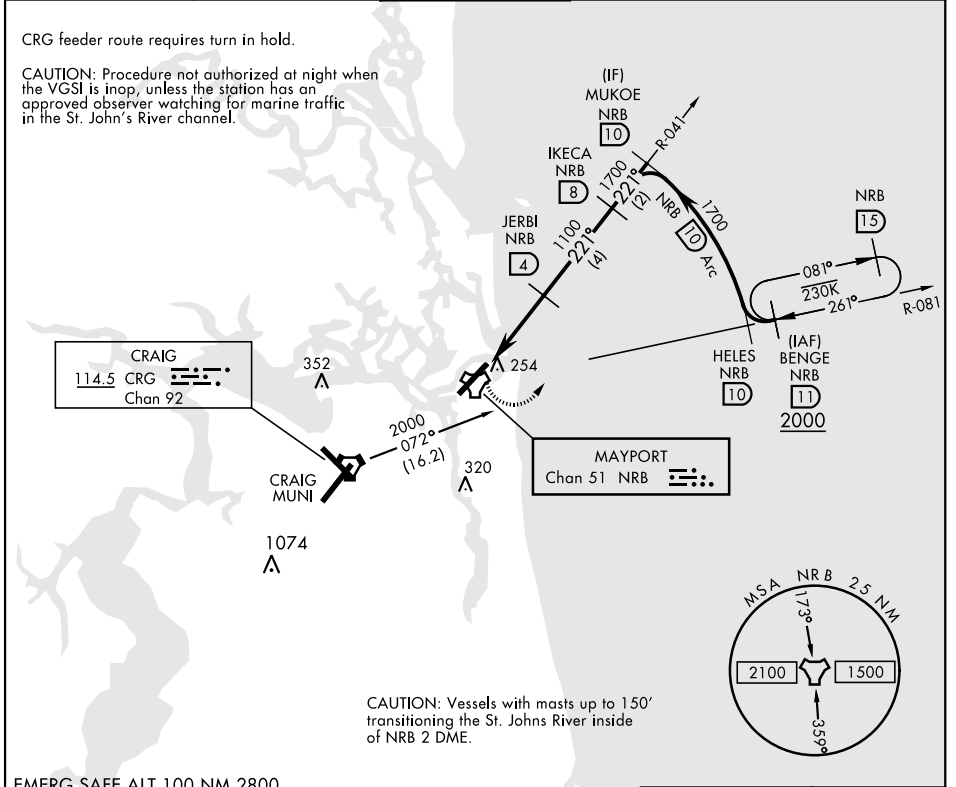


TACAN Y RWY 23

TACAN NRB Chan 51	APCH CRS 221°	Rwy Idg TDZE Arpt Elev 8001 15 15	AL-722 [USN] MAYPORT NS (ADM DAVID L. MC DONALD FLD) (KNRB)
-----------------------------	-------------------------	---	--

▼ Visibility reduction by helicopters NA. MISSED APPROACH: Climbing left turn to 2000 via NRB TACAN R-081 to BENG E and hold.

ATIS ★ 236.775	JACKSONVILLE APP CON 124.9 308.4	TOWER ★ 118.75 239.30	GND CON 126.5 233.7	ASR/PAR
--------------------------	--	---------------------------------	-------------------------------	---------



SE-3, 11 JUL 2024 to 08 AUG 2024

SE-3, 11 JUL 2024 to 08 AUG 2024

EMERG SAFE ALT 100 NM 2800

2000 NRB R-081	BENG NRB 11	IKECA 8	MUKOE 10
----------------	-------------	---------	----------

CATEGORY	A	B	C	D
S-23	520-1 505 (600-1)	520-1½ 505 (600-1½)	560-1½ 545 (600-1½)	620-2 605 (700-2)
CIRCLING	560-1 545 (600-1)	560-1½ 545 (600-1½)	620-2 605 (700-2)	

REIL Rwy 5-23
HIRL Rwy 5-23

MAYPORT, FLORIDA 30°23'N-81°25'W MAYPORT NS (ADM DAVID L. MC DONALD FLD) (KNRB)

Amtd 5 07OCT21

TACAN Y RWY 23