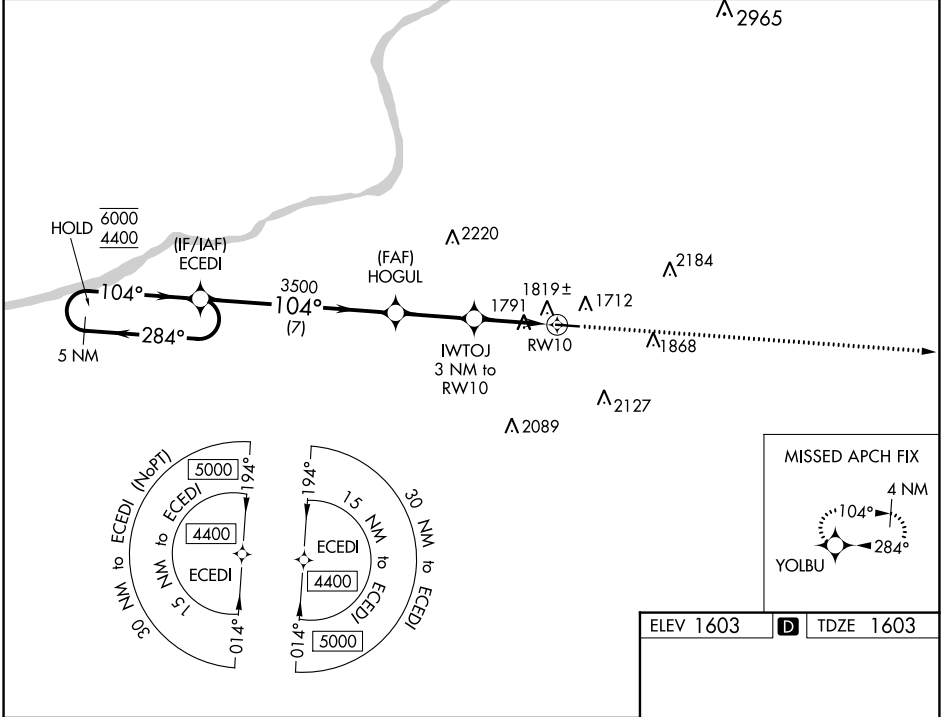


WAAS CH 86240 W10A	APP CRS 104°	Rwy Idg TDZE Apt Elev	4801 1603 1603
--	------------------------	-----------------------------	---

RNAV (GPS) RWY 10

HAZLETON RGNL (HZL)

RNP APCH.		MISSED APPROACH: Climb to 4600 direct YOLBU and hold.	
AWOS-3 119.975	WILKES-BARRE APP CON 126.3 256.7	CLNC DEL 121.7	UNICOM 123.0 (CTAF) 0



NE-4, 11 JUL 2024 to 08 AUG 2024

NE-4, 11 JUL 2024 to 08 AUG 2024

5 NM Holding Pattern		VGSi and RNAV glidepath not coincident (VGSi Angle 3.50/TCH 46).		ELEV 1603	TDZE 1603
GP 3.00° TCH 56		*LNAV only.		YOLBU	
7 NM		2.8 NM	1.6	1.4	
CATEGORY	A	B	C	D	
LPV DA	2059-1 $\frac{3}{8}$		456 (500-1 $\frac{3}{8}$)		
LNNAV/VNAV DA	2097-1 $\frac{3}{8}$		494 (500-1 $\frac{3}{8}$)		
LNNAV MDA	2080-1	477 (500-1)	2080-1 $\frac{3}{8}$	477 (500-1 $\frac{3}{8}$)	
CIRCLING	2140-1	2400-1	2480-2 $\frac{1}{2}$	2520-3	
	537 (600-1)	797 (800-1)	877 (900-2 $\frac{1}{2}$)	917 (1000-3)	
				REIL Rwy 10 0	MIRL Rwy 10-28 0