

WAAS CH <b>50140</b> <b>W28A</b>	APP CRS <b>284°</b>	Rwy Idg TDZE Apt Elev	<b>4898</b> <b>1603</b> <b>1603</b>
--	------------------------	-----------------------------	---

# RNAV (GPS) RWY 28

HAZLETON RGNL (HZL)

RNP APCH.

**▼** Rwy 28 helicopter visibility reduction below 3/4 SM NA. Inop table does not apply to LPV all Cats and LNAV Cats A/B. For uncompensated Baro-VNAV systems, LNAV/VNAV NA below -18°C or above 54°C.

MALS



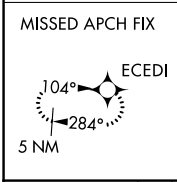
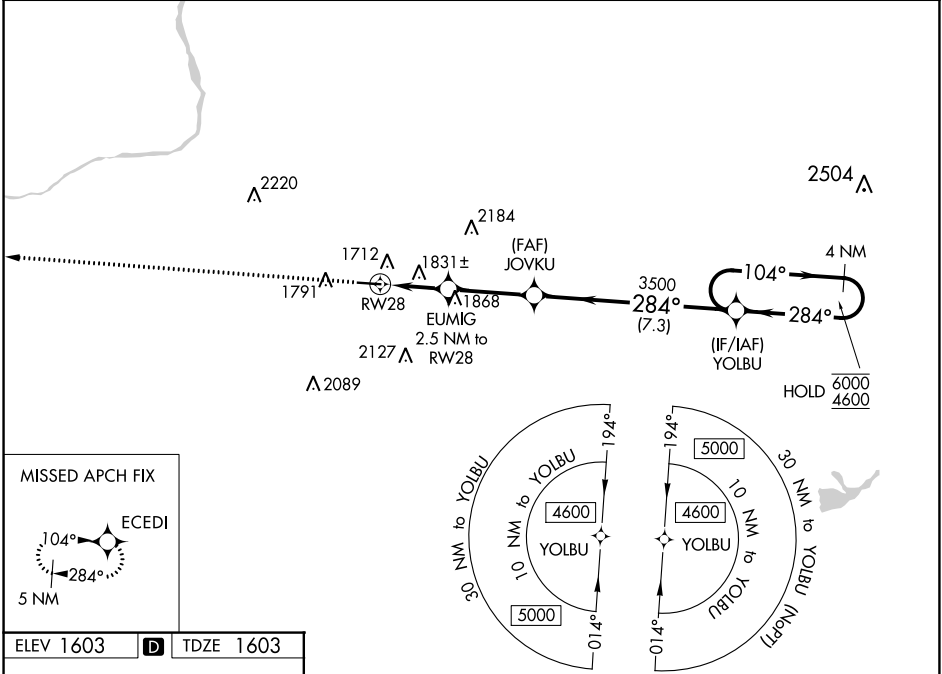
MISSED APPROACH:  
Climb to 4400 direct ECEDI and hold.

AWOS-3  
**119.975**

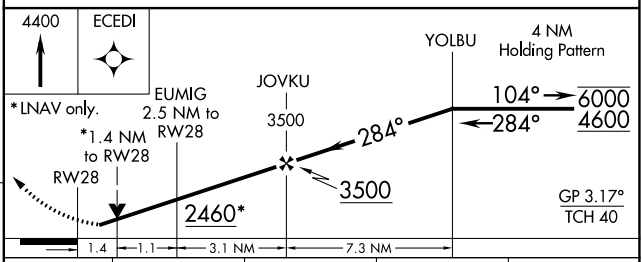
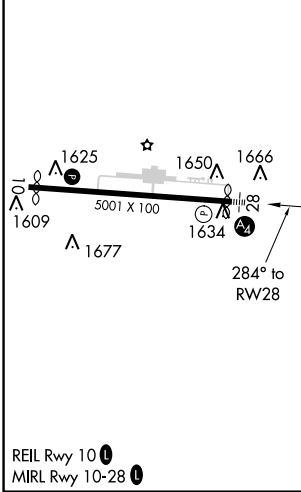
WILKES-BARRE APP CON  
**126.3 256.7**

CLNC DEL  
**121.7**

UNICOM  
**123.0 (CTAF) 0**



ELEV 1603 **D** TDZE 1603



CATEGORY	A	B	C	D
LPV DA	1978-1		375 (400-1)	
LNAV/VNAV DA	2143-1¼		540 (600-1¼)	
LNAV MDA	2100-1	497 (500-1)	2100-1½	497 (500-1½)
<b>C</b> CIRCLING	2140-1 537 (600-1)	2400-1 797 (800-1)	2480-2½ 877 (900-2½)	2520-3 917 (1000-3)

NE-4, 11 JUL 2024 to 08 AUG 2024

NE-4, 11 JUL 2024 to 08 AUG 2024