

WAAS CH <b>40402</b> <b>W17A</b>	APP CRS <b>172°</b>	Rwy Idg TDZE <b>234</b> Apt Elev <b>234</b>	<b>11759</b>
--	------------------------	---	--------------

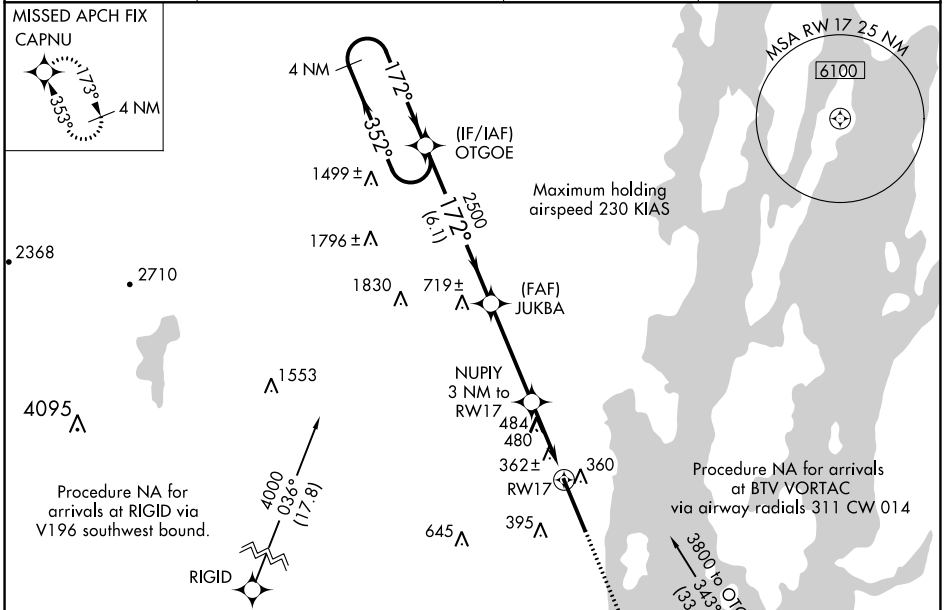
# RNAV (GPS) RWY 17

PLATTSBURGH INTL (PBG)

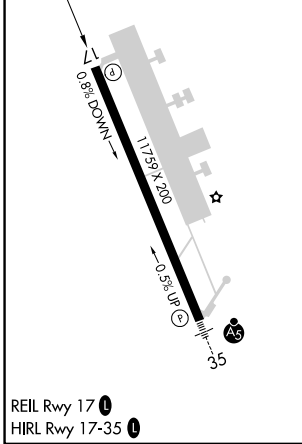
**NA** When local altimeter setting not received, use Patrick Leahy Burlington Intl altimeter setting and increase all DA 54 feet, all MDA 60 feet, LPV all Cats visibility ¼ mile, LNAV/VNAV all Cats visibility ¼ mile, LNAV Cats C, D and E visibility ¼ mile and Circling Cat C/D visibility ¼ mile. VDP NA when using Patrick Leahy Burlington Intl altimeter setting. Baro-VNAV NA. DME/DME RNP-0.3 NA. Helicopter visibility reduction below ¾ SM NA.

**MISSED APPROACH:** Climb to 3100 direct CAPNU and hold.

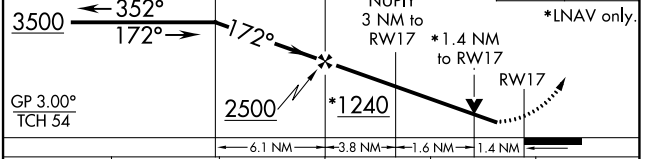
ASOS <b>132.225</b>	BURLINGTON APP CON * <b>121.1 278.8</b>	CLNC DEL <b>121.85</b>	UNICOM <b>122.7 (CTAF) 0</b>
------------------------	--	---------------------------	---------------------------------



ELEV	<b>234</b>	TDZE	<b>234</b>
------	------------	------	------------



4 NM Holding Pattern	OTGOE	JUKBA	NUPIY 3 NM to RWY 17	RWY 17
----------------------	-------	-------	----------------------	--------



CATEGORY	A	B	C	D	E
LPV DA		561-1		327 (400-1)	
LNAV/VNAV DA		706-1 5/8		472 (500-1%)	
LNAV MDA	740-1	506 (600-1)	740-1 3/8	506 (600-1%)	
CIRCLING	740-1	506 (600-1)	800-1 1/2	960-2 1/4	1100-3
			566 (600-1 1/2)	726 (800-2 1/4)	866 (900-3)

NE-2, 11 JUL 2024 to 08 AUG 2024

NE-2, 11 JUL 2024 to 08 AUG 2024