

WAAS CH <b>78003</b> W35A	APP CRS <b>353°</b>	Rwy Idg TDZE <b>177</b> Apt Elev <b>234</b>	<b>11759</b>
---------------------------------	------------------------	---	--------------

# RNAV (GPS) RWY 35

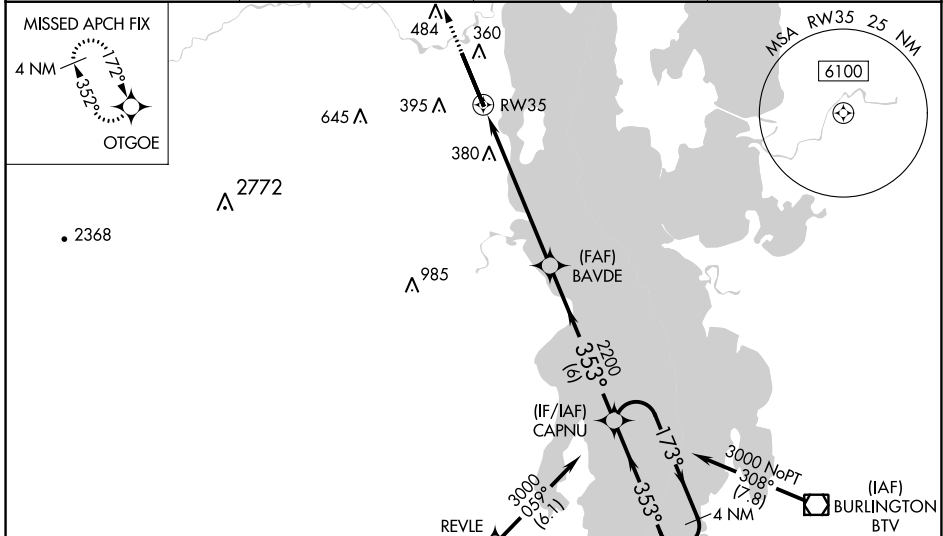
PLATTSBURGH INTL (PBG)

**⚠** For uncompensated Baro-VNAV systems, LNAV/VNAV NA below -18°C (0°F) or above 54°C (130°F). DME/DME RNP-0.3 NA. For inop MALSR, increase LPV and LNAV/VNAV all Cats visibility to ¾ mile. For inop MALSR when using Burlington altimeter setting, increase LPV and LNAV/VNAV all Cats visibility to 1 mile. When local altimeter setting not received, use Burlington altimeter setting and increase all DA 54 feet and all MDA 60 feet; increase LPV and LNAV/VNAV all Cats visibility to ¾ mile, LNAV Cats C, D visibility to 1¼ mile, and increase Circling Cats C/D visibility ¼ mile. VDP and Baro-VNAV NA when using Burlington Intl altimeter setting.

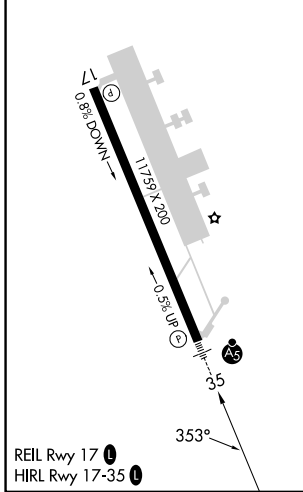
**MALSR**

**MISSED APPROACH:**  
Climb to 3500 direct OTGOE and hold, continue climb-in-hold to 3500.

ASOS <b>132.225</b>	BURLINGTON APP CON ★ <b>121.1 278.8</b>	CINC DEL <b>121.85</b>	UNICOM <b>122.7 (CTAF) 0</b>
------------------------	--	---------------------------	---------------------------------

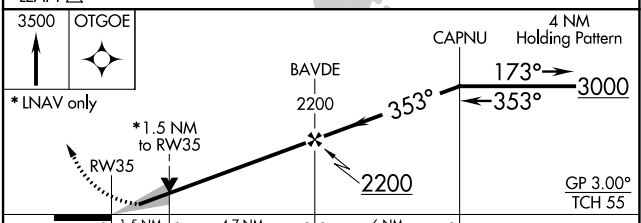


ELEV 234	<b>D</b>	TDZE 177
----------	----------	----------



Procedure NA for arrivals on BTW VORTAC airway radials 311 CW 014.

Procedure NA for arrivals at LEAFY on V489 southbound.



CATEGORY	A	B	C	D
LPV DA		427-½	250 (200-½)	
LNAV/VNAV DA		434-½	257 (200-½)	
LNAV MDA	700-½	523 (500-½)	700-1	523 (500-1)
CIRCLING	720-1	740-1	800-1½	960-2¼
	486 (600-1)	506 (600-1)	566 (700-1½)	726 (800-2¼)

NE-2, 11 JUL 2024 to 08 AUG 2024

NE-2, 11 JUL 2024 to 08 AUG 2024