

RNAV (GPS) RWY 23

WAAS Chan 92556 W23A	APCH CRS 233°	Rwy Idg TDZE 24 Arprt Elev 26	5125
--	-------------------------	---	-------------

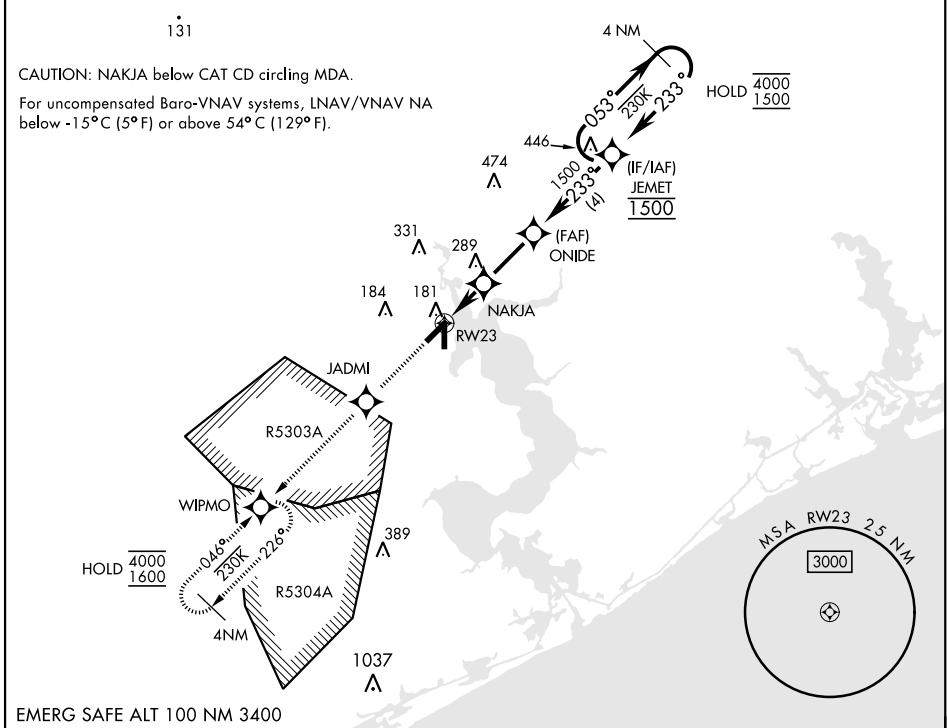
[USN]

NEW RIVER MCAS (MC CUTCHEON FLD) (KNCA)

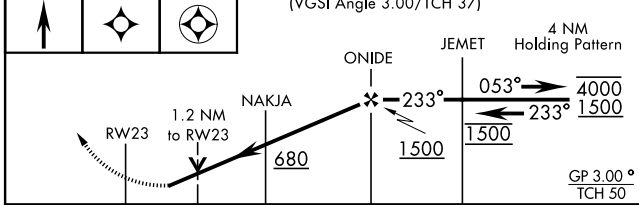
RNP APCH
RADAR required

MISSED APPROACH: Climb to 1600 direct JADMI, track 233° to WIPMO and hold.

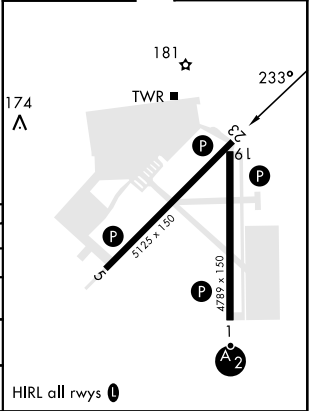
ATIS ★ 288.325	CHERRY POINT APP CON 119.35 377.175	TOWER ★ 134.95(CTAF) 0★ 360.2	GND CON 121.8 254.275	CLNC DEL 269.25	ASR/PAR
--------------------------	---	---	---------------------------------	---------------------------	---------



EMERG SAFE ALT 100 NM 3400



↑ 1600	JADMI	WIPMO	VGSIs and descent angles not coincident (VGSIs Angle 3.00/TCH 37)						
CATEGORY		A		B		C		D	
LPV DA		224- ³ / ₄		200		(200- ³ / ₄)			
LNAV/VNAV DA		312- ⁷ / ₈ 288 (300- ⁷ / ₈)		323- ⁷ / ₈ 299 (300- ⁷ / ₈)		331- ⁷ / ₈ 307 (400- ⁷ / ₈)		342- ⁷ / ₈ 318 (400- ⁷ / ₈)	
LNAV MDA		440-1 416 (500-1)		440-1 ¹ / ₈ 416 (500-1 ¹ / ₈)					
CIRCLING		500-1 474 (500-1)		700-2 674 (700-2)		700-2 ¹ / ₄ 674 (700-2 ¹ / ₄)			



SE-2, 11 JUL 2024 to 08 AUG 2024

SE-2, 11 JUL 2024 to 08 AUG 2024

RNAV (GPS) RWY 23