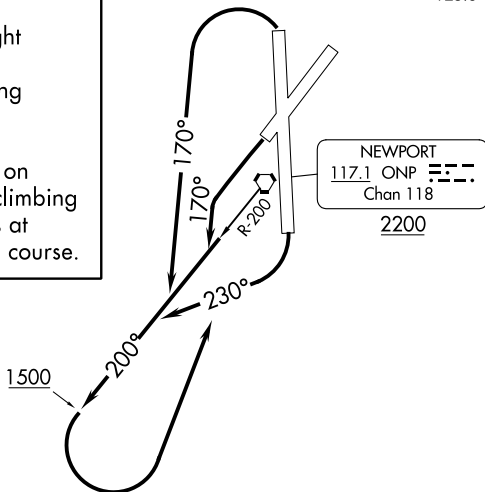


DEPARTURE ROUTE DESCRIPTION

TAKEOFF RUNWAY 16: Climbing right turn heading 230°, thence. . . .

TAKEOFF RUNWAYS 20, 34: Climbing left turn heading 170°, thence. . . .

. . . . Intercept and proceed outbound on ONP VORTAC R-200 to 1500, then climbing left turn direct ONP VORTAC to cross at or above 2200 before proceeding on course.



NOTE: Chart not to scale.

TAKEOFF MINIMUMS

Rwy 2: NA-Obstacles.

Rwy 16: 500-2¾ or standard with minimum climb of 265' per NM to 800.

Rwys 20, 34: Standard.

TAKEOFF OBSTACLE NOTES

Rwy 16: Tree and terrain beginning 82' from DER, 87' left of centerline, up to 213' MSL. Tree and building beginning 137' from DER, 261' right of centerline, up to 171' MSL. Trees beginning 783' from DER, 370' right of centerline, up to 238' MSL. Trees beginning 1262' from DER, 66' right of centerline, up to 253' MSL. Tree and terrain beginning 1476' from DER, 786' left of centerline, up to 220' MSL. Trees beginning 1750' from DER, 931' left of centerline, up to 239' MSL. Trees beginning 1786' from DER, 247' right of centerline, up to 256' MSL. Trees beginning 2062' from DER, 41' left of centerline, up to 259' MSL. Trees beginning 2145' from DER, 109' right of centerline, up to 267' MSL. Trees beginning 2309' from DER, 172' right of centerline, up to 273' MSL. Trees beginning 2402' from DER, 717' right of centerline, up to 282' MSL. Trees beginning 3840' from DER, 434' left of centerline, up to 262' MSL. Trees beginning 1.2 NM from DER, 2098' left of centerline, up to 386' MSL. Tower and trees beginning 1.3 NM from DER, 1398' left of centerline, up to 152' AGL/422' MSL. Tree 1.5 NM from DER, 2974' left of centerline, 426' MSL. Trees beginning 1.7 NM from DER, 3260' left of centerline, up to 465' MSL. Trees beginning 2.1 NM from DER, 3602' left of centerline, up to 539' MSL. Trees, transmission line tower and pole beginning 2.2 NM from DER, 3464' left of centerline, up to 584' MSL.

Rwy 20: General utility 5' from DER, 80' left of centerline, 1' AGL/132' MSL. Building 312' from DER, 564' right of centerline, 39' AGL/159' MSL. Tree 449' from DER, 494' right of centerline, 163' MSL. Bush 700' from DER, 491' left of centerline, 153' MSL. Tree 2822' from DER, 1160' left of centerline, 220' MSL. Tree 3043' from DER, 1197' left of centerline, 223' MSL.

Rwy 34: Tree 212' from DER, 408' left of centerline, 167' MSL. Tree 319' from DER, 524' left of centerline, 175' MSL. Trees beginning 965' from DER, 356' left of centerline, up to 189' MSL. Trees beginning 1420' from DER, 571' left of centerline, up to 196' MSL. Trees beginning 1487' from DER, 186' right of centerline, up to 209' MSL. Tree 1564' from DER, 897' left of centerline, 202' MSL. Tree 2004' from DER, 1016' right of centerline, 219' MSL. Tree 2054' from DER, 874' right of centerline, 232' MSL. Tree 2201' from DER, 934' right of centerline, 234' MSL. Trees beginning 2419' from DER, 1120' right of centerline, up to 241' MSL.