

WAAS CH 53439 W16A	APP CRS 162°	Rwy Idg TDZE 152 Apt Elev 160	5398
--	------------------------	---	-------------

RNAV (GPS) RWY 16

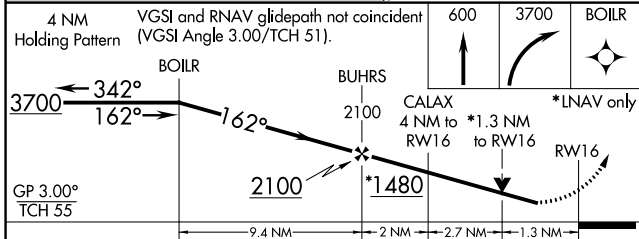
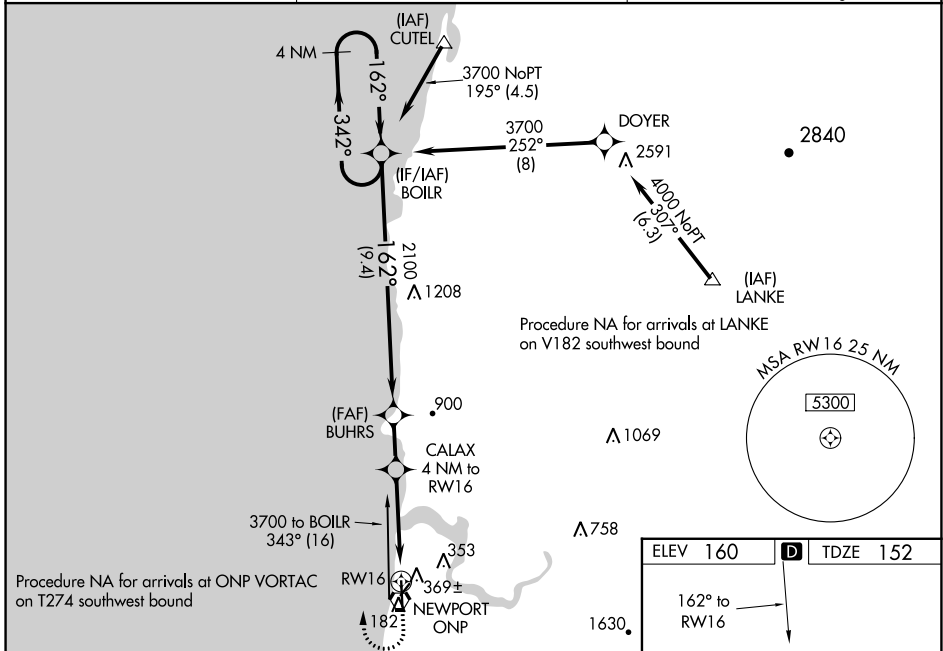
NEWPORT MUNI (ONP)

⚠ For uncompensated Baro-VNAV systems, LNAV/VNAV NA below -15°C (5°F) or above 54°C (130°F). Baro-VNAV and VDP NA when using Tillamook altimeter setting. DME/DME RNP-0.3 NA. Inop table does not apply to LPV all Cats. When local altimeter setting not received, use Tillamook altimeter setting: increase LPV DA to 537 feet and LNAV/VNAV DA to 748 feet and all MDA 140 feet; increase LNAV/VNAV all Cats visibility and LNAV Cat C/D visibility 3/8 mile and increase Circling Cat B visibility 1/4 mile. For inop MALSRL, increase LNAV/VNAV all Cats visibility to 1 1/2 mile, and increase LNAV Cat A/B visibility to 1 mile, Cat C/D to 1 3/8 mile. For inop MALSRL when using Tillamook altimeter setting, increase LPV all Cats visibility to 1 1/4 mile, and LNAV Cat A/B visibility to 1 mile, LNAV Cat C/D to 1 3/4 mile. Rwy 16 helicopter visibility reduction below 3/4 SM NA.

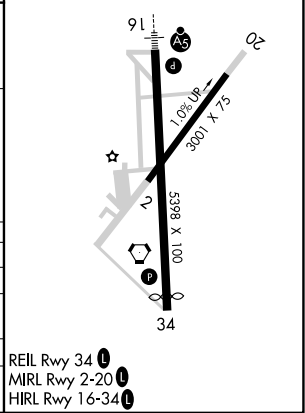
MALSRL

MISSED APPROACH:
Climb to 600 then climbing right turn to 3700 direct BOILR and hold.

AWOS-3 133.9	SEATTLE CENTER 125.8 291.7	UNICOM 122.8 (CTAF) 0
------------------------	--------------------------------------	---------------------------------



ELEV 160	D	TDZE 152
----------	----------	----------



CATEGORY	A	B	C	D
LPV DA		402-3/4	250 (300-3/4)	
LNAV/VNAV DA		613-1 1/8	461 (500-1 1/8)	
LNAV MDA	620-3/4	468 (500-3/4)	620-1	468 (500-1)
C CIRCLING	880-1 720 (800-1)	1000-1 1/4 840 (900-1 1/4)	1400-3 1240 (1300-3)	1600-3 1440 (1500-3)

REIL Rwy 34 **0**
MIRL Rwy 2-20 **0**
HIRL Rwy 16-34 **0**

NW-1, 11 JUL 2024 to 08 AUG 2024

NW-1, 11 JUL 2024 to 08 AUG 2024