

OKLAHOMA CITY, OKLAHOMA

AL-739 (FAA)

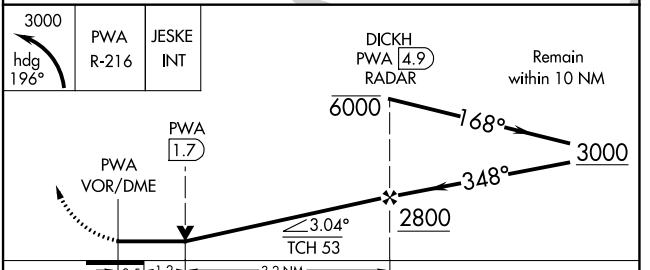
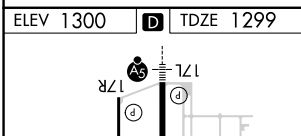
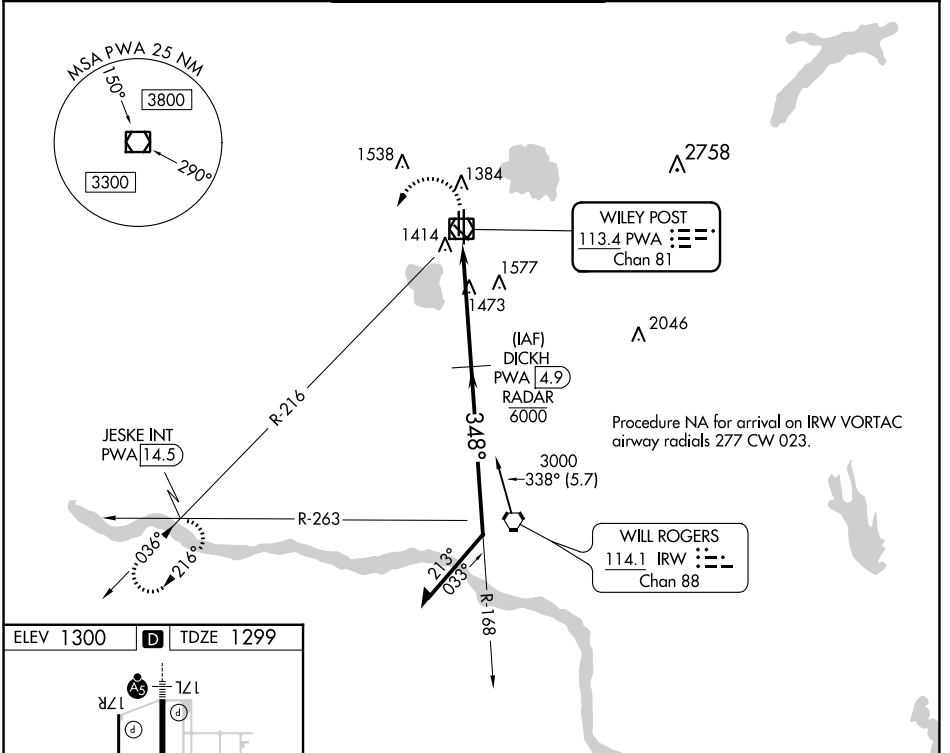
22251

VOR/DME PWA 113.4 Chan 81	APP CRS 348°	Rwy Idg TDZE Apt Elev	6843 1299 1300
---	------------------------	-----------------------------	---

VOR RWY 35R

WILEY POST (PWA)

DME or RADAR required.		MALSR 	MISSED APPROACH: Climbing left turn to 3000 on heading 196° and PWA R-216 to JESKE INT/PWA 14.5 DME and hold.	
ATIS 128.725	OKE CITY APP CON 124.6 266.8	WILEY POST TOWER ★ 126.9 (CTAF) 306.9	GND CON 121.7	UNICOM 122.95



CATEGORY	A	B	C	D
S-35R	1740-½ 441 (500-½)		1740-⅞ 441 (500-⅞)	
C CIRCLING	1780-1 480 (500-1)		1880-1½ 580 (600-1½)	1880-2 580 (600-2)

REIL Rwy 17R and 35L
MIRL Rwy 13-31 and 17R-35L
HIRL Rwy 17L-35R
348° to VOR/DME

OKLAHOMA CITY, OKLAHOMA
Amdt 4 24MAR22

35°32'N-97°39'W

WILEY POST (PWA)

VOR RWY 35R

SC-1, 11 JUL 2024 to 08 AUG 2024

SC-1, 11 JUL 2024 to 08 AUG 2024