

LOC/DME I-RBD 110.75 Chan 44 (Y)	APP CRS 309°	Rwy Idg TDZE Apt Elev 6601 660 661
--	------------------------	--

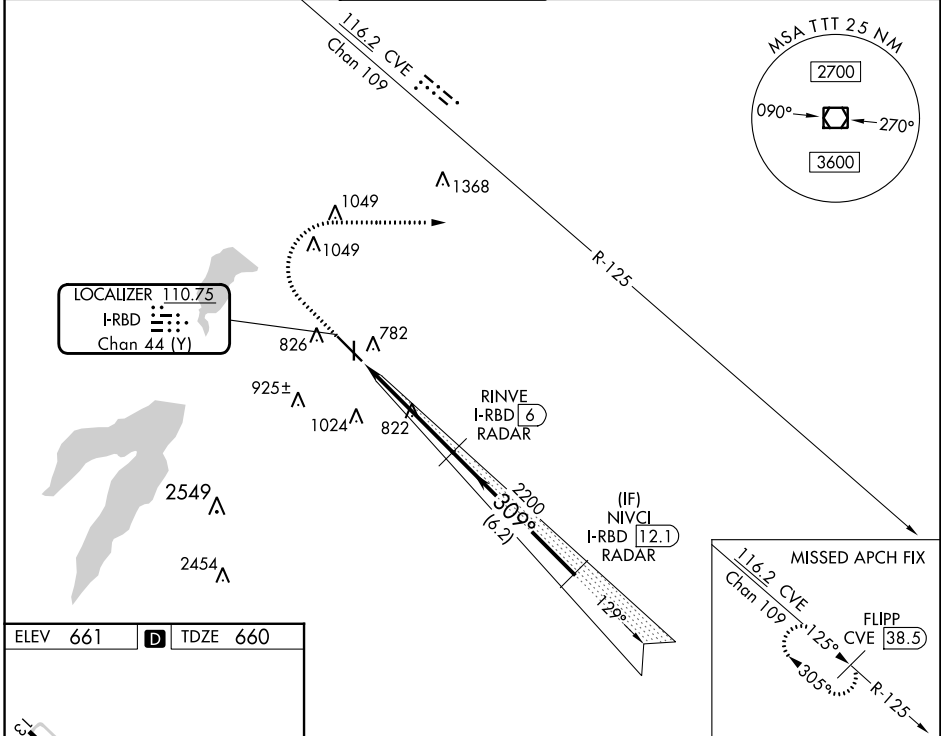
ILS or LOC RWY 31

DALLAS EXEC (R.B.D)

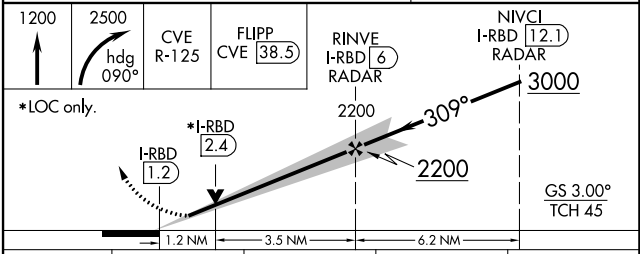
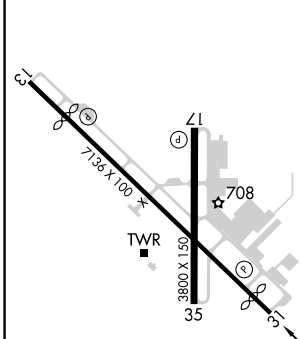
RADAR required for procedure entry,
DME or RADAR required for LOC only.

MISSED APPROACH: Climb to 2500 then climbing
right turn to 2500 on heading 090° and CVE
VOR/DME R-125 to FLIPP/CVE 38.5 DME and hold.

ATIS 126.35	REGIONAL APP CON 125.2 343.65	EXECUTIVE TOWER* 127.25 (CTAF) 0	GND CON 119.475	CLNC DEL 118.625	UNICOM 122.95
-----------------------	---	---	---------------------------	----------------------------	-------------------------



ELEV 661	D	TDZE 660
----------	----------	----------



REIL Rwy 13, 17, 31 and 35 MIRL Rwy 13-31 and 17-35 0 FAF to MAP 4.7 NM	CATEGORY			
S-ILS 31	860-3/4		200 (200-3/4)	
S-LOC 31	1080-1 420 (500-1)		1080-1 1/8 420 (500-1 1/8)	
C CIRCLING	1160-1 499 (500-1)	1220-1 559 (600-1)	1340-2 679 (700-2)	1400-2 1/4 739 (800-2 1/4)

SC-2, 11 JUL 2024 to 08 AUG 2024

SC-2, 11 JUL 2024 to 08 AUG 2024